

ESSENTIAL
WALLPAPER
COLLECTION
2023

ESSENTIAL
WALLPAPER
COLLECTION
2023

*Essenziale, come il suo nome.
Materica, tridimensionale,
elegantissima.
Da toccare con gli occhi e
ascoltare con le mani.*

*Essential Wallpaper Collection
è un universo di astrattismi e
geometrie viniliche che
esaltano il potere sensoriale di
incisioni, intarsi, goffrature.
Trame in 3D, progressioni in
bassorilievo, texture ispirate
alla natura o a sapienti
tradizioni giapponesi si
evolvono in superfici verticali
scolpite, che aprono orizzonti
inesplorati alla decorazione di
interni.*

*Le visioni dei designer si
materializzano nel saper fare di
artigiani maestri della stampa,
della stuccatura, dell'incisione
a mano. Sottili cromie ton sur
ton e nuance iridescenti si
accompagnano allo splendore
dei metalli e all'assolutismo dei
bianchi e dei neri.*

*La sottrazione aggiunge.
Dettagli minimi si amplificano
all'infinito. Dalle profondità dei
rilievi esce la luce. Less is
more, anche sui muri.*

*Essential, like its name.
Textured, three-dimensional,
elegant.
To be touched by the eyes and
listened to by the hands.*

*Essential Wallpaper Collection is
a universe of abstractions and
vinyl geometries that enhance
the sensorial power of
engravings, inlays and
embossing. 3D textures, bas-
relief progressions and textures
inspired by nature or skilful
Japanese traditions evolve into
sculpted vertical surfaces that
open up unexplored horizons for
interior decoration.*

*The designers' visions
materialise in the know-how of
craftsmen who are masters of
printing, plastering and hand
engraving. Sober tone on tone
and iridescent nuances are
accompanied by the splendour of
metals and the absolutism of
whites and blacks.*

*Subtraction adds.
Minimal details are amplified to
infinity.
Light emerges from the depths of
reliefs.
Less is more, even on walls.*

Designers p. 118

Samples p. 120

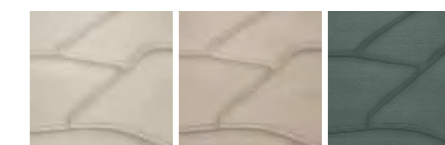
EWC 2023

p. 08 sample p. 121

SALINA

design Zanellato/Bortotto

23110EWC / 23120EWC / 23130EWC

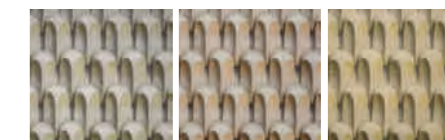


p. 14 sample p. 125

FUKURO

design Studiopepe

23310EWC / 23320EWC / 23330EWC

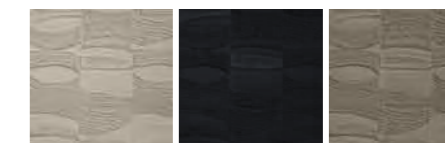


p. 20 sample p. 129

LIMO

design Zanellato/Bortotto

23210EWC / 23220EWC / 23230EWC



p. 26 sample p. 133

HOSHI

design Studiopepe

23410EWC / 23420EWC / 23430EWC

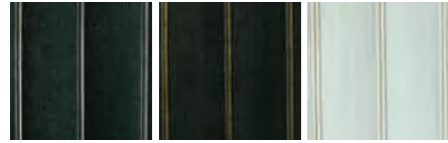


EWC
2021

p. 34 sample p. 137

YOKU

design Christian Benini
20510EWC / 20520EWC / 20530EWC



p. 38 sample p. 141

ASHI

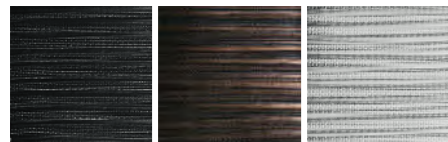
design Studiopepe
20110EWC / 20120EWC / 20130EWC



p. 42 sample p. 145

KOMOREBI

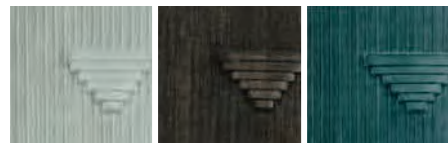
design Christian Benini
20410EWC / 20420EWC / 20430EWC



p. 46 sample p. 149

HA

design Studiopepe
20310EWC / 20320EWC / 20330EWC



p. 50 sample p. 153

HIKARI

design Studiopepe
20210EWC / 20220EWC / 20230EWC



EWC
2019

p. 56 sample p. 157

ASAMI

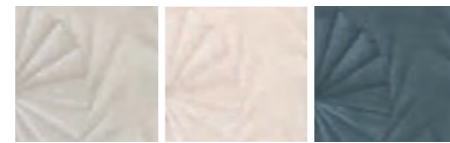
design Studiopepe
19210EWC / 19220EWC / 19230EWC



p. 60 sample p. 161

HARU

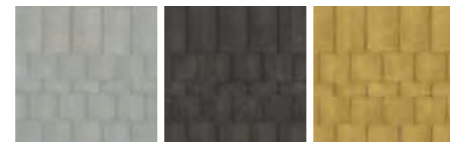
design Studiopepe
19310EWC / 19320EWC / 19330EWC



p. 64 sample p. 165

NORI

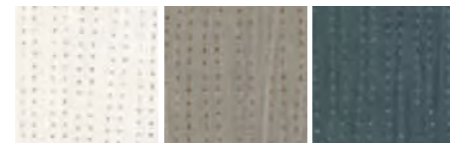
design Studiopepe
19110EWC / 19120EWC / 19130EWC



p. 68 sample p. 169

VAGO RELOADED

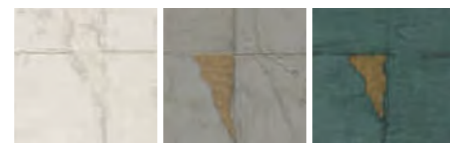
design Christian Benini
17140EWC / 17150EWC / 17160EWC



p. 72 sample p. 173

KINTSU RELOADED

design Christian Benini
17240EWC / 17250EWC / 17260EWC

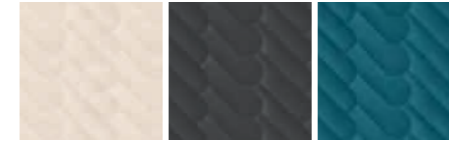


EWC
2018

p. 78 sample p. 177

KAZE

design Studiopepe
18210EWC / 18220EWC / 18230EWC



p. 82 sample p. 181

ZIP

design Christian Benini
18410EWC / 18420EWC / 18430EWC



p. 86 sample p. 185

RENN

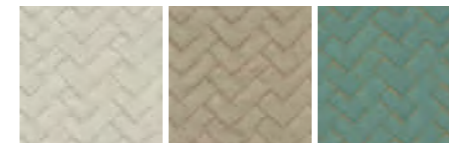
design André Fu
18510EWC / 18520EWC / 18530EWC



p. 90 sample p. 189

YUMI

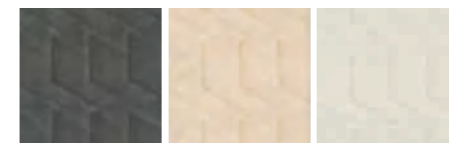
design Studiopepe
18310EWC / 18320EWC / 18330EWC



p. 94 sample p. 193

NAMI

design Studiopepe
18110EWC / 18120EWC / 18130EWC



EWC
2017

p. 100 sample p. 197

VAGO

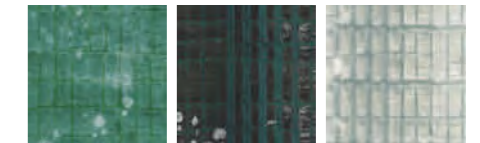
design Christian Benini
17110EWC / 17120EWC / 17130EWC



p. 104 sample p. 201

ALYA

design Christian Benini
17310EWC / 17320EWC / 17330EWC



p. 108 sample p. 205

KINTSU

design Christian Benini
17210EWC / 17220EWC / 17230EWC



p. 112 sample p. 209

DEEP

design Christian Benini
17410EWC / 17420EWC / 17430EWC



EWC TWENTYTWENTYTHREE

Le saline di Cervia, l'antico origami, i gufi dagli occhi luminosi: arte e natura definiscono le nuove ispirazioni. Vuoti e pieni, solchi e incisioni, geometrie primordiali restituiscono la potenza espressiva di un paesaggio del cuore, di un animale misterioso, di una tradizione antica.

The salt pans of Cervia, ancient origami, bright-eyed owls: art and nature outline new inspirations. Voids and solids, furrows and incisions, primordial geometries restore the expressive power of a landscape of the heart, of a mysterious animal, of an ancient tradition.



EWC 2023

SALINA

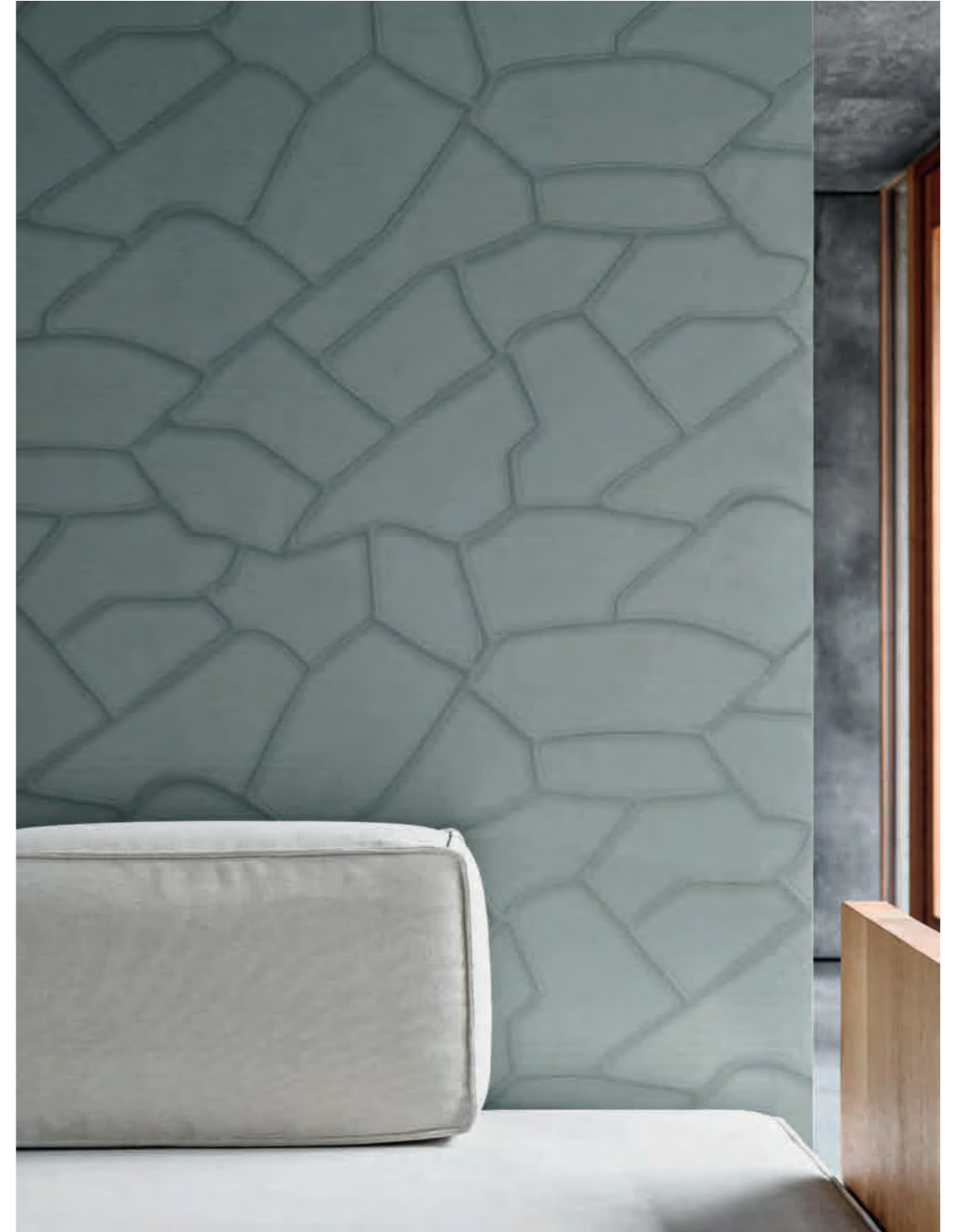
23110EWC
design
Zanellato/Bortotto



23110EWC



23120EWC



23130EWC



EWC 2023

FUKURO

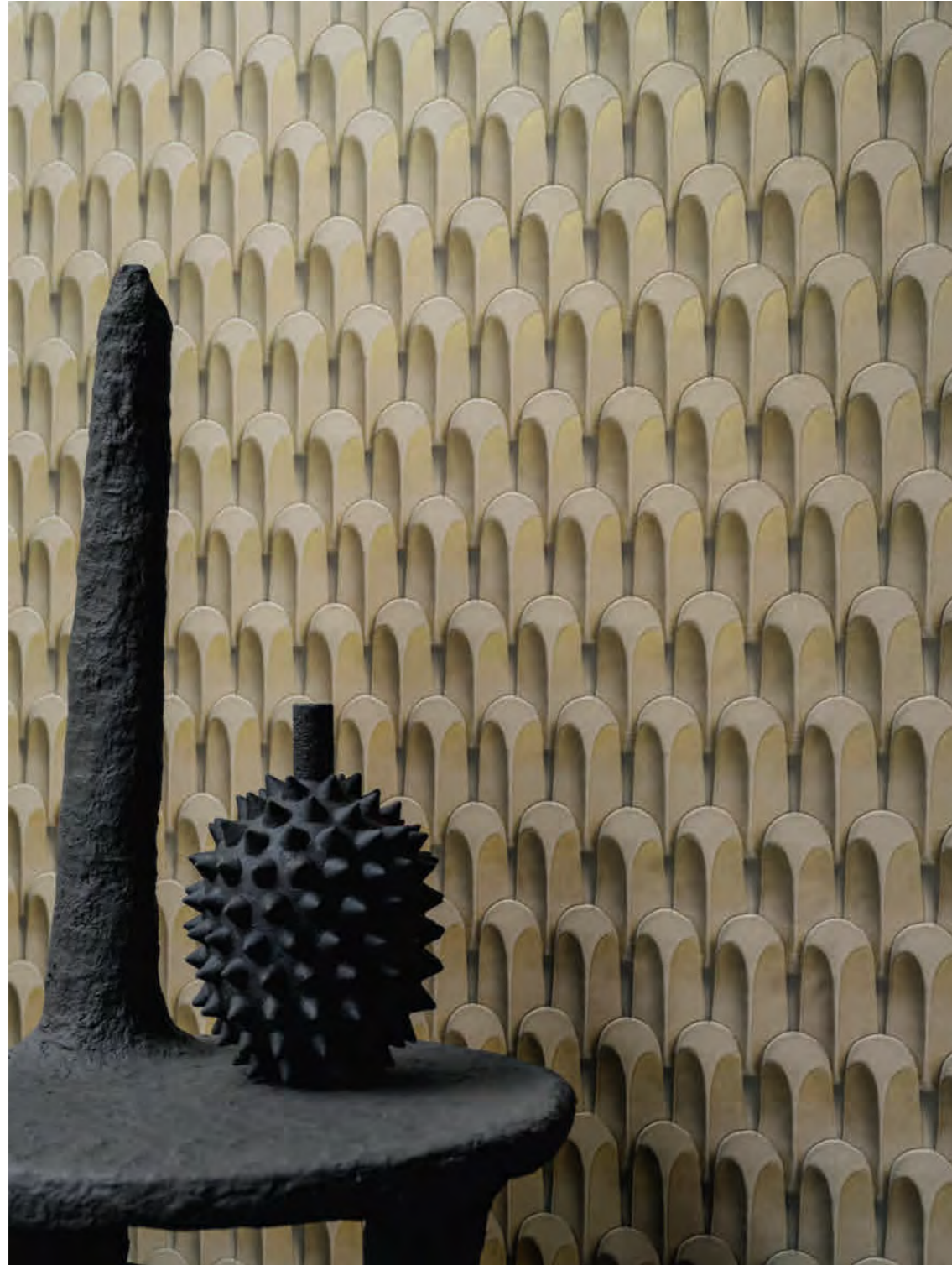
23330EWC
design
Studiopepe



23310EWC



23320EWC



23330EWC







23210EWC



23220EWC



23230EWC





23410EWC



23420EWC



23430EWC

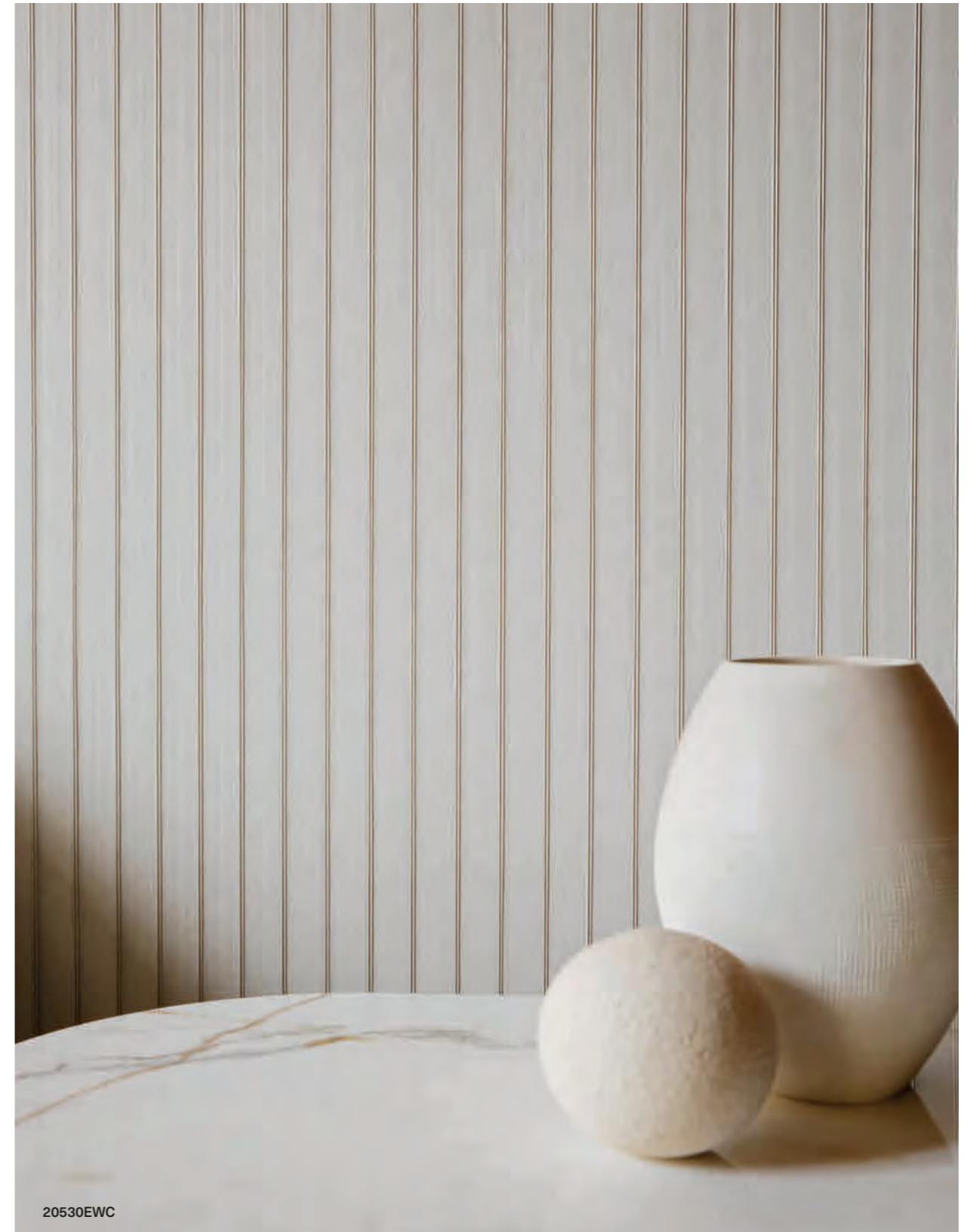


*Un intreccio di paglia,
la trama di una foglia o
di una corteccia, la texture
della pelle di un animale si
trasfigurano con eleganza.
Filo conduttore: una ricerca
che esplora la natura e ne
coglie l'essenza, ispirandosi
alla tradizione giapponese
della piegatura della carta.*

*A weave of straw, the
pattern of a leaf or a bark,
the texture of an animal
skin are elegantly
transfigured. The common
thread: an exploration of
nature to capture its
essence, inspired by the
Japanese tradition of
paper folding.*

2021
COLLECTION









20110EWC



20120EWC

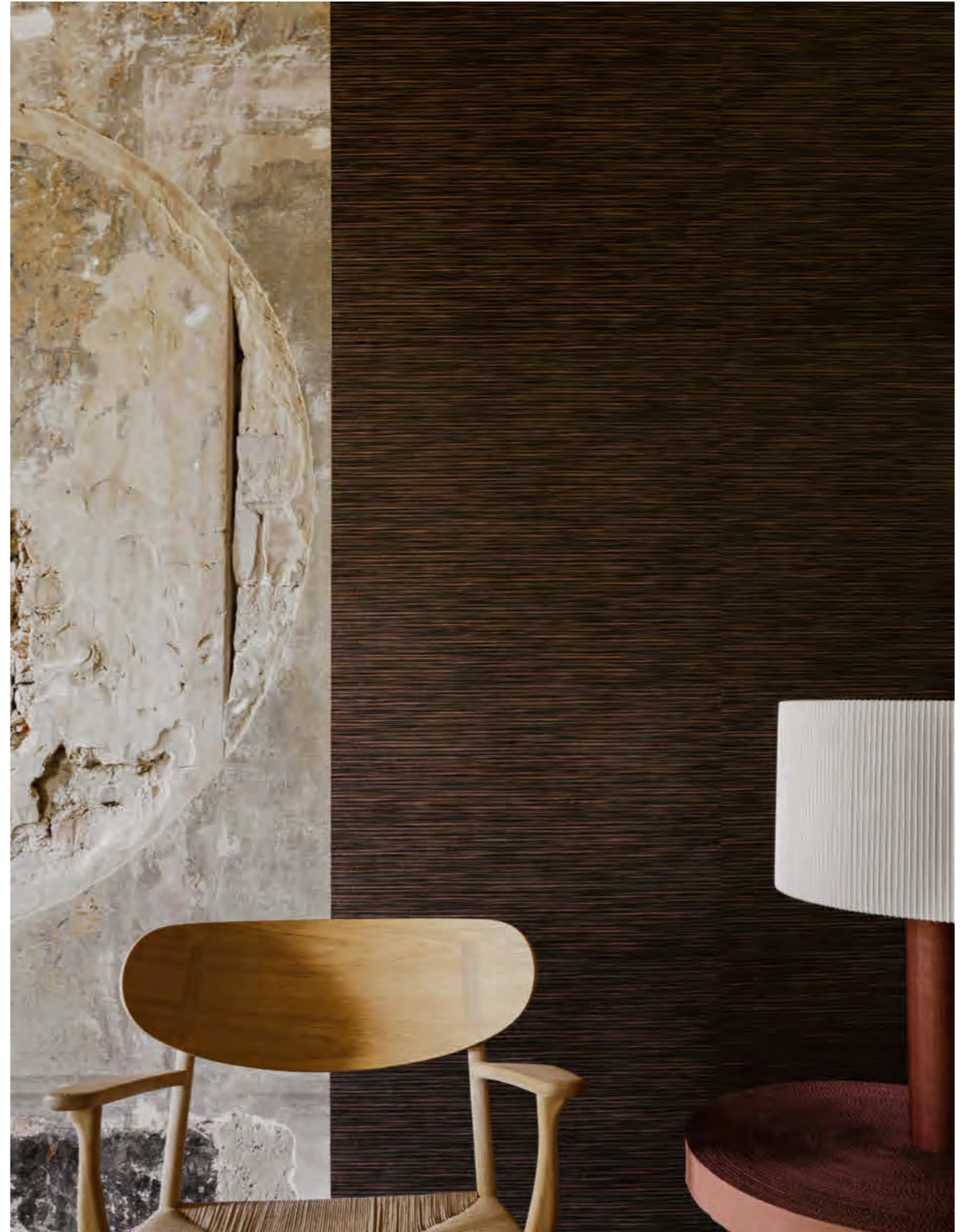
20110EWC

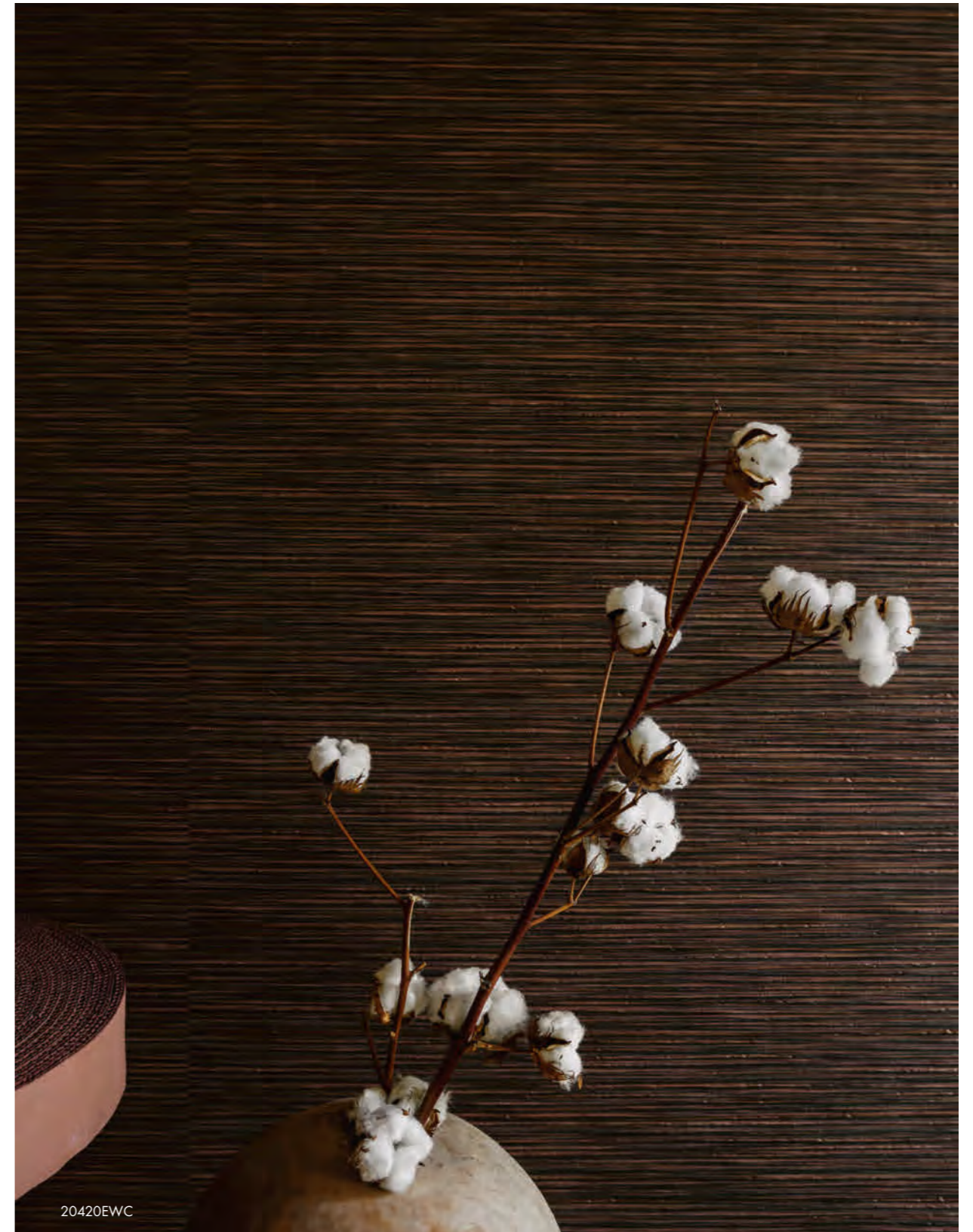
20130EWC

KOMOREBI

20420EWC
design
Christian Benini

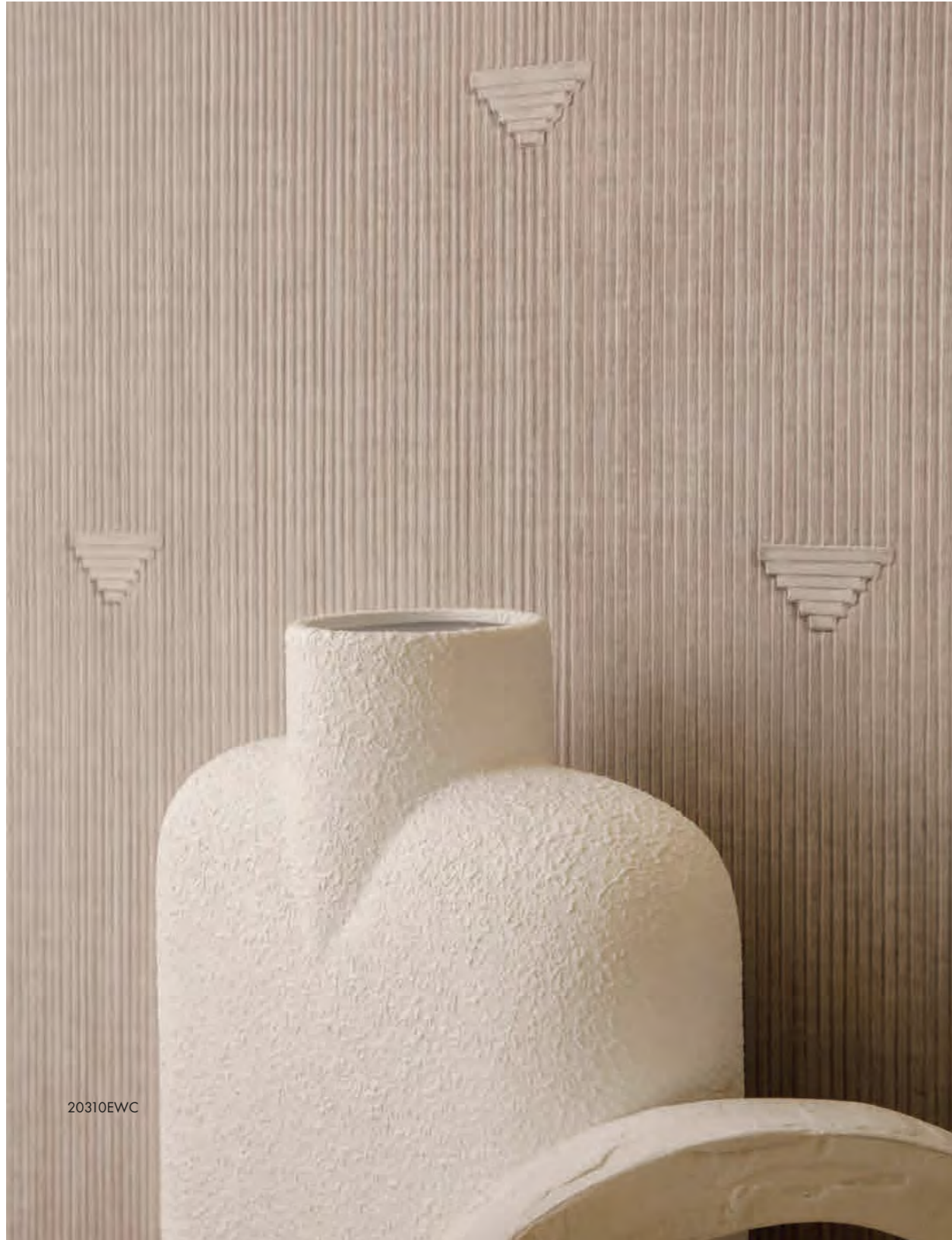
EWC 2021





20420EWC

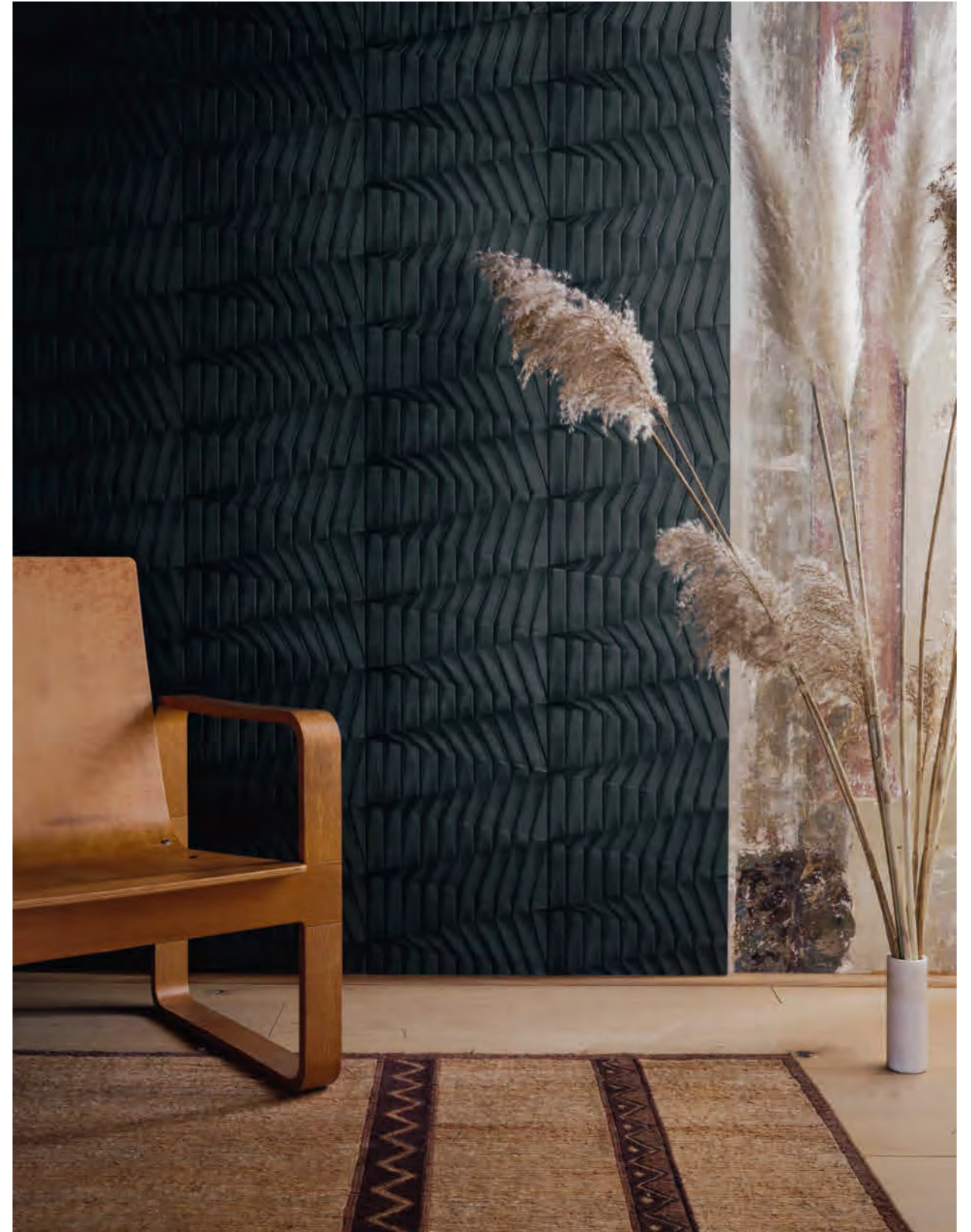




HIKARI

20230EWC
design
Studiopepe

EWC 2021





2019

COLLECTION

Archetipi geometrici, riferimenti deco e rivisitazioni di colte tradizioni nipponiche si impreziosiscono di cangianze metalliche e sofisticate. La luce scivola dentro gli intarsi e sui rilievi, percorrendo la materia con tridimensionalità e chiaroscuri sempre nuovi.

Geometric archetypes, deco references and reinterpretations of cultured Japanese traditions are embellished with metallic and sophisticated iridescence. Light slips into the inlays and onto the reliefs, running through the material with ever new three-dimensionality and chiaroscuro effects.



19220EWC



19230EWC



19310EWC

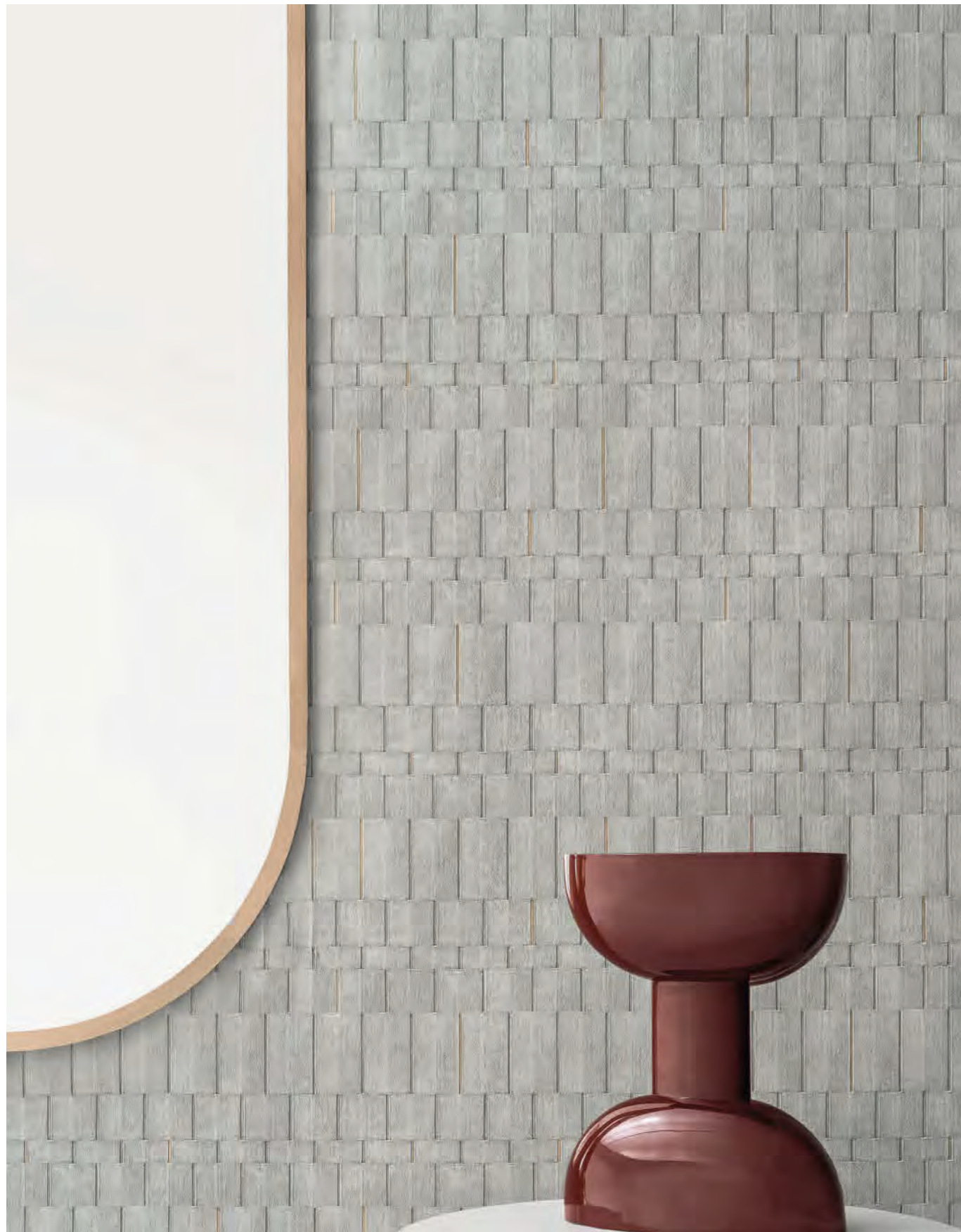


19330EWC

NORI
19130EWC
design
Studiopepe

EWC 2019





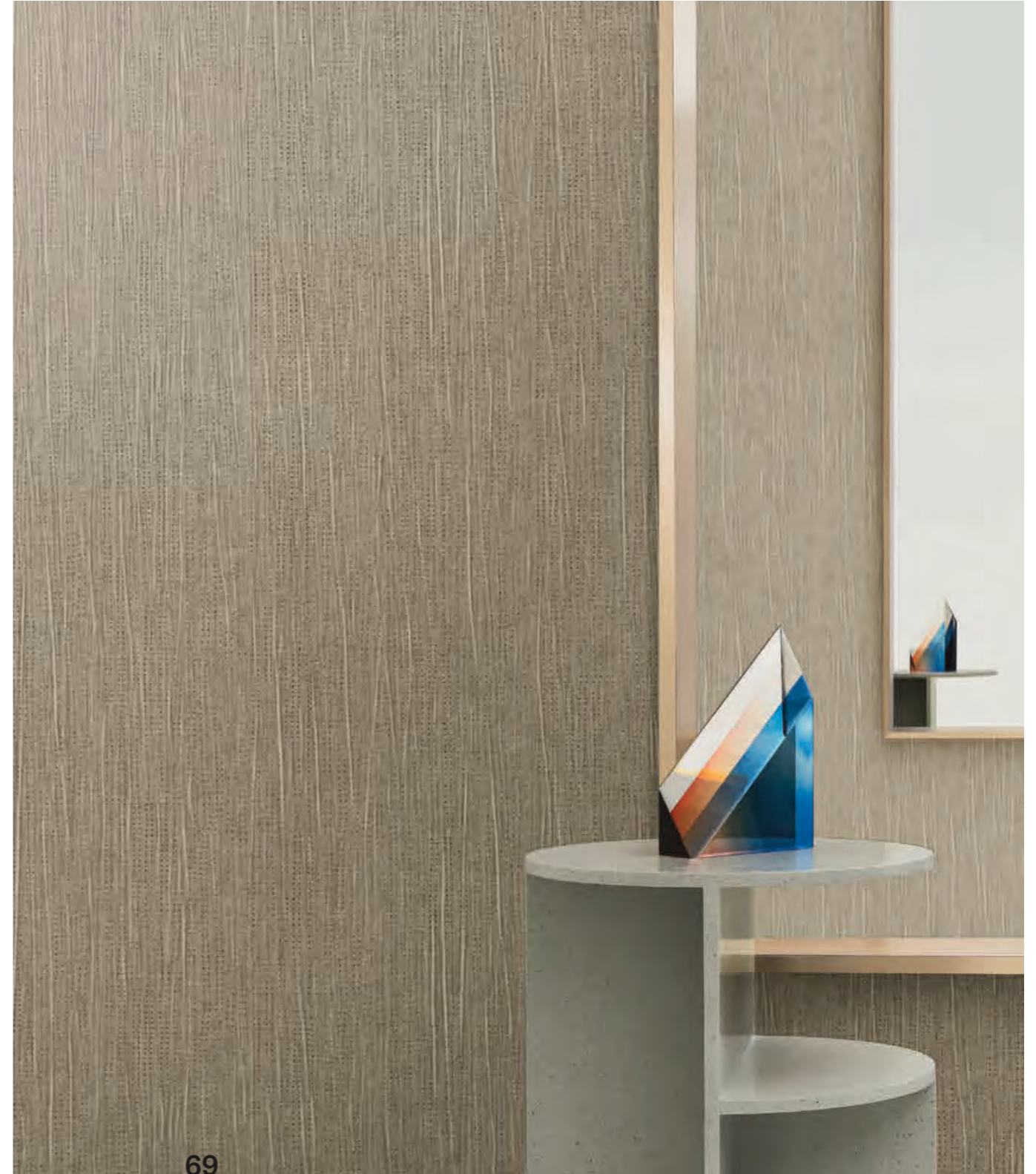
19110EWC



19120EWC

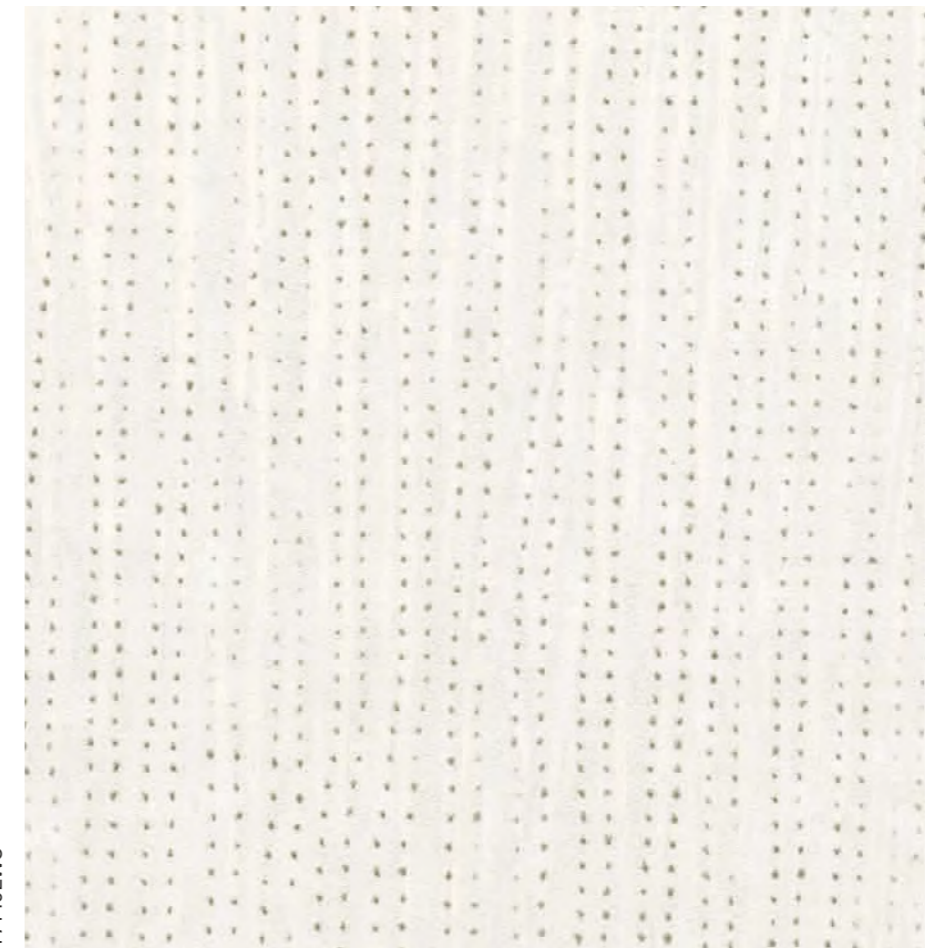
VAGO
RELOADED
17150EWC
design
Christian Benini

EWC 2019





17160EWC



17140EWC

**KINTSU
RELOADED**

17250EWC
design
Christian Benini

EWC 2019





17260EWC

17240EWC



∟0¹8
COLLECTION

*Nuovi designer, nuove visioni,
nuove idee esaltano
essenzialità e matericità della
collezione. Lamelle e pieghe
di antichi origami, cerniere
d'oro, cannottati dalle nuance
naturali aprono orizzonti
inediti sulle pareti,
celebrando la Forma...
in ogni sua forma.*

*New designers, new visions
and new ideas enhance the
essentiality and materiality of
the collection. Lamellas and
folds of ancient origami,
golden zips, ribbed in natural
shades open up new
horizons on the walls,
celebrating Shape...
in all its shapes.*





18230EWC

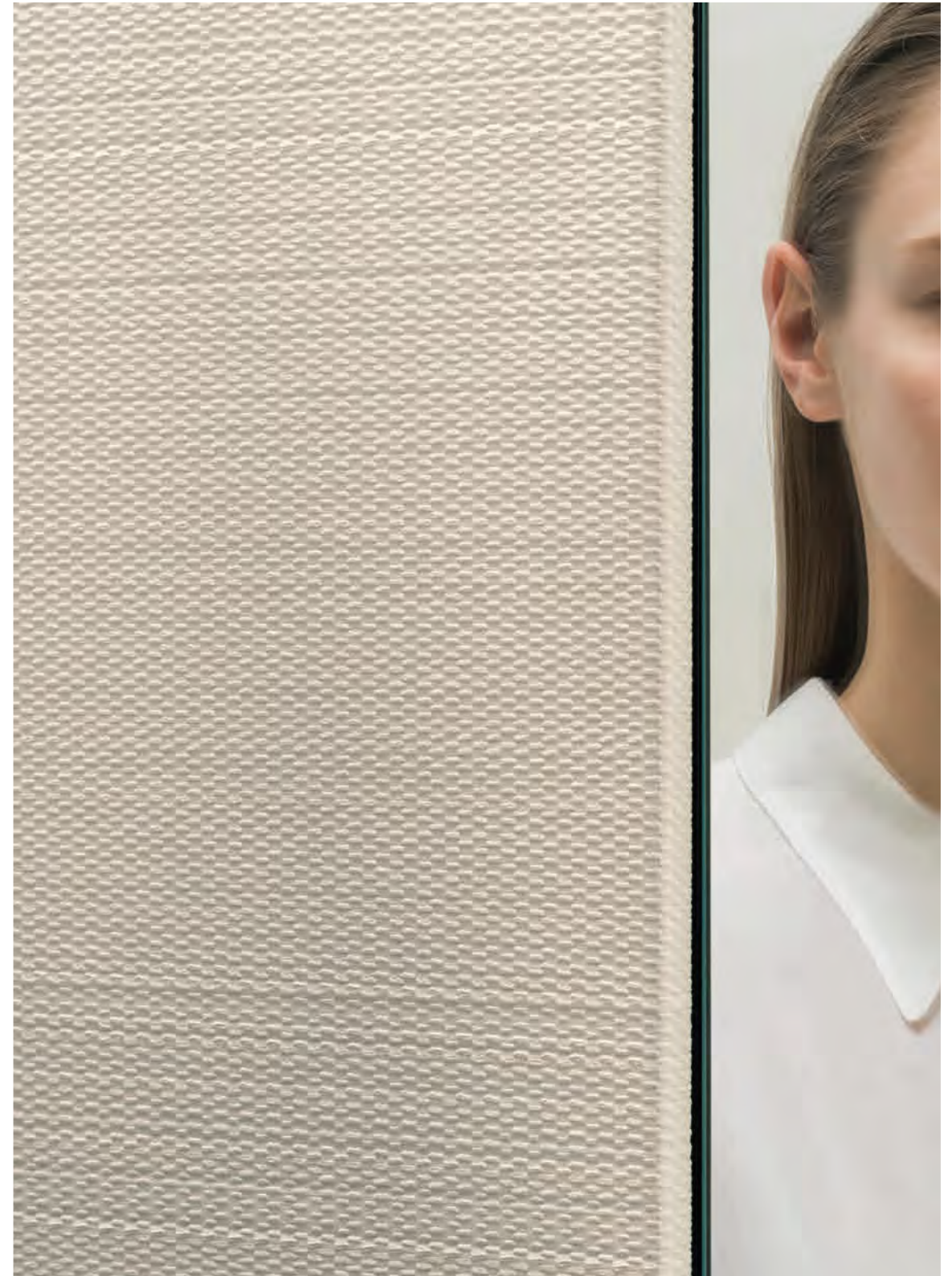


18220EWC





18430EWC



18410EWC

RENN

18530EWC
design
André Fu





88

EWC 2018



18510EWC

18520EWC

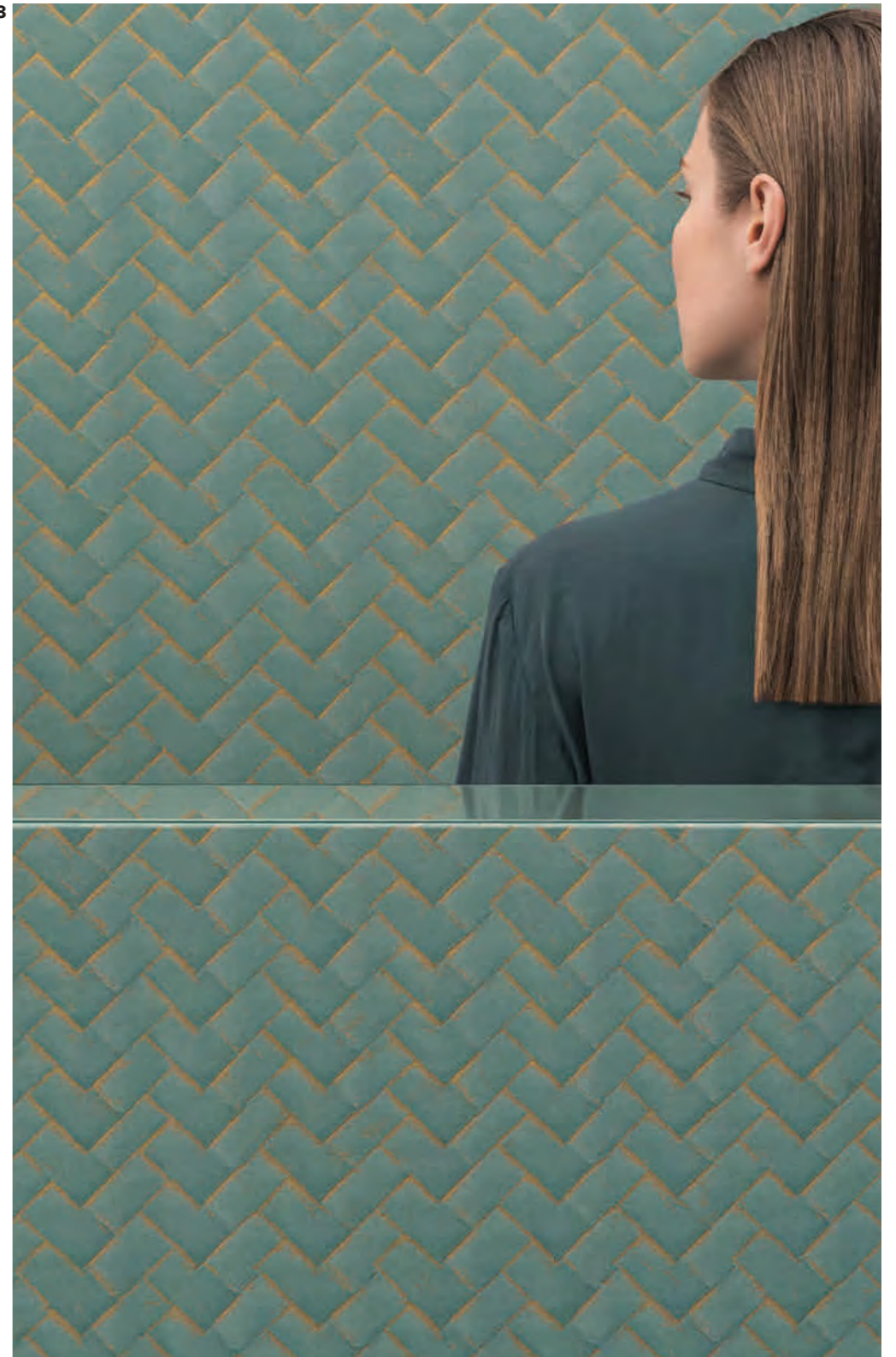
89



18320EWC



EWC 2018



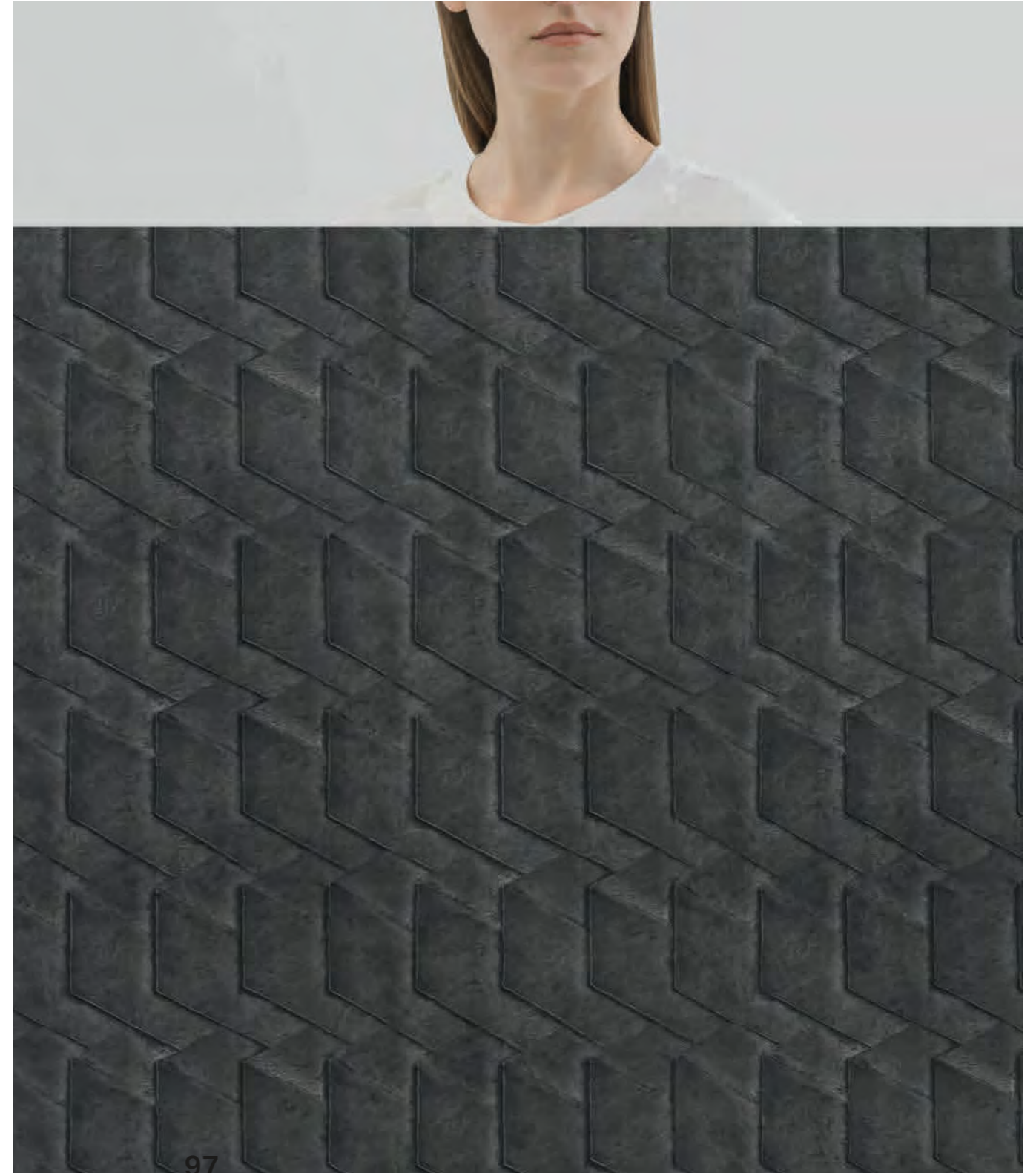
18330EWC





18130EWC

18110EWC



97

2017

COLLECTION

È l'inizio dell'indagine, sulla tridimensionalità e sui micro-segni, mai vista prima nel mondo delle carte da parati. Nascono i pattern su supporto vinilico, che vestono i muri con incisioni astratte, texture materiche, sbecature d'oro. È l'incipit, prima essenza di Essential.

For Wall&decò it is the start of an investigation into three-dimensionality and micro-signs, a search inspired by minimalism as an absolute value. Patterns on vinyl arise, embellishing walls with abstract engravings, material textures, and gold embossing. This is the incipit, the primary essence of Essential.



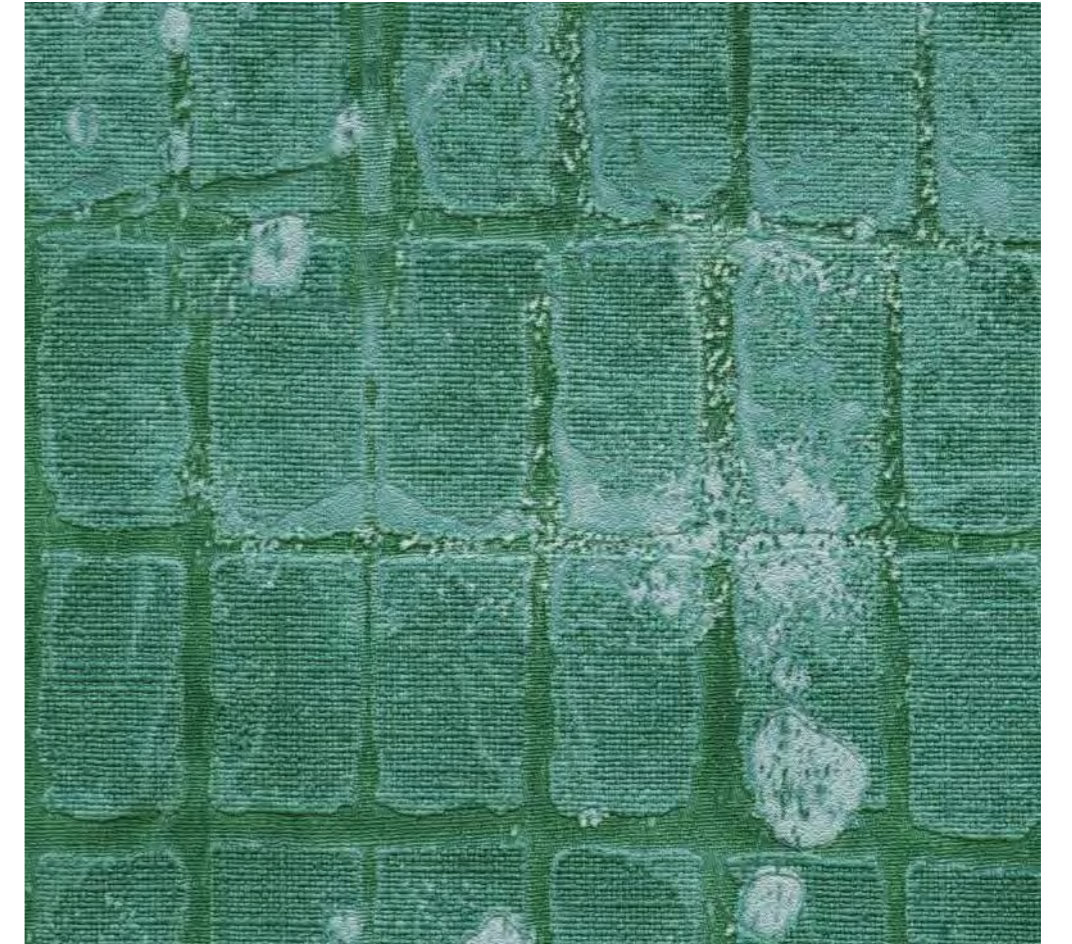


17120EWC

17130EWC







KINTSU

17220EWC
design
Christian Benini

EWC 2017





17210EWC

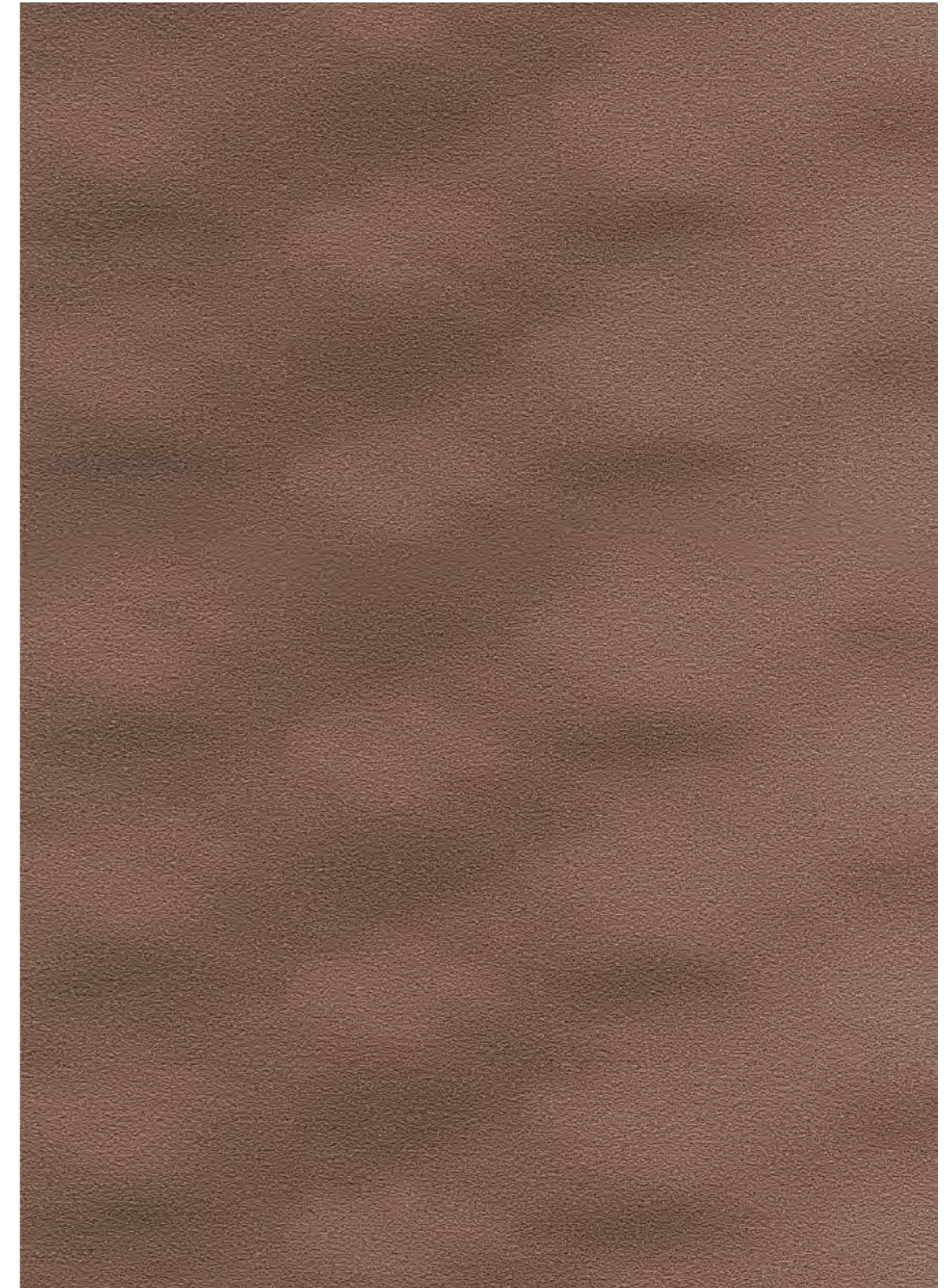






114







17420EWC



17410EWC

115

EWC - Essential Wallpaper Collection

Caratteristiche Tecniche Technical Features	Descrizione materiale Description of material	Supporto in tessuto non tessuto con strato superficiale in vinile Non-woven fabric substrate with vinyl surface layer
	Natura dei componenti Nature of components	Supporto: tessuto non tessuto, cellulosa, additivi - Spalmatura del lato decorativo: PVC Non-woven fabric, cellulose, additives, PVC coating of decorative side
	Peso totale (minimo / massimo) Total weight (minimum maximum)	380 g/m ² 420 g/m ² 600 g/m ²
	Spessore totale (minimo / massimo) Total thickness (minimum / maximum)	0,34 mm 0,40 mm 0,95 mm
Certificazioni Certifications	Reazione al fuoco Reaction to fire	Classe B s2 d0 D s3 d2
	VOC	French VOC regulation: A+
	Descrizione d'uso Description of use	Da interni , residenziale e contract (hotel, commerciale) Indoor, residential and contract (hotel, commercial)
	     	100% Resistente agli urti Impact resistant Altamente Lavabile Extra washable Superficie goffiata Embossed surface Rimovibile a secco Dry strippable Applicare la colla sul muro Paste the wall



STUDIOPEPE

Studioepe è una design agency fondata a Milano nel 2006 da Arianna Lelli Mami e Chiara Di Pinto.

Studioepe si concentra sulla progettazione e ricerca con un approccio multidisciplinare: si occupa di design (interior, product e limited edition) e di consulenza creativa (trend book, color concept, styling project).

Studioepe sviluppa concept creativi per brand di moda e design, progetta interni per privati e retail, collezioni di prodotti sia per aziende che per gallerie d'arte e design.

Il linguaggio progettuale è stratificato ed eclettico. Unisce visione poetica e rigore progettuale.

Arte, installazioni, studio degli archetipi formali, sperimentazione sulla materia e dialogo fra opposti sono alcuni dei temi sviluppati dallo Studio.

I progetti di Studioepe sono riconosciuti per la loro forte identità iconografica, basata sulla sperimentazione, sulla costante ricerca su colore e materiali e sulla contaminazione tra i diversi linguaggi del contemporaneo al fine di perseguire un risultato speciale che rispetti l'individualità di ogni cliente.

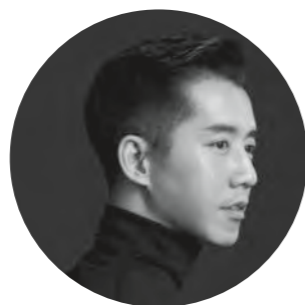
Nato a Hong Kong e con un percorso di studi in Inghilterra dall'età di 14 anni, André Fu consegue un Bachelor of Arts e un Master in Architettura entrambi presso l'Università di Cambridge.

"Vivere e viaggiare tra i due paesi è il motivo per cui la mia sensibilità reinterpreta in un nuovo ibrido le nozioni tradizionali di identità nazionale o estetica "East meets West". Si tratta di combinare un perfetto allineamento tra sensibilità culturali e di design, lusso moderno e artigianato per dare forma al mondo che ci circonda" dichiara il designer.

Fu diventa noto da un giorno all'altro quando ridefinisce le nozioni di ospitalità con il progetto Upper House Hotel di Hong Kong, e da allora continua a creare interni all'avanguardia per altri marchi leader.

"Ogni nuovo incarico inizia con la comprensione del mio cliente, del marchio, e della vision. I miei tocchi distintivi possono essere presenti, ma per me è molto importante che il design racconti una storia sul marchio".

I progetti di solito iniziano con gli schizzi concettuali disegnati a mano da Fu, dando forma a una sensuale fusione di forma e materialità, prima di passare a una fase di progettazione dettagliata. La stessa attenzione personale ai dettagli durante tutto il processo di progettazione caratterizza anche i mobili su misura, i prodotti e l'illuminazione.



Studioepe is a design agency founded in Milan, in 2006, by Arianna Lelli Mami and Chiara Di Pinto.

Studioepe's focus is on design and research through the use of a multidisciplinary approach: this includes interior design (retail, hotels, private commissions), product design and creative consulting.

The language they use for their designs is stratified and eclectic, uniting poetic vision and rigorous design.

Art, installations, study of formal archetypes, experiments with materials and the dialogue between opposites are some of the themes developed by the Studio.

Studioepe's projects are recognizable by their strong iconographic identity, based upon experimenting, continuous research on colours and materials and the contamination between the various contemporary languages with the intent to provide a solution that is uniquely special and respectful of each client's individuality.

Born in Hong Kong and educated in England from the age of 14, André Fu holds a Bachelor of Arts at Cambridge University, and a Masters in Architecture from the University of Cambridge.

According to the designer, "living and travelling between both countries over the past thirty years is why my own tastemaker sensibility reinterprets traditional notions of national identities or 'East-meets-West aesthetics' in a new hybrid. For me, it is about combining a seamless alignment of cultural and design sensibilities, modern luxury, and craftsmanship to shape the world around us."

Fu became known overnight when he first redefined notions of hospitality with his design of Upper House hotel in Hong Kong, and has since gone on to create forward-thinking interiors for other leading brands.

"Each new commission starts with understanding my client, the brand, and their specific vision. My signature touches may be there but it is very important to me that the design is about telling a story about the brand."

Designs usually begin with Fu's hand-drawn conceptual sketches, shaping a sensuous fusion of form and materiality, before proceeding to a detailed design stage. The same personal attention to detail throughout the design process has also featured in his custom-design furniture, lighting, and products.



CHRISTIAN BENINI

Christian Benini inizia la sua carriera come fotografo ritrattista e si specializza poi nella fotografia di moda e pubblicitaria.

Le sue collaborazioni lo portano ad avvicinarsi alle agenzie di pubblicità e case di moda in Italia, Regno Unito e Stati Uniti.

Negli anni il suo interesse si indirizza in modo sempre più preciso verso la fotografia d'arredamento.

Nel 2005 l'intuizione è che lo porta a creare Wall&decò: nel riprodurre un'immagine da utilizzare come fondale per un set fotografico, ne percepisce l'alto valore decorativo e le possibili declinazioni nel mondo dell'arredo.

Da qui prende avvio una collezione di carte da parati contemporanee per interni, poi ampliata anche agli esterni e agli ambienti umidi, che ridefinisce gli stilemi della decorazione murale proponendo come alternativa ai pattern e alle geometrie ingrandimenti e macro-immagini.

Nel 2017 il percorso di ricerca si amplia ulteriormente con Essential Wallpaper Collection, la collezione dedicata ad interpretare il valore decorativo delle texture.

Un mondo alternativo rispetto ai grandi disegni narrativi, fatto di trame in 3d, intarsi, incisioni e dettagli di luce in metallo che creano dei veri e propri bassorilievi - nascono superfici da esplorare con le mani oltre che da vedere.



ZANELLATO /BORTOTTO

Nel 2013 Giorgia Zanellato e Daniele Bortotto hanno fondato a Treviso lo studio Zanellato/Bortotto.

Lo stesso anno hanno presentato al Salone Satellite di Milano il loro primo progetto, ovvero la collezione "Acqua Alta", che rende omaggio a Venezia. Questo evento ha segnato l'inizio della loro ricerca pluriennale e costante incentrata sulla relazione tra i luoghi e lo scorrere del tempo, un collegamento che analizzano tramite la reinterpretazione di tecniche artigianali tradizionali.

Tra le attività dello studio figurano design di prodotto, edizioni limitate per gallerie, direzione artistica e progetti di interior design. Lo studio collabora con aziende italiane e internazionali e i suoi lavori sono stati esposti presso numerose gallerie e istituzioni, tra cui il MAXXI di Roma, la Triennale di Milano, il Museo Poldi Pezzoli di Milano, la Somerset House e l'Aram Gallery di Londra.

Nel 2015 Elle Décor Italy ha nominato i due professionisti Young Talent of the Year e nel 2016 sono stati insigniti del premio NYXXDESIGN dalla rivista americana Interior Design e del Red Rot Design Award per il loro progetto "Storie per Cedit". Nel 2018 hanno ricevuto un Good Design Award per la sedia Bix progettata per B-line.

Christian Benini began his career as a portrait photographer and then went on to specialise in fashion and publicity photography.

He has worked in close conjunction with advertising agencies and fashion houses in Italy, the UK and the USA.

Over the years his has honed a precise interest in photography of interiors.

In 2005 his intuition inspired him to create Wall&decò: upon reproducing an image for use as a backdrop on a photography set, he perceived its remarkable decorative value, versatility and potential for use in the furnishing world.

This marked the start of a contemporary wallpaper collection for interiors which was then extended to embrace outdoor areas and damp indoor environments, redefining the stylistic elements of wall decorations by proposing blow-ups and macro-images as alternatives to patterns and geometries.

This research path was broadened even further in 2017 with the Essential Wallpaper Collection, dedicated to interpreting the sheer decorative value of textures.

An alternative world compared to large narrative designs, featuring 3D patterns, inlays, carvings and metal light details which create veritable bas-reliefs. The genesis of surfaces just waiting to be explored by hand and not just with the eyes.

In 2013 Giorgia Zanellato and Daniele Bortotto founded the Zanellato/Bortotto studio, based in Treviso.

In the same year, they presented their first project at the Salone Satellite in Milan. The collection, going by the name of "Acqua Alta", pays homage to Venice. This moment marked the beginning of their longstanding, constant research into the relationship between places and the passing of time, a connection analysed through the reinterpretation of traditional artisanal techniques.

The studio's works include product design, limited editions for galleries, art direction and interior design projects. The studio collaborates with Italian and international companies. Its works have been displayed in several galleries and institutions such as Rome's MAXXI, the Triennale Design Museum, the Poldi Pezzoli Museum in Milan, the Somerset House, and The Aram Gallery in London.

In 2015, they have been nominated by Elle Décor Italy as Young Talent of the Year. In 2016 they have been awarded the NYXXDESIGN prize for the American magazine Interior Design, as well as a Red Rot Design Award for their project "Storie per Cedit". In 2018 they have been conferred a Good Design Award for Bix chair for B-line.

SALINA

design
Zanellato/Bortotto

23110EWC



23120EWC



23130EWC



ESSENTIAL WALLPAPER

SAMPLES



EN 15102



Reaction to fire
class B - s2, d0
class D - s3, d2



Easy
Hanging



Sustainable



Strippable



Very
good



Scrubbable



Adhesive
to be applied
to the wall

SALINA

design
Zanellato/Bortotto

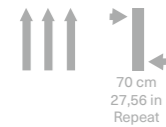
Set Images
p. 08

Roll dimensions
70 cm x 10 m // 27,56 in x 10,94 yd

Weight
600 gr / m² // 17,69 oz / yd²

Reaction to fire
class D - s3, d2

Match

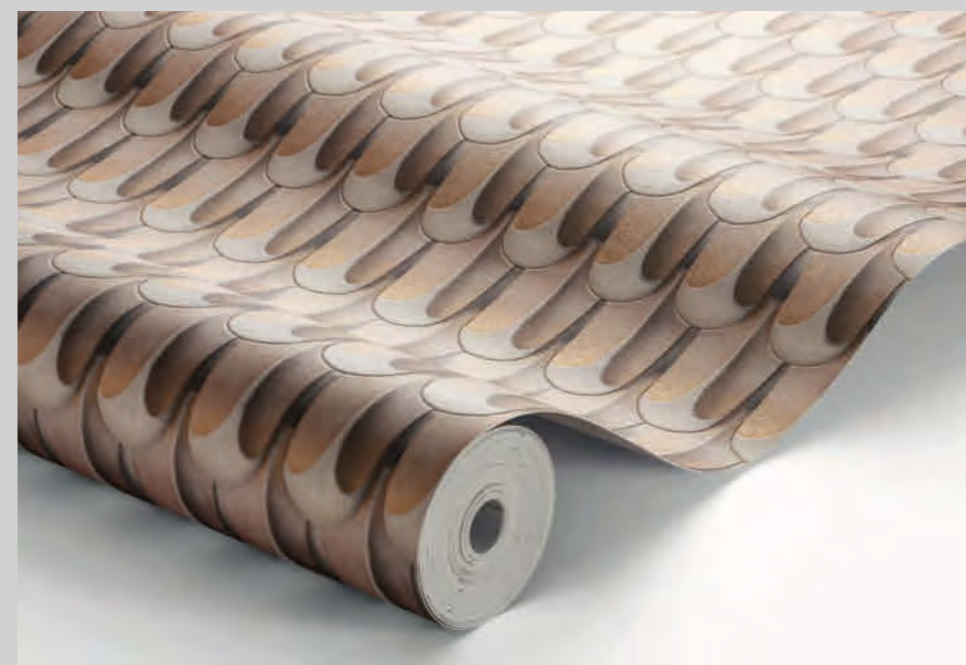
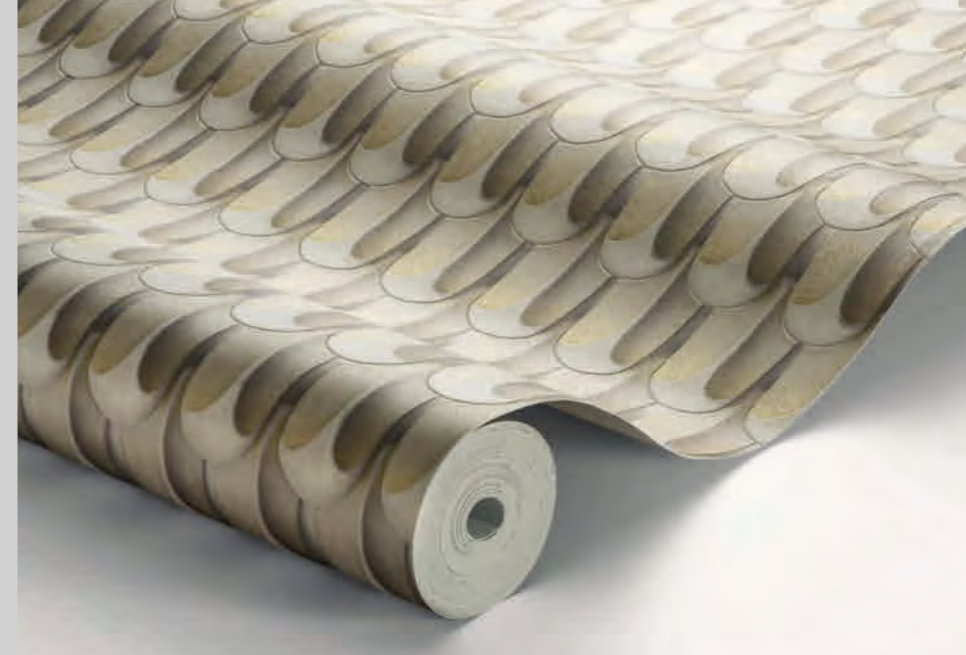


EWC

FUKURO

design
Studiopepe

23310EWC



23320EWC



23330EWC

FUKURO

design
Studiopepe

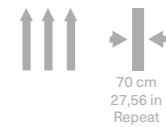
Set Images
p. 14

Roll dimensions
70 cm x 10 m // 27,56 in x 10,94 yd

Weight
600 gr / m² // 17,69 oz / yd²

Reaction to fire
class D - s3, d2

Match



LIMO

design
Zanellato/Bortotto

23210EWC



23220EWC



23230EWC

LIMO

design
Zanellato/Bortotto

Set Images
p. 20

Roll dimensions
70 cm x 10 m // 27,56 in x 10,94 yd

Weight
600 gr / m² // 17,69 oz / yd²

Reaction to fire
class D - s3, d2

Match



EWC

HOSHI

design
Studiopepe

23410EWC

23420EWC

23430EWC

HOSHI

design
Studiopepe

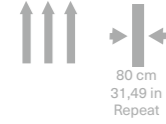
Set Images
p. 26

Roll dimensions
70 cm x 10 m // 27,56 in x 10,94 yd

Weight
600 gr / m² // 17,69 oz / yd²

Reaction to fire
class D - s3, d2

Match



YOKU

design
Christian Benini

20510EWC



20520EWC



20530EWC

YOKU

design
Christian Benini

Set Images
p. 34

Roll dimensions
70 cm x 10 m // 27,56 in x 10,94 yd

Weight
600 gr / m² // 17,69 oz / yd²

Reaction to fire
class D - s3, d2

Match



ASHI

design
Studiopepe

20110EWC



20120EWC



20130EWC

ASHI

design
Studiopepe

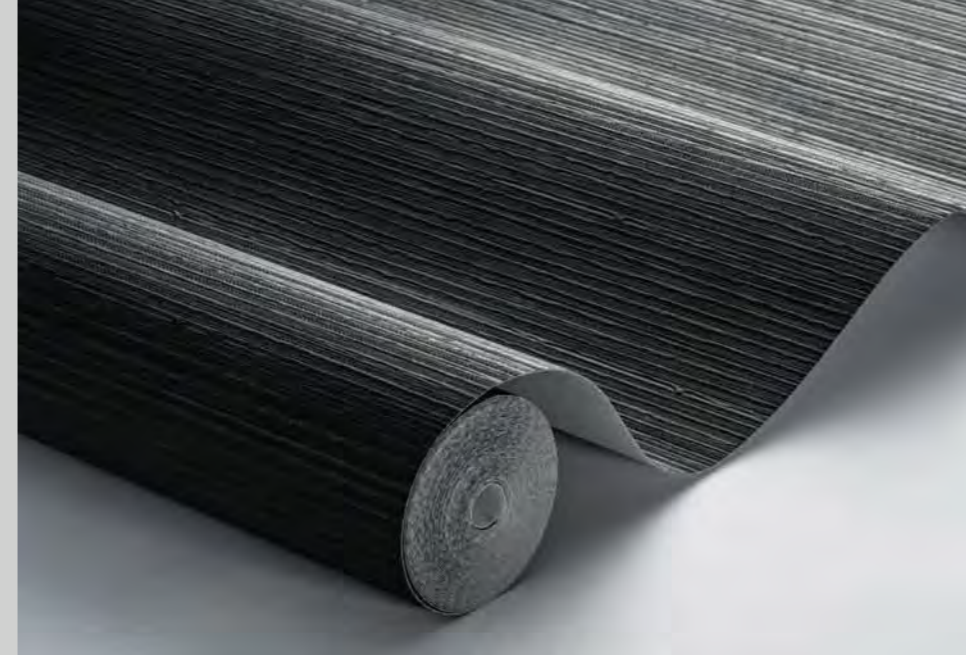
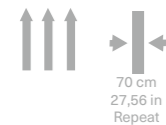
Set Images
p. 38

Roll dimensions
70 cm x 10 m // 27,56 in x 10,94 yd

Weight
600 gr / m² // 17,69 oz / yd²

Reaction to fire
class D - s3, d2

Match



KOMOREBI

design
Christian Benini

20410EWC



20420EWC



20430EWC

KOMOREBI

design
Christian Benini

Set Images
p. 42

Roll dimensions
70 cm x 10 m // 27,56 in x 10,94 yd

Weight
600 gr / m² // 17,69 oz / yd²

Reaction to fire
class D - s3, d2

Match



HA
design
Studiopepe

20310EWC



20320EWC



20330EWC

HA

design
Studiopepe

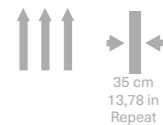
Set Images
p. 46

Roll dimensions
70 cm x 10 m // 27,56 in x 10,94 yd

Weight
600 gr / m² // 17,69 oz / yd²

Reaction to fire
class D - s3, d2

Match



HIKARI

design
Studiopepe

20210EWC



20220EWC



20230EWC

HIKARI

design
Studiopepe

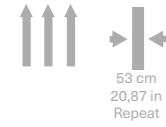
Set Images
p. 50

Roll dimensions
70 cm x 10 m // 27,56 in x 10,94 yd

Weight
600 gr / m² // 17,69 oz / yd²

Reaction to fire
class D - s3, d2

Match



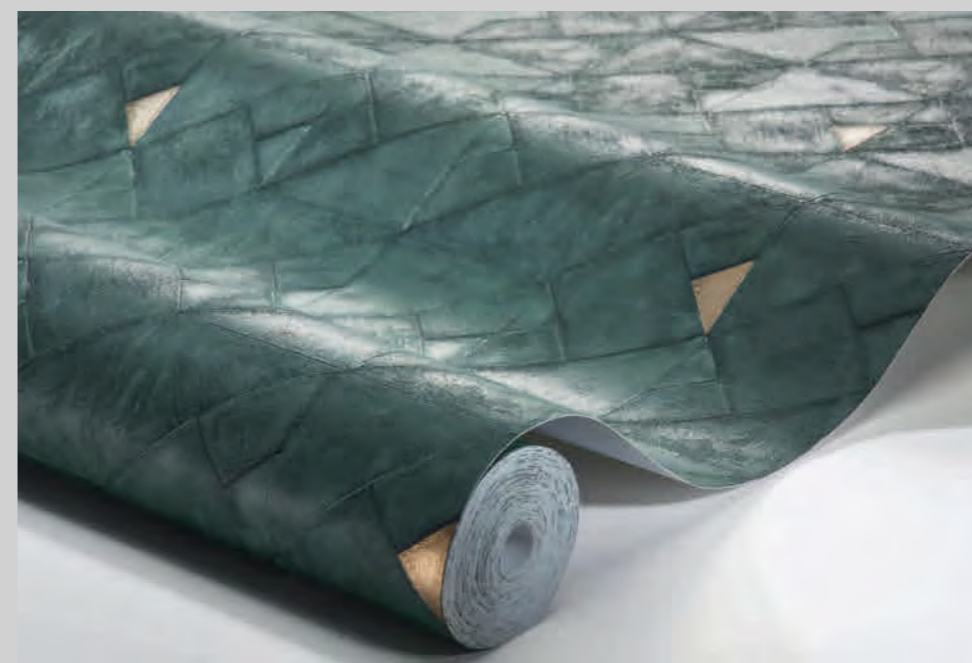
ASAMI

design
Studiopepe

19210EWC



19220EWC



19230EWC

ASAMI

design
Studiopepe

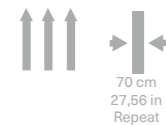
Set Images
p. 56

Roll dimensions
70 cm x 10 m // 27,56 in x 10,94 yd

Weight
420 gr / m² // 12,38 oz/yd²

Reaction to fire
class B - s2, d0

Match



HARU

design
Studiopepe

19310EWC



19320EWC



19330EWC

HARU

design
Studiopepe

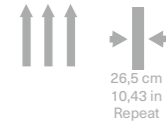
Set Images
p. 60

Roll dimensions
70 cm x 10 m // 27,56 in x 10,94 yd

Weight
420 gr / m² // 12,38 oz/yd²

Reaction to fire
class B - s2, d0

Match



NORI

design
Studiopepe

19110EWC



19120EWC



19130EWC

NORI

design
Studiopepe

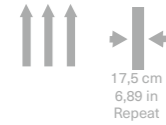
Set Images
p. 64

Roll dimensions
70 cm x 10 m // 27,56 in x 10,94 yd

Weight
420 gr / m² // 12,38 oz/yd²

Reaction to fire
class B - s2, d0

Match



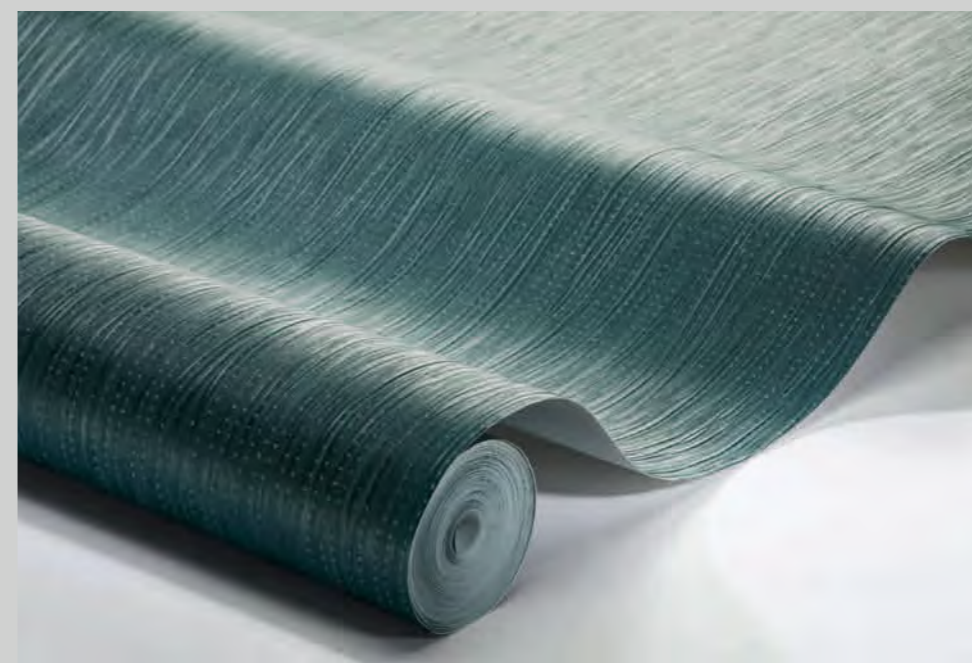
VAGO RELOADED

design
Christian Benini

17140EWC



17150EWC



17160EWC

VAGO RELOADED

design
Christian Benini

Set Images
p. 68

Roll dimensions
70 cm x 10 m // 27,56 in x 10,94 yd

Weight
380 gr / m² // 11,20 oz/yd²

Reaction to fire
class B - s2, d0

Match



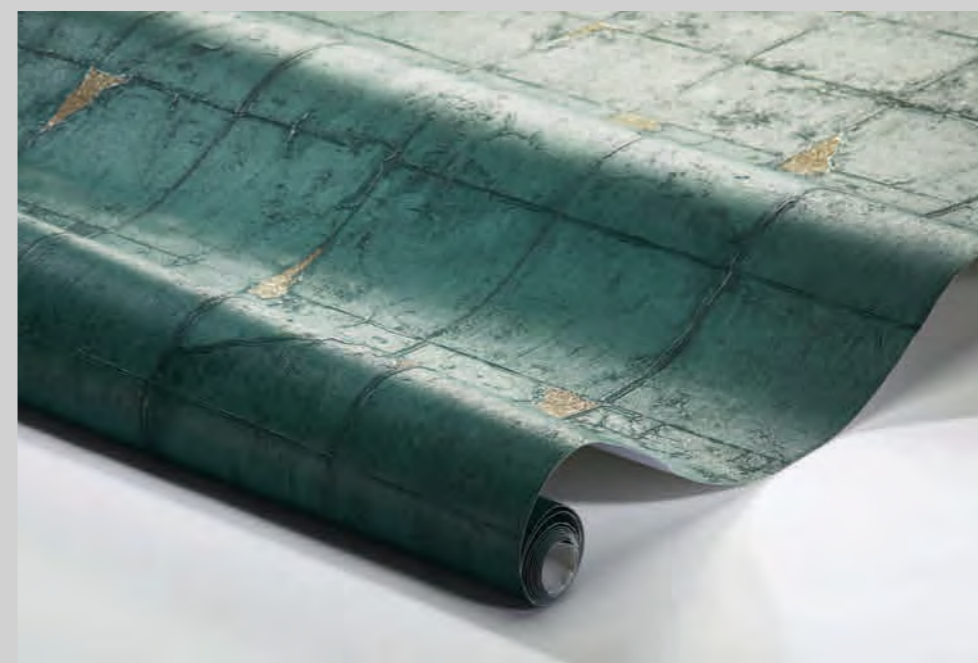
KINTSU RELOADED

design
Christian Benini

17240EWC



17250EWC



17260EWC

KINTSU RELOADED

design
Christian Benini

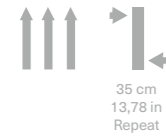
Set Images
p. 72

Roll dimensions
70 cm x 10 m // 27,56 in x 10,94 yd

Weight
380 gr / m² // 11,20 oz/yd²

Reaction to fire
class B - s2, d0

Match



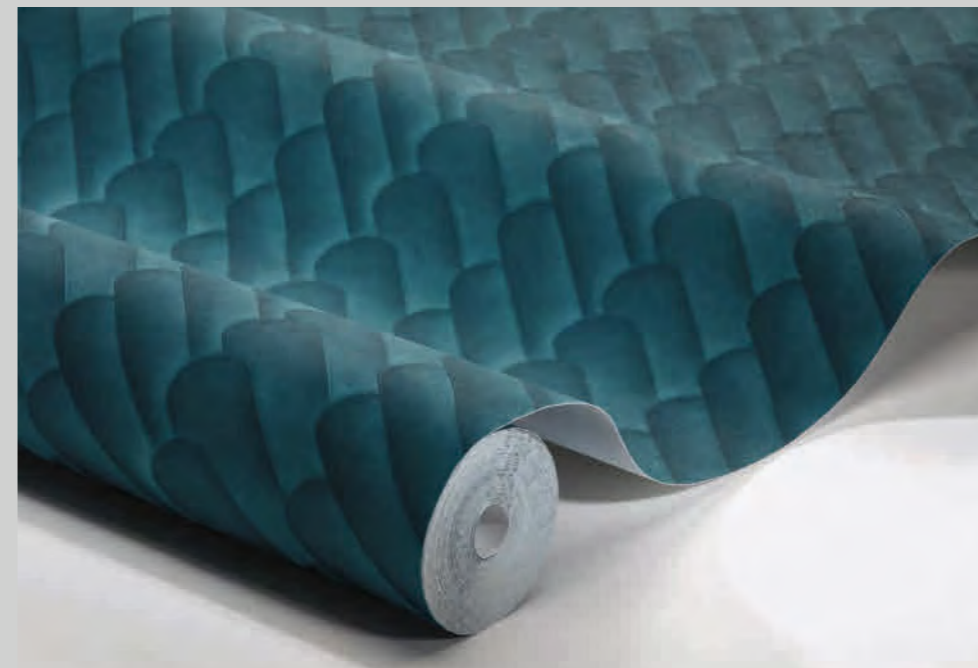
KAZE

design
Studiopepe

18210EWC



18220EWC



18230EWC

KAZE

design
Studiopepe

Set Images
p. 78

Roll dimensions
70 cm x 10 m // 27,56 in x10,94 yd

Weight
420 gr / m² // 12,38 oz/yd²

Reaction to fire
class B - s2, d0

Match



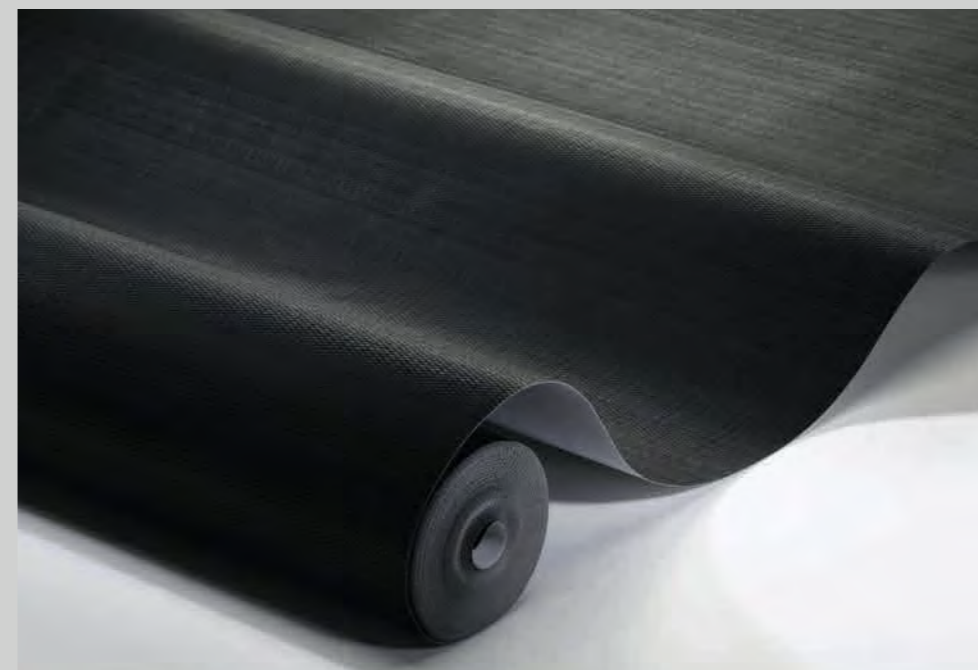
ZIP

design
Christian Benini

18410EWC



18420EWC



18430EWC

ZIP

design
Christian Benini

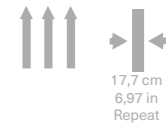
Set Images
p. 82

Roll dimensions
70 cm x 10 m // 27,56 in x 10,94 yd

Weight
420 gr / m² // 12,38 oz/yd²

Reaction to fire
class B - s2, d0

Match



RENN

design
André Fu

18510EWC



18520EWC



18530EWC

RENN

design
André Fu

Set Images
p. 86

Roll dimensions
70 cm x 10 m // 27,56 in x10,94 yd

Weight
420 gr / m² // 12,38 oz/yd²

Reaction to fire
class B - s2, d0

Match



YUMI

design
Studiopepe

18310EWC



18320EWC



18330EWC

YUMI

design
Studiopepe

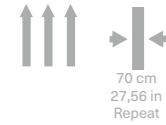
Set Images
p. 90

Roll dimensions
70 cm x 10 m // 27,56 in x10,94 yd

Weight
420 gr / m² // 12,38 oz/yd²

Reaction to fire
class B - s2, d0

Match



NAMI

design
Studiopepe

18110EWC



18120EWC



18130EWC

NAMI

design
Studiopepe

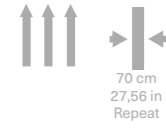
Set Images
p. 94

Roll dimensions
70 cm x 10 m // 27,56 in x 10,94 yd

Weight
420 gr / m² // 12,38 oz/yd²

Reaction to fire
class B - s2, d0

Match



VAGO

design
Christian Benini

17110EWC



17120EWC



17130EWC

VAGO

design
Christian Benini

Set Images
p. 100

Roll dimensions
70 cm x 10 m // 27,56 in x 10,94 yd

Weight
380 gr / m² // 11,20 oz/yd²

Reaction to fire
class B - s2, d0

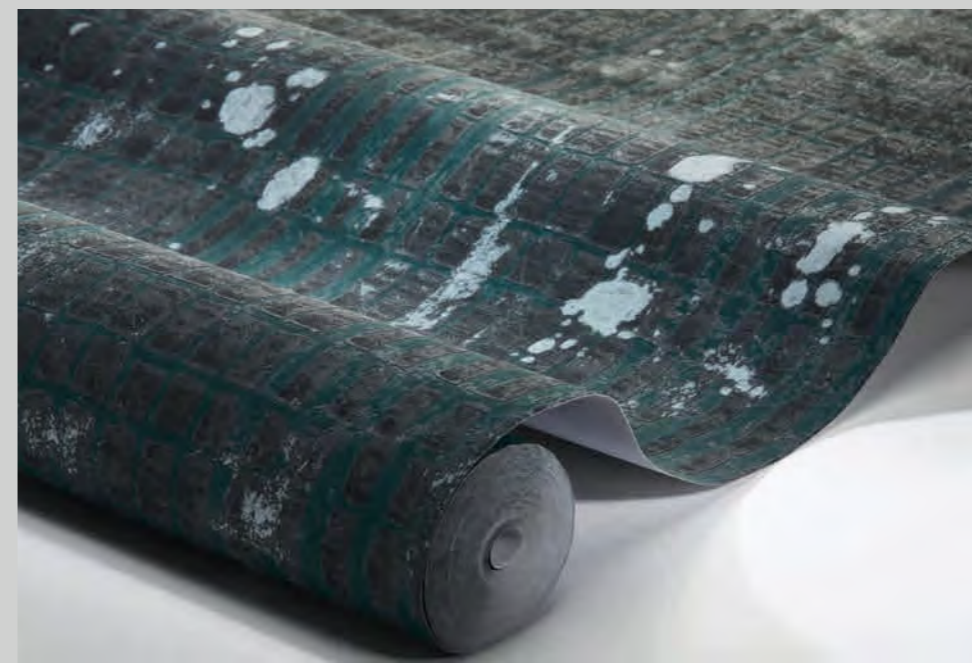
Match



ALYA

design
Christian Benini

17310EWC



17320EWC



17330EWC

ALYA

design
Christian Benini

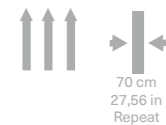
Set Images
p. 104

Roll dimensions
70 cm x 10 m // 27,56 in x 10,94 yd

Weight
380 gr / m² // 11,20 oz/yd²

Reaction to fire
class B - s2, d0

Match



KINTSU

design
Christian Benini

17210EWC



17220EWC



17230EWC

KINTSU

design
Christian Benini

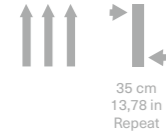
Set Images
p. 108

Roll dimensions
70 cm x 10 m // 27,56 in x 10,94 yd

Weight
380 gr / m² // 11,20 oz/yd²

Reaction to fire
class B - s2, d0

Match



DEEP

design
Christian Benini

17410EWC



17420EWC



17430EWC

DEEP

design
Christian Benini

Set Images
p. 112

Roll dimensions
70 cm x 10 m // 27,56 in x10,94 yd

Weight
380 gr / m² // 11,20 oz/yd²

Reaction to fire
 class B - s2, d0

Match



wallanddeco.com