

presenti

italiani

COLLECTION

*Design by*

GIOVANNI LUCA FERRERI



ARTE VENEZIANA®



PARSONS

ITALIANI  
COLLECTION

*Design by*  
GIOVANNI LUCA FERRERI



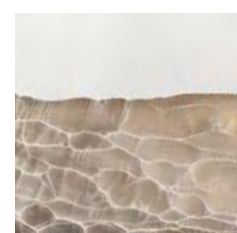
ARTE VENEZIANA®



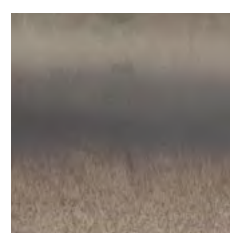
THE MIND IS NEVER MORE HIGHLY GRATIFIED  
THAN IN CONTEMPLATING A NATURAL LANDSCAPE.

LA MENTE NON È MAI COSÌ APPAGATA COME  
QUANDO SI CONTEMPLA UN PAESAGGIO NATURALE.

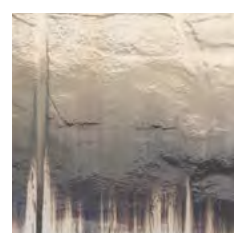
- HENRY HOME



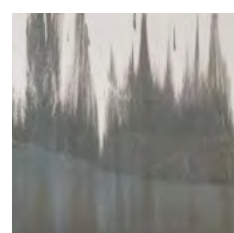
Miage > 6



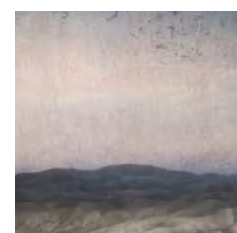
Neive > 14



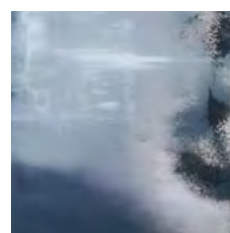
La Morra > 14



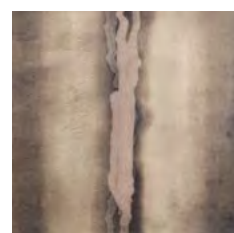
Barbaresco > 14



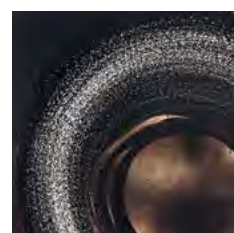
Roddi > 14



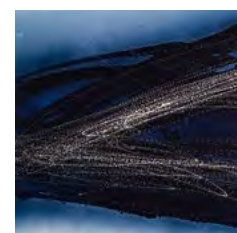
Laguna di Grado > 18



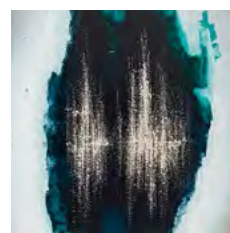
Aquileia > 22



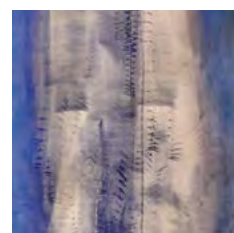
Milky Way > 26



Storm On The Sea > 30



Dolomiti > 34



Antelao > 38



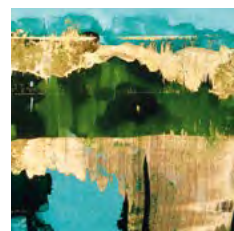
Presena > 42



Behind Monalisa > 48



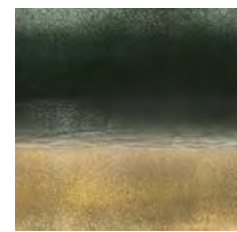
Soffioni > 52



Tuscany > 56



Volterra > 62



Etna > 70



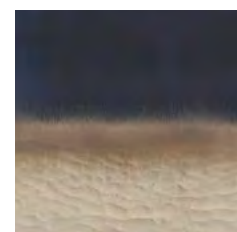
Vendicari > 80



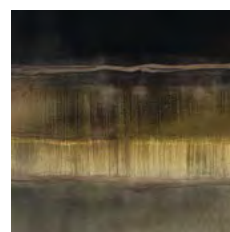
Girgenti > 86



Gargano > 90



Stromboli > 96



Lipari > 100



Salento > 104

## INTRODUCTION

*Introduzione*

PAESAGGI ITALIANI 1

## NORTHERN ITALY

*Italia Settentrionale*

MIAGE	6
NEIVE	14
LA MORRA	14
BARBARESCO	14
RODDI	14
LAGUNA DI GRADO	18
AQUILEIA	22
MILKY WAY	26
STORM ON THE SEA	30
DOLOMITI	34
ANTELAO	38
PRESENA	42

## CENTRAL ITALY

*Italia Centrale*

BEHIND MONALISA	48
SOFFIONI	52
TUSCANY	56
VOLTERRA	62

## SOUTHERN ITALY

*Italia Meridionale*

ETNA	70
VENDICARI	80
GIRGENTI	86
GARGANO	90
STROMBOLI	96
LIPARI	100
SALENTO	104

## FAMILY LINE PRODUCTS

*Prodotti della linea*

FURNITURE AND MIRRORS 112



# PAESAGGI ITALIANI

CONTEMPORARY COLLECTION

*Design by* Giovanni Luca Ferreri

Paesaggi Italiani takes inspiration from Italy and its uniqueness. The new family line is like a wonderful journey along the country which focuses on its monuments and beautiful places that fascinates the eye of the observer.

One can start with Behind Mona Lisa, a clear tribute to the world famous painting: La Gioconda. Then you will jump from the yellow of the typical Magna Graecia rock tuff with its huge temples, into the distinctive shades of the Dolomites. A dive into the blue of the sea to the grey streaked marble of the ancient Roman ruins of Aquileia.

A journey into the rediscovery of nature and our roots. So as not to forget.

Paesaggi Italiani si ispira all'Italia e alla sua unicità. Un viaggio ideale lungo la penisola, che indaga con sguardo creativo e spirito mistico luoghi e monumenti capaci di mantenere vivo ancora oggi il fascino del Belpaese.

E se Behind Monna Lisa è un chiaro omaggio al quadro più famoso del mondo, La Gioconda, si è successivamente avvolti dalla grandezza della Magna Grecia, con i suoi templi patrimonio dell'Unesco fino all'inimitabile sfumatura delle montagne più suggestive al mondo le Dolomiti. Ci si tuffa poi idealmente nel blu del mare fino a giungere al grigio striato degli scavi romani di Aquileia.

Un viaggio all'insegna della riscoperta della natura e delle nostre radici. Per non dimenticarcelo.





ARTE VENEZIANA







## MIAGE

Extra-clear glass decorated on the front with silvered engravings and medium antique finish.

Vetro extra-chiaro decorato frontalmente con incisioni argentate e finitura antico medio.







*Miage*

---

MONT BLANC Table

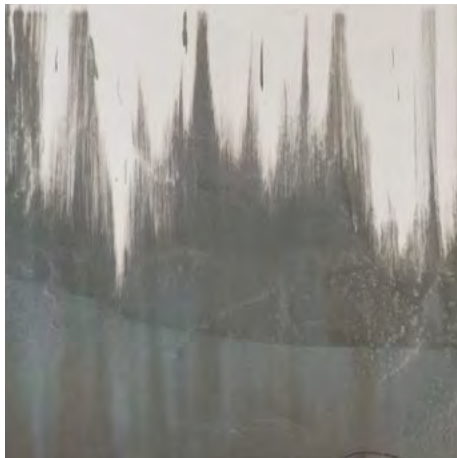




LA MORRA



BARBARESCO



NEIVE



RODDI

*La Morra*, sandblasted and partially silvered extra-clear glass. *Barbaresco*, extra-clear baked glass with pure poured silver. *Neive*, extra-clear baked and sandblasted glass with pure poured silver. *Roddi*, extra-clear baked and sandblasted glass, engraved on the edge and partially silvered. The four finishes inspired by Piedmontese panoramas form the landscape of the Langhe.

*La Morra*, vetro extra-chiaro opaco sabbato e parzialmente argentato. *Barbaresco*, vetro extra-chiaro cotto con argento colato. *Neive*, vetro extra-chiaro cotto e sabbato con argento colato. *Roddi*, vetro extra-chiaro cotto e sabbato, inciso sul bordo e parzialmente argentato. Le quattro finiture ispirate alle vedute piemontesi vanno a comporre il paesaggio delle Langhe.





*La Morra, Barbaresco, Neive and Roddi*

LANGHE Screen





## LAGUNA DI GRADO

Extra-clear acid-etched glass decorated with dark-blue and white hues, all silvered in a heavy antique finish.

Vetro extra-chiaro acidato decorato con colori blu scuro e bianco, tutto argentato con finitura antico pesante.





*Laguna di Grado*

MARCIANA Bookcase





## AQUILEIA

Extra-clear acid-etched glass decorated with engraved designs on the front and back, all silvered in a heavy antique finish with an earthen colour effect.

Vetro extra-chiaro acidato decorato con incisioni davanti e dietro, tutto argentato con finitura antico pesante effetto terra.





*Aquileia*

PALMANOVA Buffet





## MILKY WAY

Extra-clear glass decorated with night hues on a circular shiny decorative engraved design, all silvered in a heavy antique finish.

Vetro extra-chiaro decorato con sfumature di colore notte su motivo decorativo inciso circolare lucido, tutto argentato con finitura antico pesante.





*Milky Way*

---

ORIONE Coffee table



## STORM ON THE SEA

Extra-clear glass decorated with silver engravings portraying a wave design with white, light blue and navy hues.

Vetro extra-chiaro decorato con incisioni argentate raffiguranti un motivo di onda e sfumature di bianco, azzurro e blu.





*Storm On The Sea*

OSTRO Buffet



## DOLOMITI

Extra-clear glass engraved and decorated with white and green hues on a silver leaf design, all silvered in a heavy antique finish.

Vetro extra-chiaro decorato con incisioni, foglia argento e sfumature di colore bianco e verde, tutto argentato con finitura antico pesante.

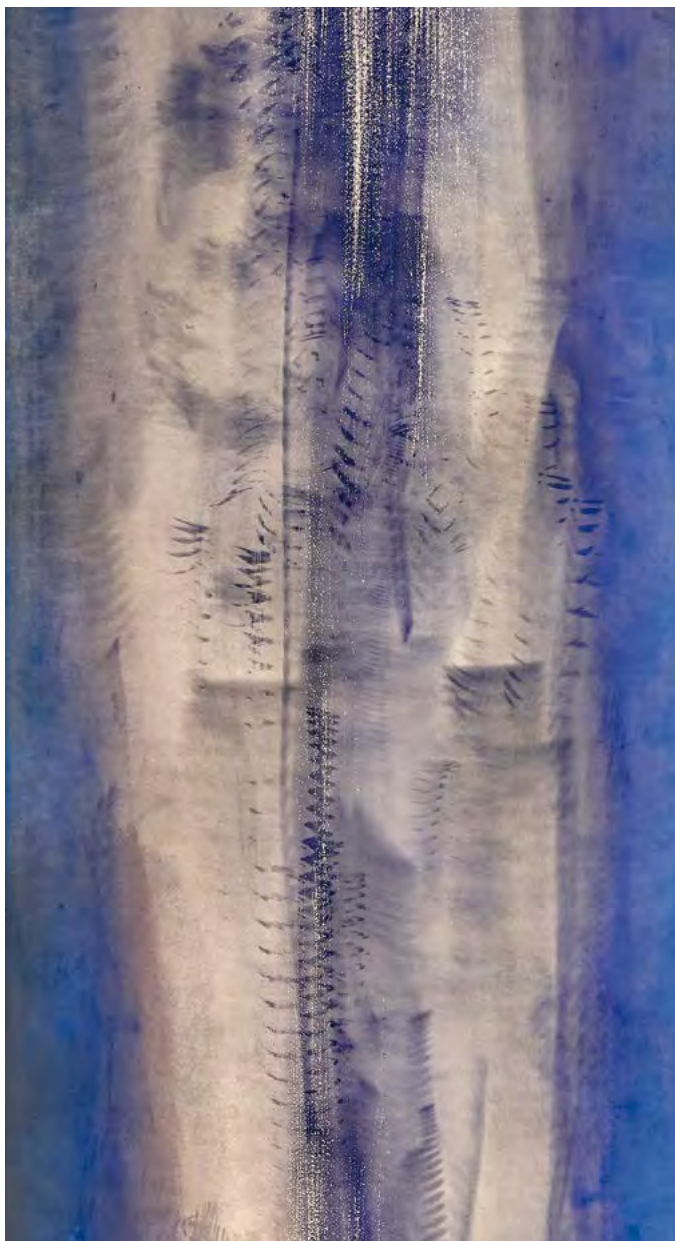




*Dolomiti*

CRISTALLO Cabinet





## ANTELAO

Extra-clear acid-etched glass decorated with engravings in blue hues, all silvered in a heavy brushed antique finish.

Vetro extra-chiaro acidato decorato con incisioni e sfumature di colore blu, tutto argentato con finitura spazzolata antico pesante.





*Antelao*

OSTRO Buffet

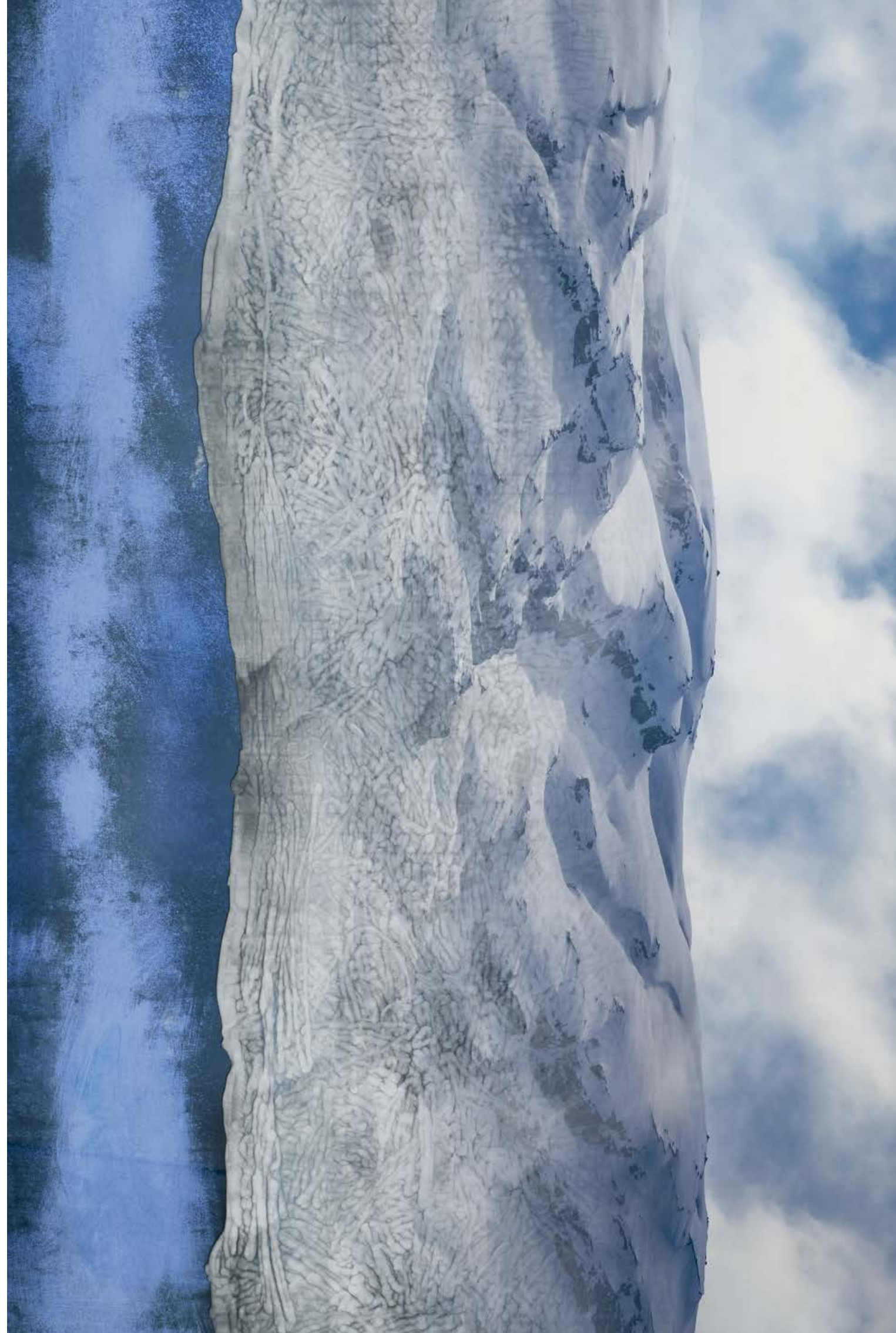




## PRESENA

Extra-clear glass decorated with engravings in the centre, all shaded in blue and silvered in a heavy antique finish.

Vetro extra-chiaro decorato con incisione al centro, tutto sfumato di colore blu e argentato con finitura antico pesante.





*Presena Special*

PRESANELLA Sideboard





## BEHIND MONALISA

Extra-clear glass with burgundy, light blue and dark blue hues on a gold leaf design, all silvered in a heavy antique finish.

Vetro extra-chiaro decorato con colorazioni bordeaux, azzurro e blu scuro su motivo a foglia oro, tutto argentato con finitura antico pesante.





*Behind Monalisa*

LEONARDO Cabinet



## SOFFIONI

Extra-clear glass engraved on the front with diamond pen and decorated on the back with puffball designs with gold leaf, white and blue, all shaded in black and silvered in a heavy antique finish.

Vetro extra-chiaro, inciso davanti con penna a diamante e decorato dietro a motivo di soffioni con foglia oro e colori blu e bianco, tutto sfumato di colore nero e argentato con finitura antico pesante.







*Soffioni*

WALL COVERINGS - Bathroom



## TUSCANY

Extra-clear glass decorated with green, blue, turquoise and white on a gold leaf design.

Vetro extra-chiaro decorato con colorazioni verde, blu, turchese e bianco su motivo a foglia oro.





*Tuscany*

DOOR COVERINGS - Living Room





## VOLTERRA

Extra-clear acid-etched glass decorated with dark-blue, olive-green and white hues on gold leaf designs, all silvered in a heavy antique finish.

Vetro extra-chiaro acidato decorato con colori blu scuro, verde oliva e bianco su motivo a foglia oro, tutto argentato con finitura antico pesante.





*Volterra*

DOOR COVERINGS - Bedroom









## ETNA

Extra-clear glass decorated with engravings in the centre and shaded with teal and gold hues, all silvered in a heavy antique finish.

Vetro extra-chiaro decorato con incisioni al centro e sfumature di colore ottanio e giallo oro, tutto argentato con finitura antico pesante.





*Etna*

SCORCI VERTICALI Mirror



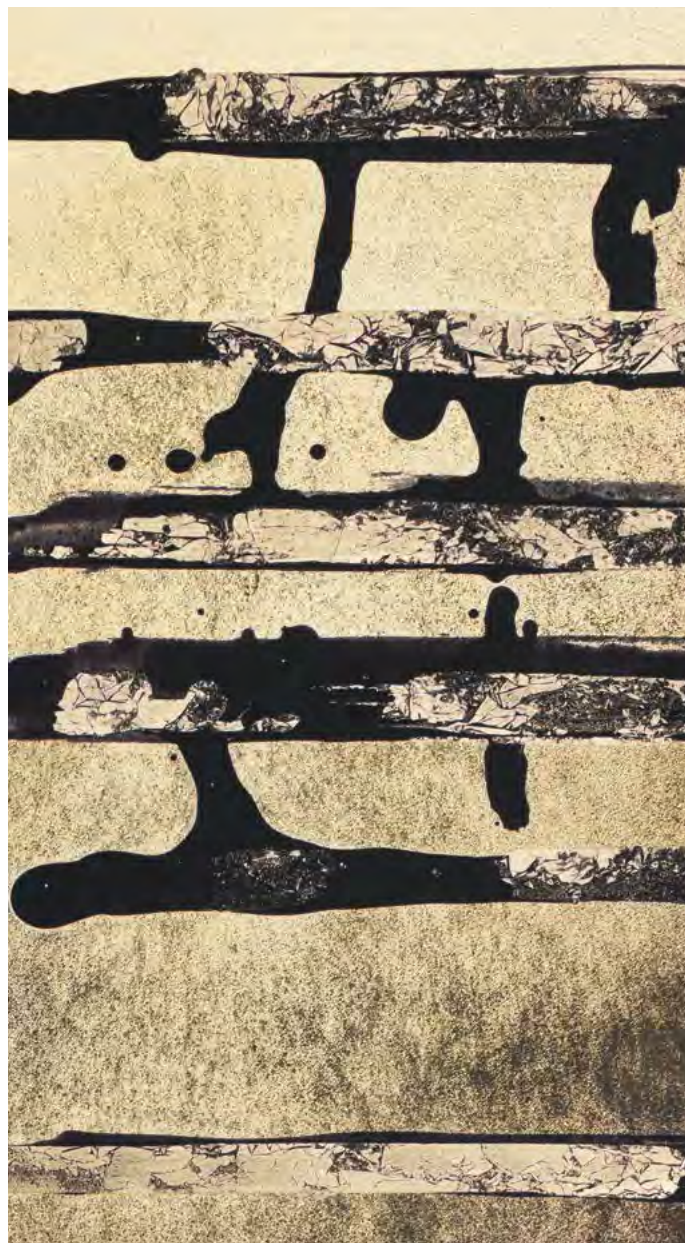




*Etna*

DOOR COVERINGS - Kitchen





## VENDICARI

Extra-clear glass decorated with black hues on gold leaf, shaded gold and silvered in a medium antique finish.

Vetro extra-chiaro decorato con pennellate di colore nero su motivo a foglia oro, tutto sfumato oro e argentato con finitura antico pesante.





*Vendicari*

WALL COVERINGS - Living Room







## GIRGENTI

Extra clear glass decorated with white and khaki hues on a scratched gold leafed design, all silvered in a heavy antique finish.

Vetro extra-chiaro decorato con sfumature di colore bianco e verde militare su motivo a foglia oro graffiato, tutto argentato con finitura antico pesante.





*Girgenti*

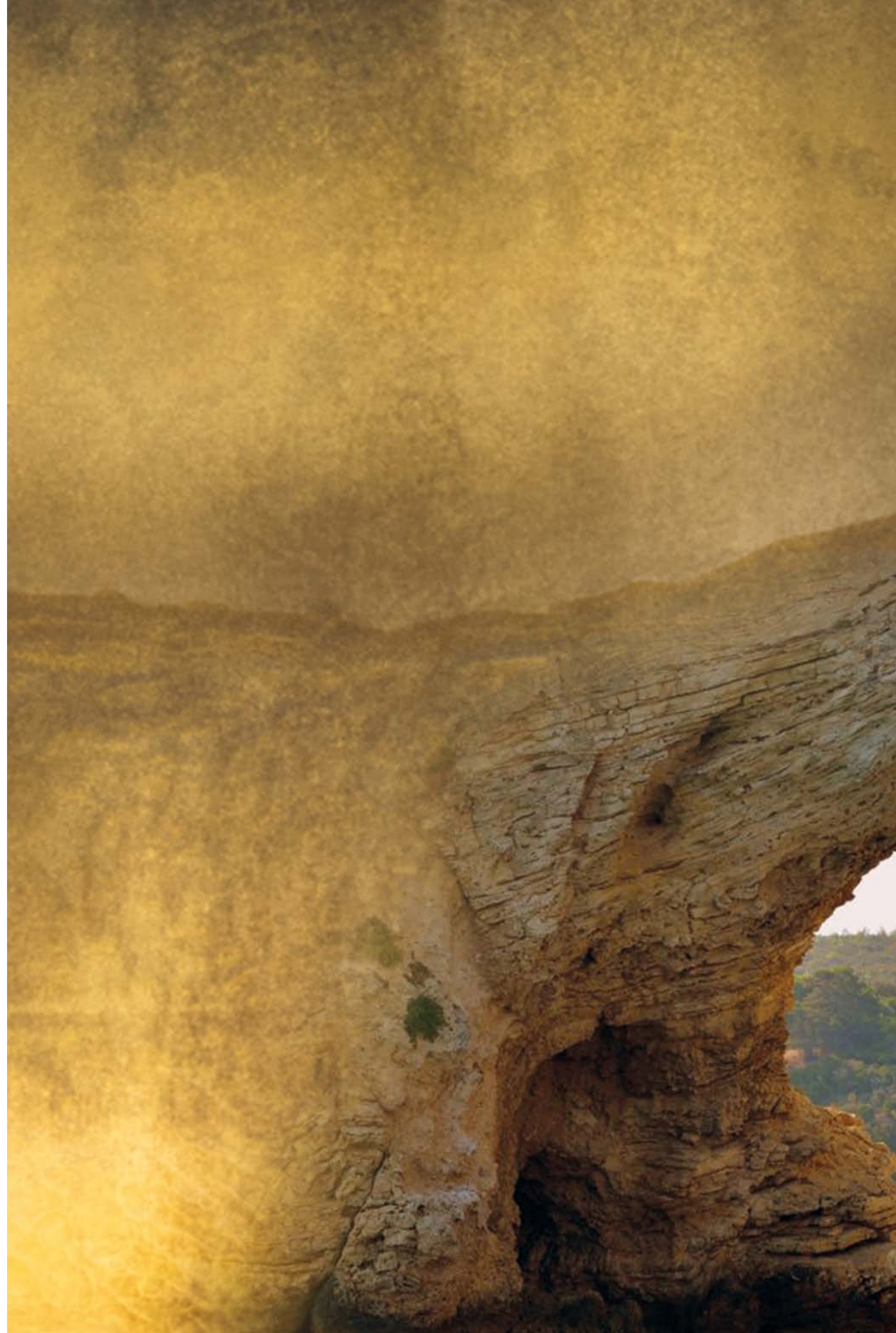
CONCORDIA Buffet



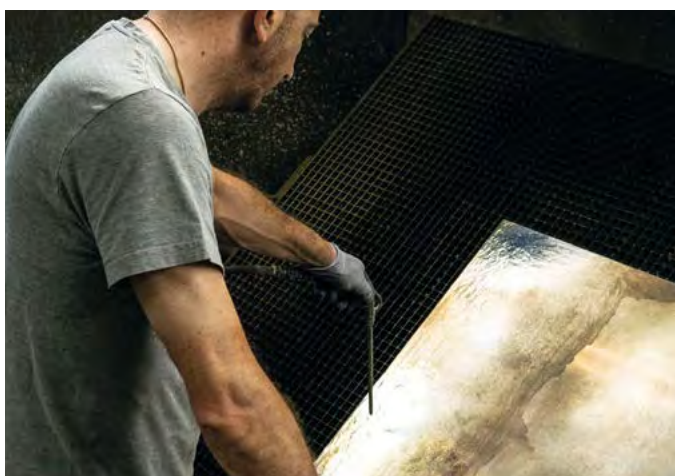
## GARGANO

Extra-clear acid-etched glass engraved and decorated with gold hues, all silvered in a heavy antique finish.

Vetro extra-chiaro acidato decorato con incisioni e sfumature di colore oro, tutto argentato con finitura antico pesante.

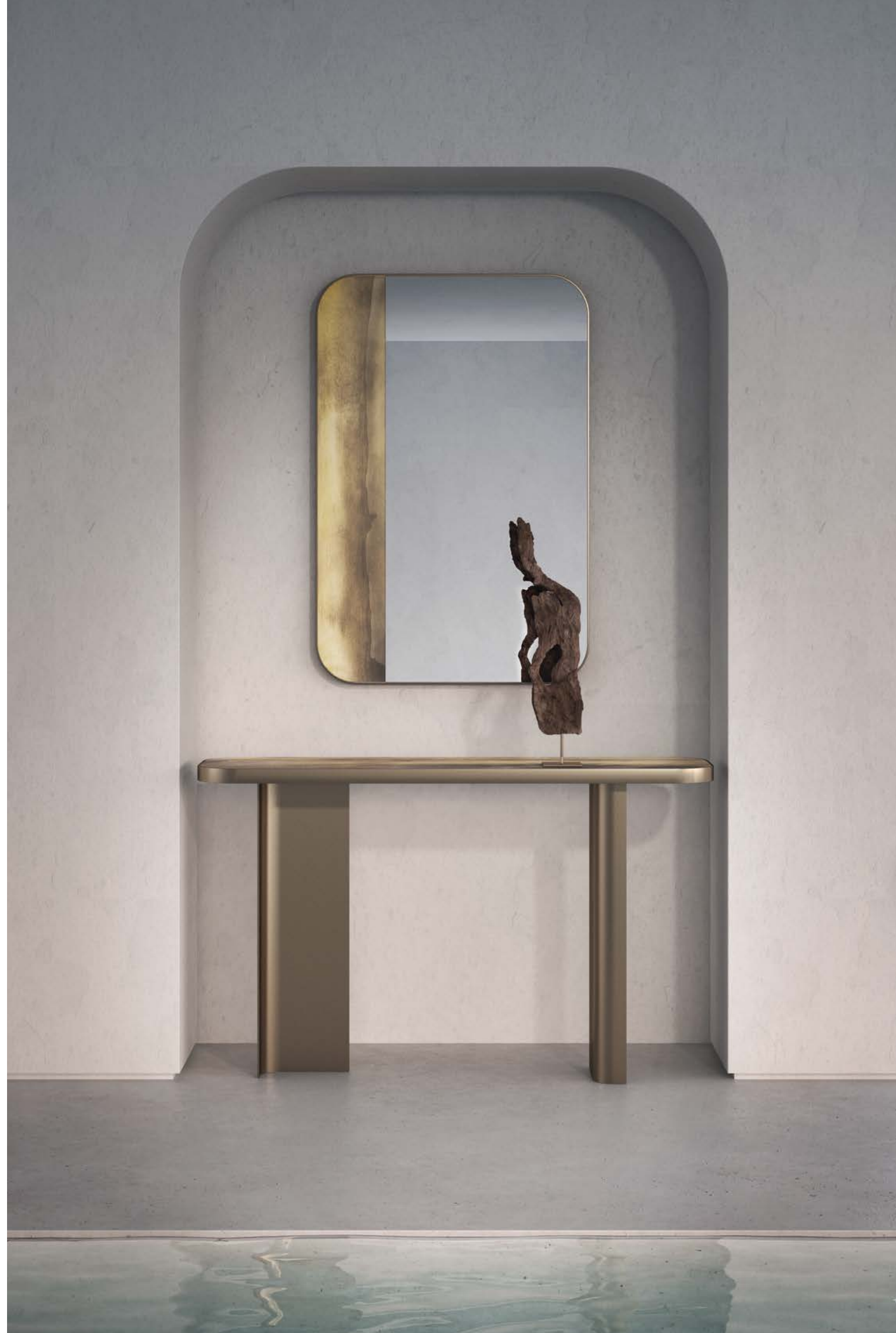






*Gargano*

PIZZOMUNNO Mirror  
POGGIO Console





## STROMBOLI

Extra-clear acid-etched glass decorated with silver engravings on the front and shaded with blue on the back, all silvered in a heavy antique finish.

Vetro extra-chiaro acidato decorato con incisioni argentate davanti e sfumato di colore blu dietro, tutto argentato con finitura antico pesante.





*Stromboli*

FRAMMENTI Sideboard



## LIPARI

Extra-clear acid-etched glass decorated with engravings and partially shaded golden yellow, all silvered in a heavy antique finish.

Vetro extra-chiaro acidato decorato con incisioni e sfumato parzialmente di colore giallo oro, tutto argentato con finitura antico pesante.







*Lipari*

EURIALO Screen





## SALENTO

Extra-clear acid-etched glass decorated with white spatula technique and dark blue with golden yellow hues, all silvered in a heavy antique finish.

Vetro acidato extra-chiaro decorato con colorazioni di bianco spatolato e blu scuro, tutto sfumato di colore giallo oro e argentato con finitura antico pesante.





*Salento*

WALL COVERINGS - Living Room







*Mixed finishes*

---

**ISONZO Mirror**

W. 114 cm 44" <sup>7</sup>/<sub>8</sub>  
D. 5 cm 2"  
H. 179 cm 70" <sup>1</sup>/<sub>2</sub>





The creation of the mirror-masterpiece, inspired by the most vulnerable and hidden nature of the peninsula, was made possible thanks to our know-how in the world of decorative and engraving craftsmanship, encapsulating the highest artistic expression of the Paesaggi Italiani collection.

La creazione dello specchio-masterpiece, ispirato alla natura più vulnerabile e nascosta della penisola, è stata possibile grazie al nostro know-how nel campo dell'arte artigianale decorativa e incisoria racchiudendo in sé la massima espressione artistica legata alla collezione Paesaggi Italiani.





*Etna*

SCORCI VERTICALI Mirror

W. 133 cm 52" <sup>3</sup>/<sub>8</sub>"  
D. 3 cm 1" <sup>1</sup>/<sub>8</sub>"  
H. 122 cm 48"



*Gargano*

SCORCI ORIZZONTALI Mirror

W. 151 cm 59" <sup>1</sup>/<sub>2</sub>"  
D. 3 cm 1" <sup>1</sup>/<sub>8</sub>"  
H. 130 cm 51" <sup>1</sup>/<sub>8</sub>"





*Lipari*

TREMEZZO Mirror with shelf

W. 80 cm 31" 1/2  
D. 25 cm 10"  
H. 280 cm 110" 1/4



*Gargano*

TREMITI Mirrors

Ø 70 cm 27" 1/2  
Ø 60 cm 23" 5/8  
Ø 50 cm 19" 5/8



*Gargano*

---

**PIZZOMUNNO Mirror**

W. 80 cm 31" 1/2  
H. 120 cm 47" 1/4

| 120 |



*Gargano*

---

**POGGIO Console**

W. 160 cm 63"  
D. 40 cm 15" 3/4  
H. 90 cm 35" 1/2

| 121 |



*Lipari*

---

**LARIO Console**

W. 140 cm 55" 1/8  
D. 42 cm 16" 1/2  
H. 90 cm 35" 1/2



*Gargano*

---

**LARIO Console**

W. 140 cm 55" 1/8  
D. 42 cm 16" 1/2  
H. 90 cm 35" 1/2



*Miage*

---

**MONZINO** Coffee table

W. 110 cm 43" 1/4  
D. 84 cm 33"  
H. 38 cm 15"



*Milky Way*

---

**ORIONE** Coffee table

W. 120 cm 47" 1/4  
D. 120 cm 47" 1/4  
H. 38 cm 15"



*Gargano*

MANACORE Coffee table

W. 90 cm 35" 1/2  
D. 90 cm 35" 1/2  
H. 28 cm 11"

| 126 |



*Gargano*

LAMIS Table

W. 300 cm 118" 1/8  
D. 120 cm 47" 1/4  
H. 76 cm 29" 7/8

| 127 |



*Miage*

---

**UGET Table**

W. 220 cm 86" <sup>5</sup>/<sub>8</sub>  
D. 100 cm 39" <sup>3</sup>/<sub>8</sub>  
H. 74 cm 29" <sup>1</sup>/<sub>8</sub>



*Miage*

---

**MONT BLANC Table**

W. 313 cm 123" <sup>1</sup>/<sub>4</sub>  
D. 130 cm 51" <sup>1</sup>/<sub>8</sub>  
H. 77 cm 30" <sup>3</sup>/<sub>8</sub>



*Stromboli*

FRAMMENTI Sideboard

W. 221 cm 87"  
D. 57 cm 22" 1/2  
H. 70 cm 27" 1/2



*Gargano*

PESCHICI Sideboard

W. 220 cm 86" 5/8  
D. 47 cm 18" 1/2  
H. 71 cm 28"



*Etna*

---

**ALCANTARA Sideboard**

W. 220 cm 86" <sup>5</sup>/<sub>8</sub>  
D. 55 cm 21" <sup>5</sup>/<sub>8</sub>  
H. 64 cm 25" <sup>1</sup>/<sub>4</sub>

*Presena*

---

**PRESANELLA Sideboard**

W. 220 cm 86" <sup>5</sup>/<sub>8</sub>  
D. 55 cm 21" <sup>5</sup>/<sub>8</sub>  
H. 64 cm 25" <sup>1</sup>/<sub>4</sub>





*Volterra*

---

**ETRURIA Sideboard**

W. 220 cm 86" <sup>5</sup>/<sub>8</sub>  
D. 55 cm 21" <sup>5</sup>/<sub>8</sub>  
H. 64 cm 25" <sup>1</sup>/<sub>4</sub>



*Storm On The Sea*

---

**OSTRO Buffet**

W. 200 cm 78" <sup>3</sup>/<sub>4</sub>  
D. 53 cm 20" <sup>7</sup>/<sub>8</sub>  
H. 87 cm 34" <sup>1</sup>/<sub>4</sub>



*Girgenti*

CONCORDIA Buffet

W. 200 cm 78" <sup>3</sup>/<sub>4</sub>  
D. 53 cm 20" <sup>7</sup>/<sub>8</sub>  
H. 87 cm 34" <sup>1</sup>/<sub>4</sub>

| 136 |



*Aquileia*

PALMANOVA Buffet

W. 200 cm 78" <sup>3</sup>/<sub>4</sub>  
D. 53 cm 20" <sup>7</sup>/<sub>8</sub>  
H. 87 cm 34" <sup>1</sup>/<sub>4</sub>

| 137 |



*Gargano*

---

NICANDRO Cabinet

W. 110 cm 43" 1/4  
D. 40 cm 15" 3/4  
H. 109 cm 42" 7/8



*Limides*

---

FALZAREGO Cabinet

W. 110 cm 43" 1/4  
D. 40 cm 15" 3/4  
H. 109 cm 42" 7/8



*Gargano*

---

**VIESTE Cabinet**

W. 100 cm 39" <sup>3</sup>/<sub>8</sub>  
D. 45 cm 17" <sup>3</sup>/<sub>4</sub>  
H. 150 cm 59"



*Behind Monalisa*

---

**LEONARDO Cabinet**

W. 101 cm 39" <sup>3</sup>/<sub>4</sub>  
D. 53 cm 20" <sup>7</sup>/<sub>8</sub>  
H. 160 cm 63"



*Dolomiti*

---

**CRISTALLO** Cabinet

W. 101 cm 39" <sup>3</sup>/<sub>4</sub>  
D. 53 cm 20" <sup>7</sup>/<sub>8</sub>  
H. 160 cm 63"



*Antelao*

---

**GALASSI** Cabinet

W. 101 cm 39" <sup>3</sup>/<sub>4</sub>  
D. 53 cm 20" <sup>7</sup>/<sub>8</sub>  
H. 160 cm 63"



*Lipari*

**EURIALO** Screen

W. 55 cm 21" <sup>5</sup>/<sub>8</sub>

D. 4,5 cm 1" <sup>3</sup>/<sub>4</sub>

H. 180 cm 70" <sup>7</sup>/<sub>8</sub>

Each Panel



*La Morra, Barbaresco, Neive and Roddi*

**LANGHE** Screen

W. 160 cm 63"

D. 7,5 cm 3"

H. 347 cm 136" <sup>5</sup>/<sub>8</sub>



*Gargano, Etna and Battuto*

**NUVOLE Chandelier**

W. 113 cm 44" 1/2  
 D. 45 cm 17" 3/4  
 H. 95 cm 37" 3/8  
 3 lights



*Gargano*

**LUNE Chandelier**

W. 110 cm 43" 1/4  
 D. 81 cm 31" 7/8  
  
 W. 85 cm 33" 1/2  
 D. 63 cm 24" 3/4  
  
 W. 60 cm 23" 5/8  
 D. 44 cm 17" 3/8  
 H. variable



*Tuscany*

TUSCANY Wall Covering

W. 80 cm 31" 1/2

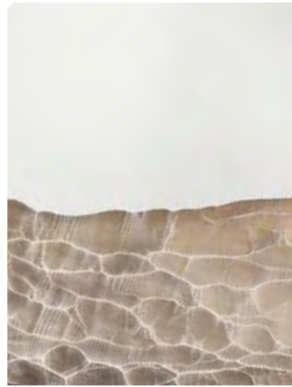
H. 260 cm 102" 3/8

Each Panel

| 148 |







*Miage*



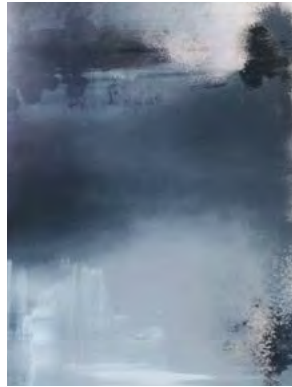
*Dolomiti*



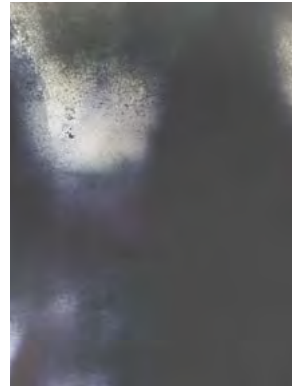
*Antelao*



*Presena*



*Laguna di Grado*



*Laguna di Marano*



*Trieste*



*Storm On The Sea*



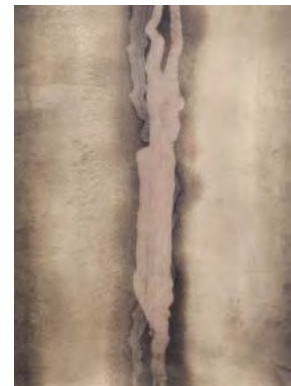
*Storm*



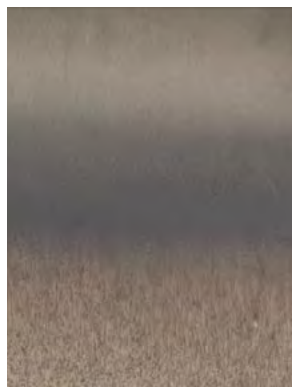
*Milky Way*



*Mugello*



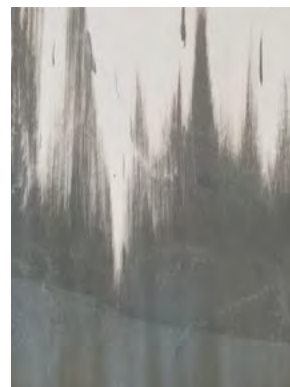
*Aquilaia*



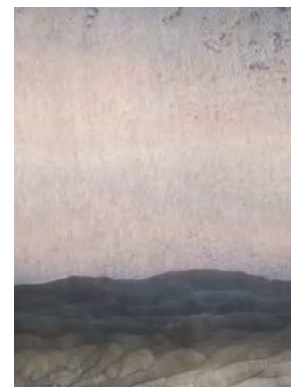
*La Morra*



*Barbaresco*



*Neive*



*Roddi*



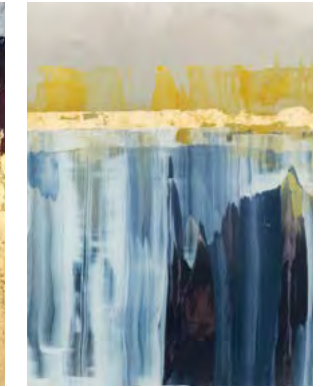
*Limides*



*Gran Sasso*



*Behind Monalisa*



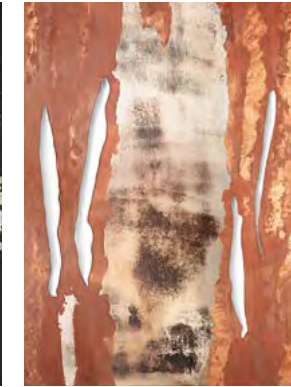
*Volterra*



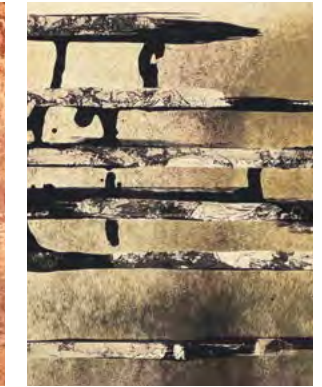
*Soffioni*



*Girasoli*



*Massenzio*



*Vendicari*



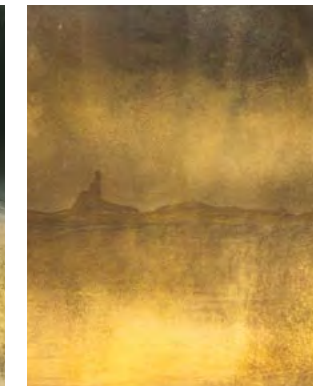
*Tuscany*



*Girgenti*



*Etna*



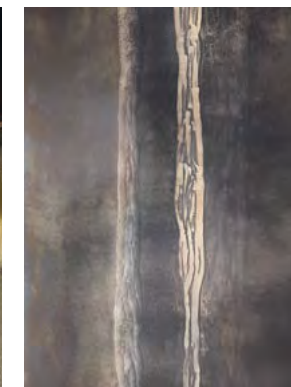
*Gargano*



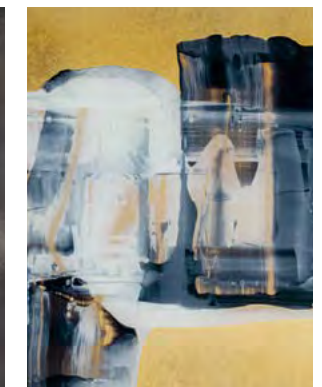
*Stromboli*



*Lipari*



*Vulcano*



*Salento*



ARTE VENEZIANA®

**ARTE VENEZIANA SRL**

Via Cattaneo, 7  
30030 Olmo di Martellago  
Venezia, Italy

T +39 041 90 89 20  
sales@arteveneziana.com

**www.arteveneziana.com**

Concept by

**ARTE VENEZIANA SRL**

Photo by

www.salmasofotografia.it  
www.quasarfoto.com

Render by

www.inthemiddlestudio.com  
www.giovannilucaferreri.it

Arte Veneziana® - All rights reserved



