



Surfaces





Surfaces / Superfici

Artistic Decorations for Architectural Coverings

This catalogue showcases the artistic heritage and technical mastery that Arte Veneziana has cultivated since its foundation.

Within these pages is a curated selection of decorations designed for architectural coverings, spanning from boiserie and doors to ceiling treatments and distinctive bespoke furnishing elements.

Drawing on the expertise of its artists and master craftsmen, Arte Veneziana develops surfaces that range from innovative experimental expressions to refined traditional decorations. The collection is conceived to provide architects, planners, and designers with an inspiring overview of Venetian decorative techniques, suitable for both classical and contemporary design projects.

The decorations presented encompass lathe engraving, grinding, pictorial decoration, enamelling, and glass fusion in its most contemporary interpretations. Each creation is entirely bespoke: colours, forms, and decorative motifs are meticulously tailored to meet the specific requirements of every project.

Decorazioni artistiche per rivestimenti architettonici

Il catalogo che vi apprestate a leggere contiene tutto il savoir-faire artistico che Arte Veneziana ha sviluppato a partire dalla sua fondazione.

In questo volume abbiamo raccolto tutte le decorazioni impiegate nei rivestimenti architettonici: dalle boiserie alle porte, dai rivestimenti per soffitto fino agli elementi di arredo più inusuali.

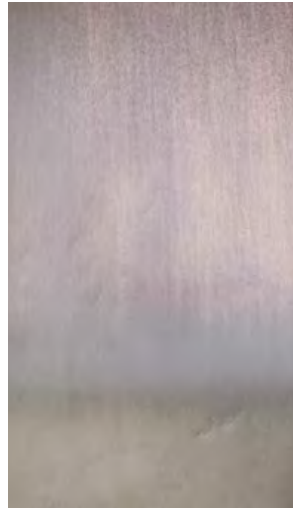
Attraverso le competenze dei propri artisti e artigiani, Arte Veneziana realizza superfici sperimentali e decorazioni più tradizionali: l'obiettivo è quello di offrire una panoramica a progettisti e designer sulle tecniche veneziane applicabili ai loro progetti, sia in ambito classico che contemporaneo.

Le decorazioni presentate spaziano dall'incisione a tornio alla molatura, dalla decorazione pittorica alla smaltatura passando per la fusione del vetro nelle sue forme più moderne.

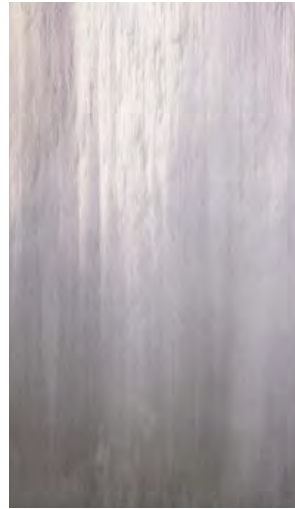
Resta inteso che ciascuna proposta può essere realizzata su misura in base alle richieste del progettista: colori, forme e decori vengono adattate a ciascun specifico progetto.



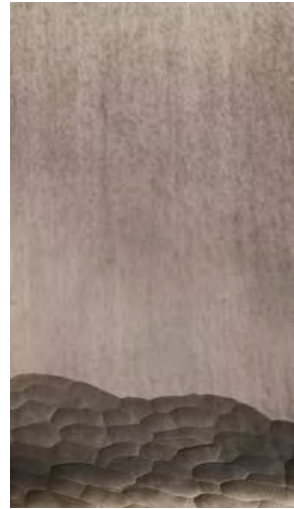
Langhe / Barbaresco 16



Langhe / Morra 16



Langhe / Neive 17



Langhe / Roddi 17



Girgenti 62



Vendicari 68



Cave / Fondale #01 24



Cave / Fondale #02 24



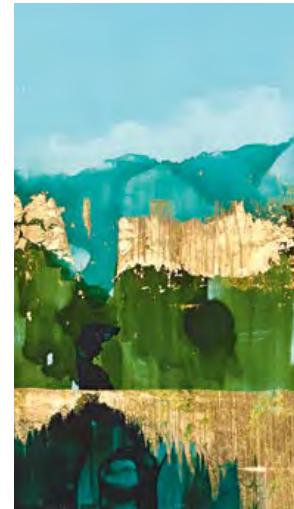
Cave / Fondale #03 25



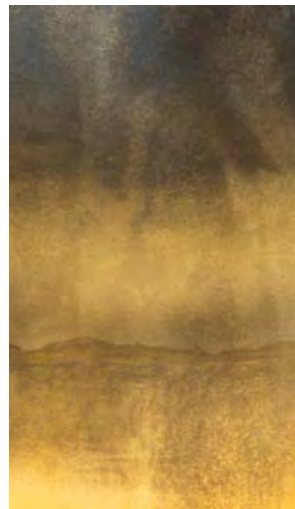
Cave / Fondale #04 25



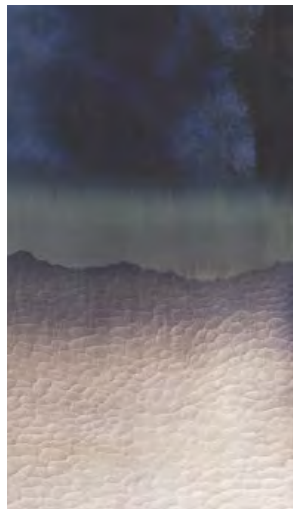
Soffioni 74



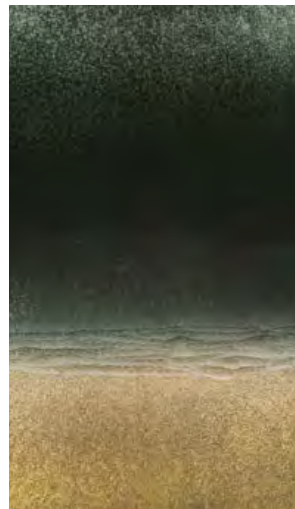
Tuscany 78



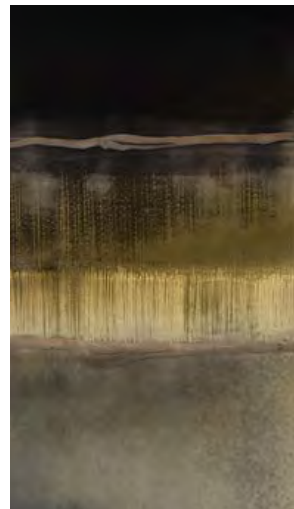
Gargano 32



Stromboli 42



Etna 50



Lipari 56



Volterra 84



Salento 90

Melt Transparent / Fuso Trasparente

Transparent surfaces 98



Partially Silvered



Turquoise



Aquamarine



Dark green



Cobalt Blue



Midnight Blue



Lead grey



Bronze



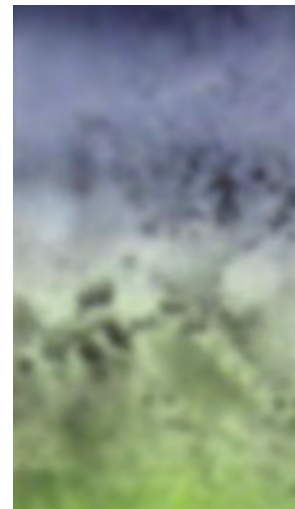
Gold



Pink-Cobalt Blue



Green-Midnight Blue



Matt Green-Midnight Blue

Melt Mirrored / Fuso Specchiato

Mirrored surfaces 99



Medium Antiqued



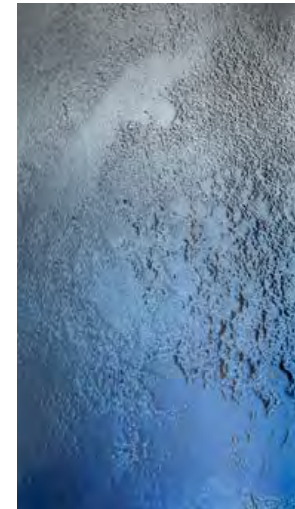
Turquoise



Aquamarine



Dark green



Cobalt blue



Midnight blue



Bronze



Gold



Pink-Cobalt Blue



Nightfall

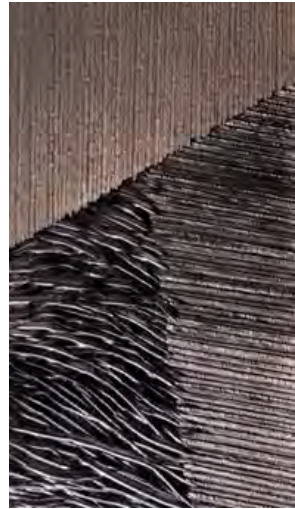


Forest



Autumn

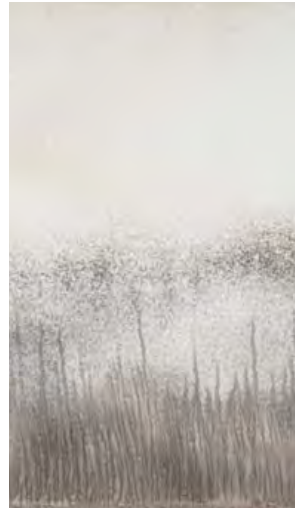
Eclectic Visions /
Visioni Eclettiche



Sub Umbra Dark 122



Sub Umbra Light 122



Caigo 130



Marco Polo 136



Cosmos 190



Fragment 190



Deep Blue 142



Stripes 148



Paradiso 152



Edera 158



Universe 191



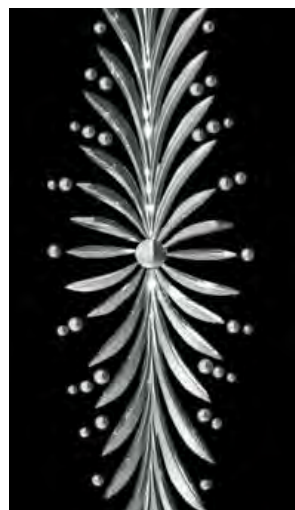
Threshold 191



Posidonia 164



Shogun Flower 170



Fiammante 176



Good Mood Reboot 182

Italian Landscapes / Paesaggi Italiani

LANGHE

design Giovanni Luca Ferreri

La Morra, sandblasted and partially silvered extra-clear glass. *Barbaresco*, extra-clear baked glass with pure poured silver. *Neive*, extra-clear baked and sandblasted glass with pure poured silver. *Roddi*, extra-clear baked and sandblasted glass, engraved on the edge and partially silvered.

La Morra, vetro extra-chiaro opaco sabbiato e parzialmente argentato. *Barbaresco*, vetro extra-chiaro cotto con argento colato. *Neive*, vetro extra-chiaro cotto e sabbiato con argento colato. *Roddi*, vetro extra-chiaro cotto e sabbiato, inciso sul bordo e parzialmente argentato.

Barbaresco



La Morra



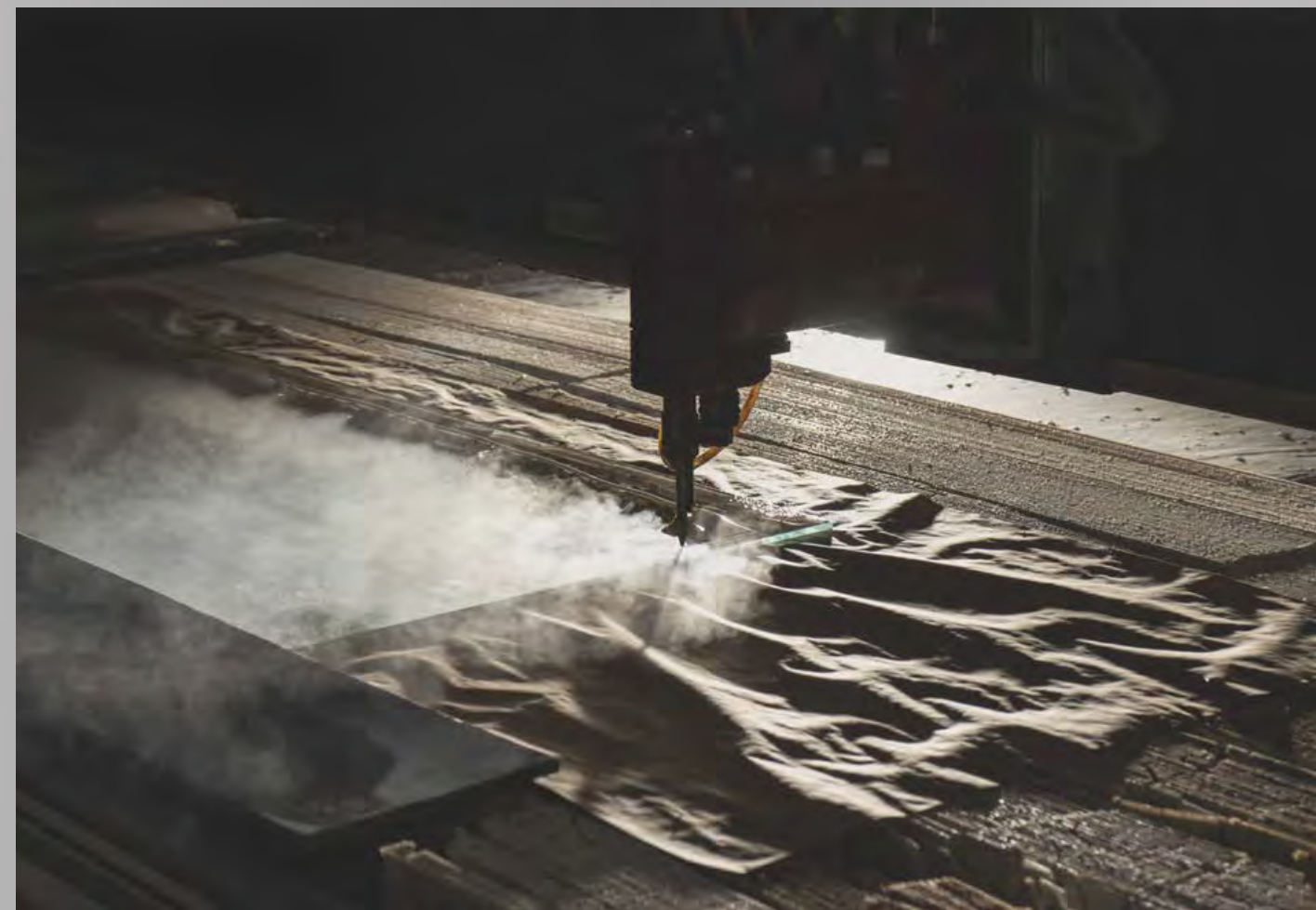
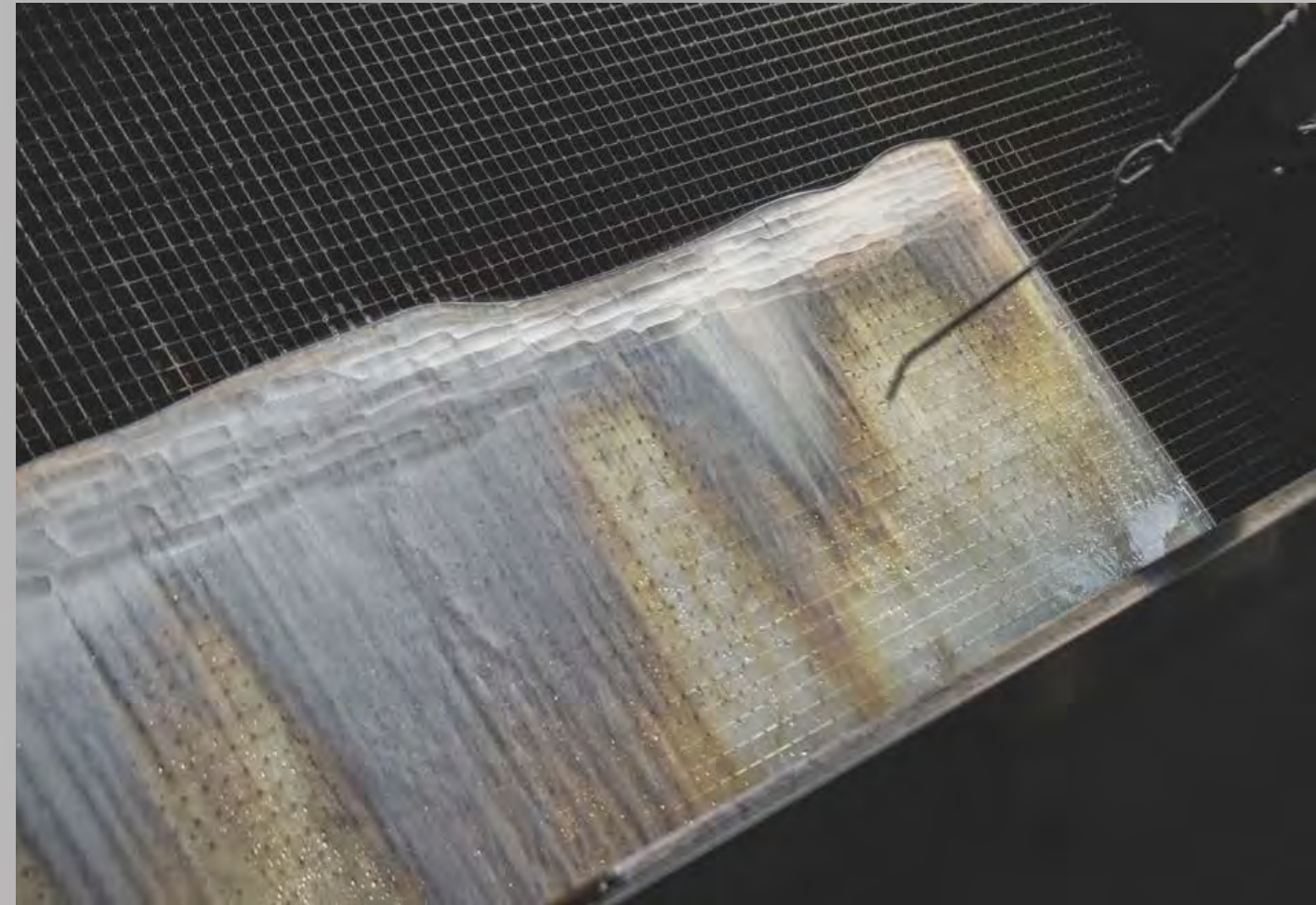
Neive



Roddi









CAVE

design Giovanni Luca Ferreri

La Morra, sandblasted and partially silvered extra-clear glass. *Barbaresco*, extra-clear baked glass with pure poured silver. *Neive*, extra-clear baked and sandblasted glass with pure poured silver. *Roddi*, extra-clear baked and sandblasted glass, engraved on the edge and partially silvered.

La Morra, vetro extra-chiaro opaco sabbiato e parzialmente argentato. *Barbaresco*, vetro extra-chiaro cotto con argento colato. *Neive*, vetro extra-chiaro cotto e sabbiato con argento colato. *Roddi*, vetro extra-chiaro cotto e sabbiato, inciso sul bordo e parzialmente argentato.

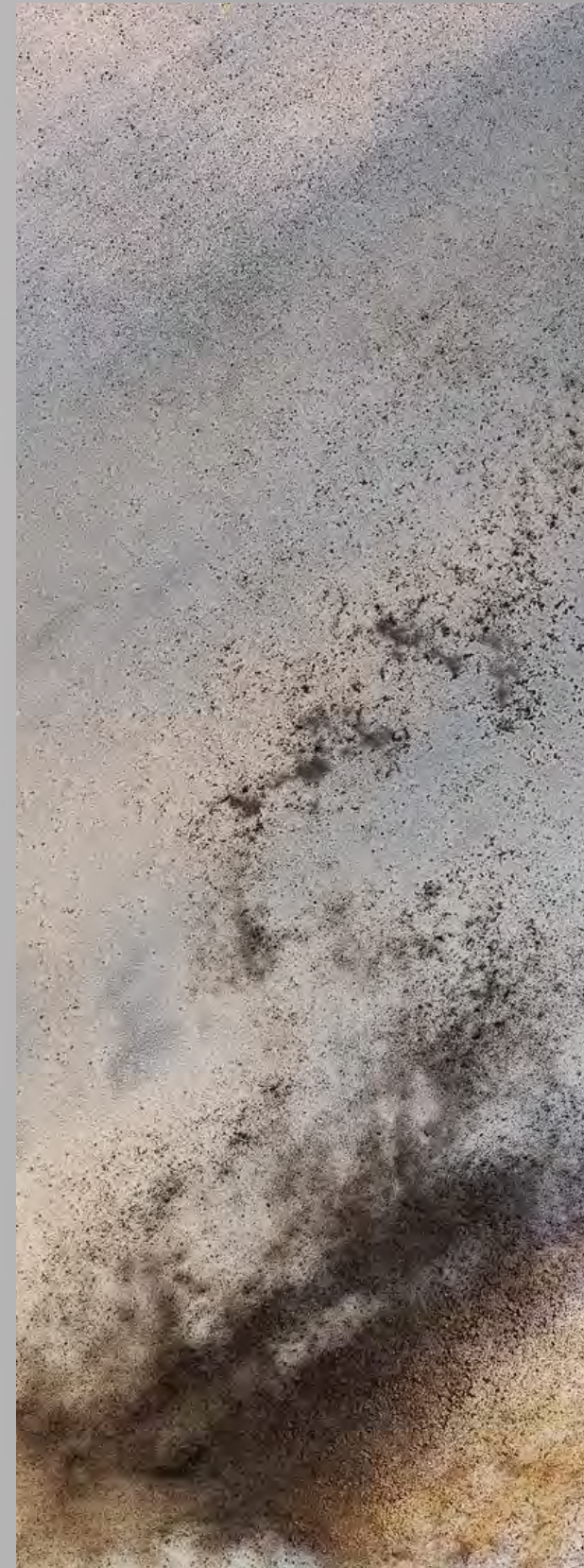
Fondale #01



Fondale #02



Fondale #03



Fondale #04







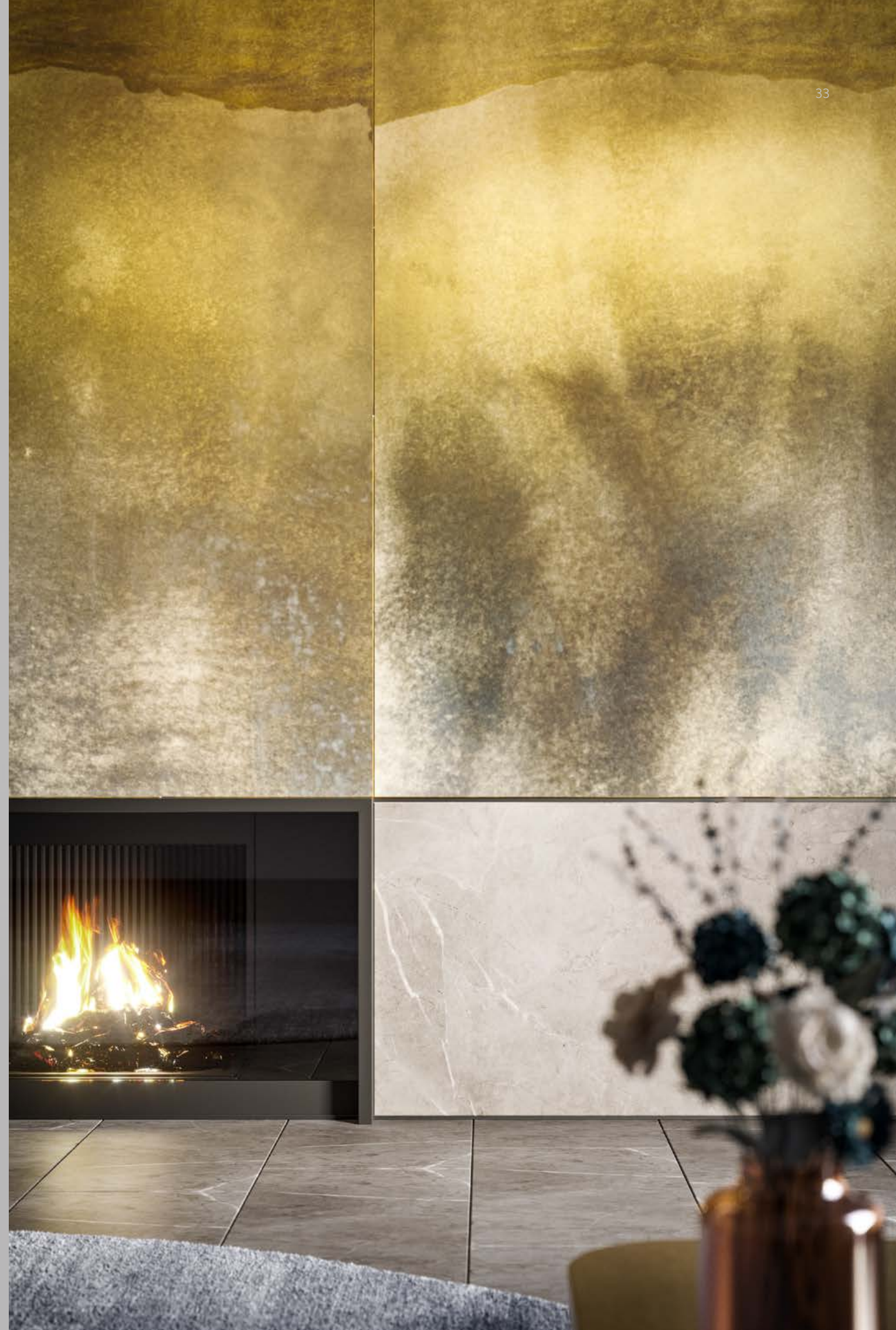


GARGANO

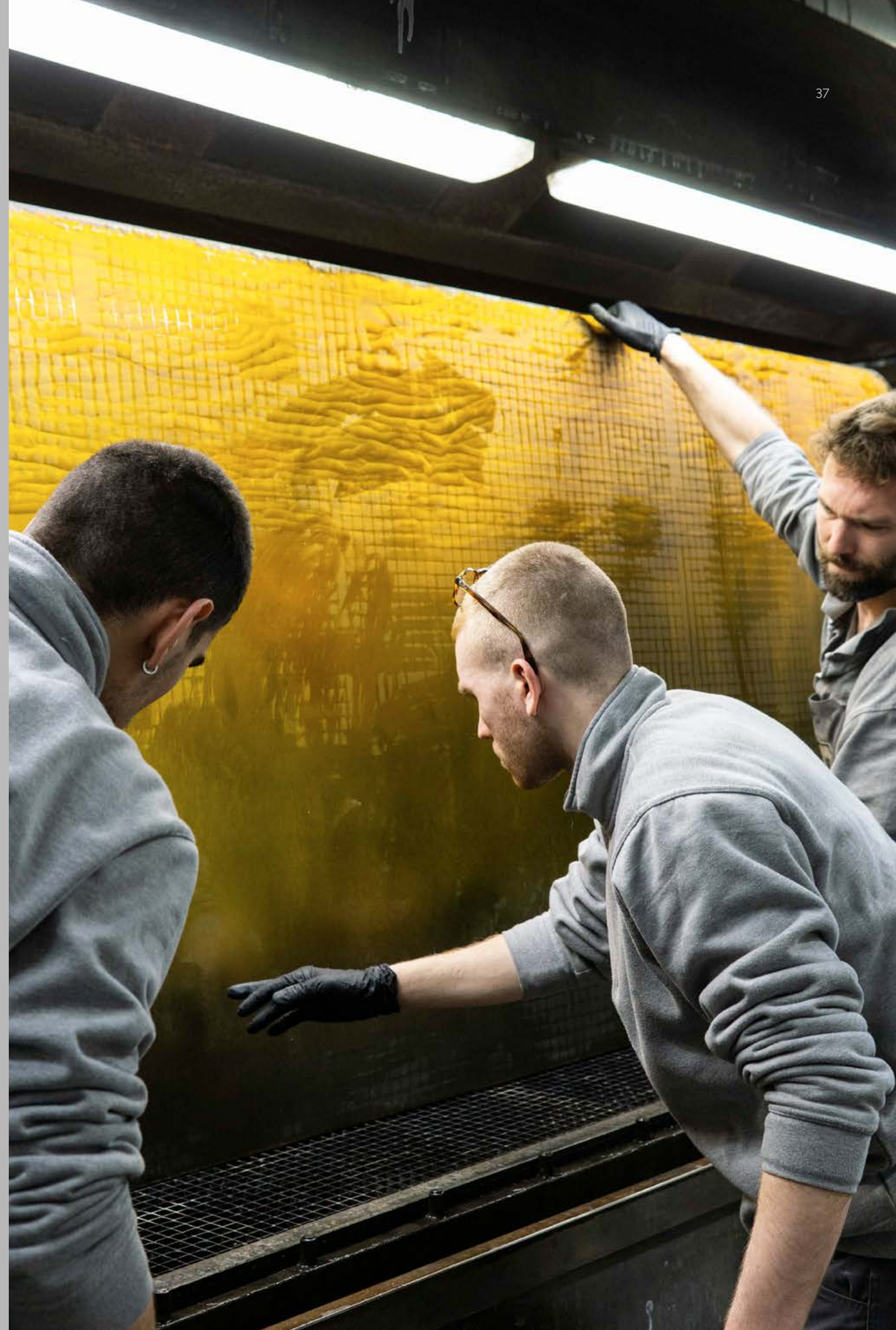
design Giovanni Luca Ferreri

Extra-clear acid-etched glass engraved and decorated with gold hues, all silvered in a heavy antique finish.

Vetro extra-chiaro acidato decorato con incisioni e sfumature di colore oro, tutto argentato con finitura antico pesante.









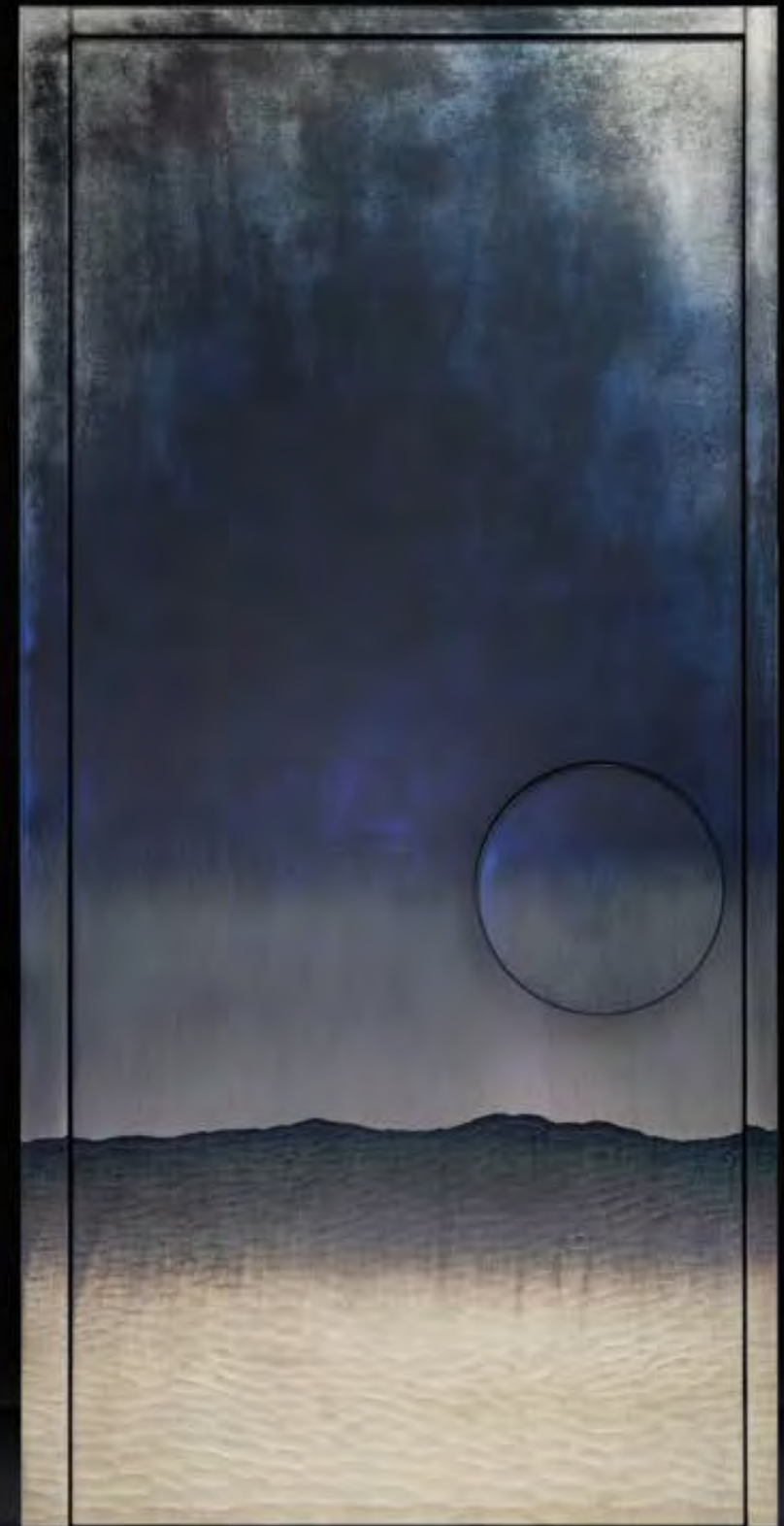


STROMBOLI

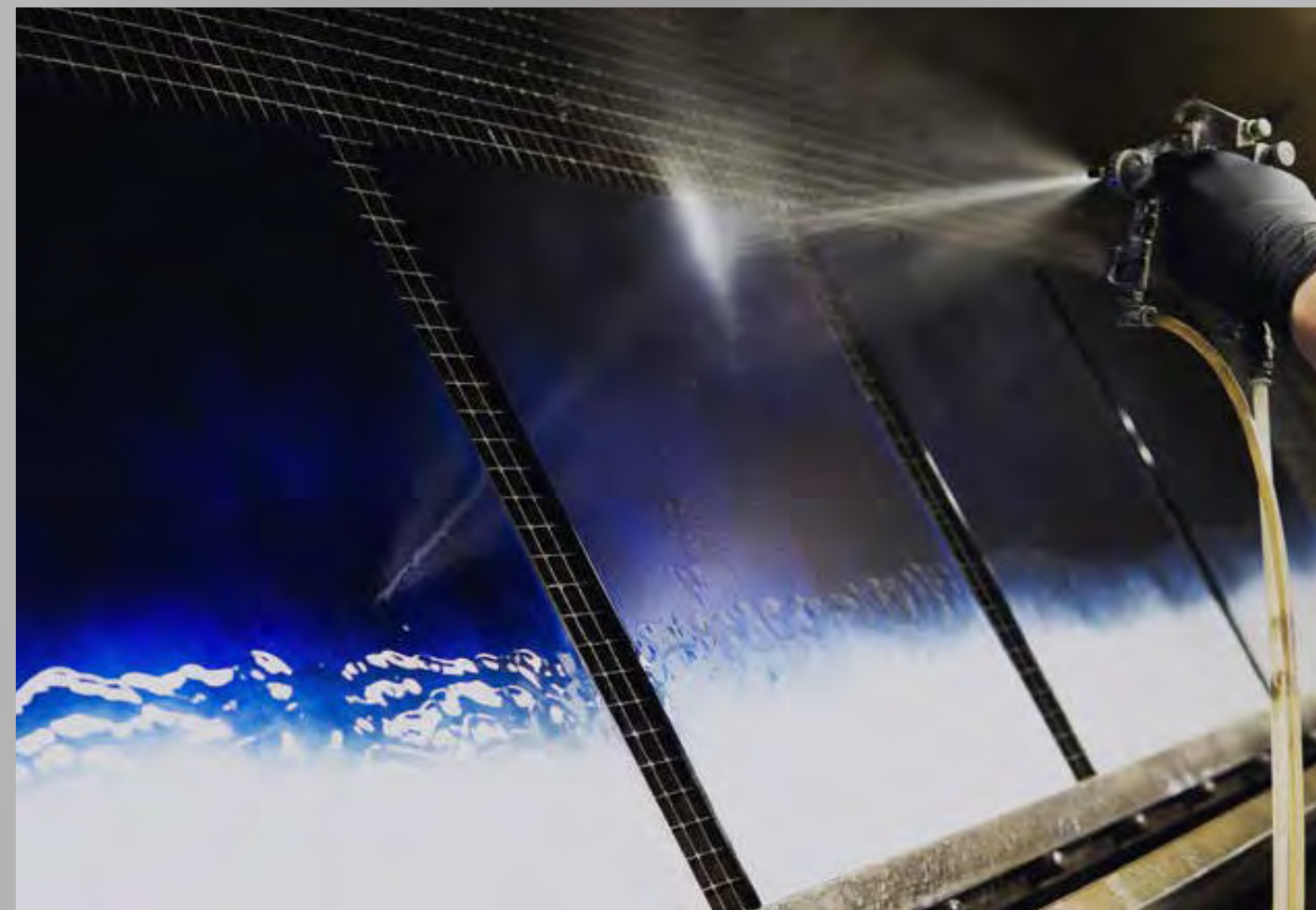
design Giovanni Luca Ferreri

Extra-clear glass with matt finish, decorated with silver engravings on the front and shaded with blue on the back, all silvered in a heavy antique finish.

Vetro extra-chiaro con finitura opaca, decorato con incisioni argentate davanti e sfumato di colore blu dietro, tutto argentato con finitura antico pesante.









ETNA

design Giovanni Luca Ferreri

Extra-clear glass decorated with engravings in the centre and shaded with teal and gold hues, all silvered in a heavy antique finish.

Vetro extra-chiaro decorato con incisioni al centro e sfumature di colore ottanio e giallo oro, tutto argentato con finitura antico pesante.





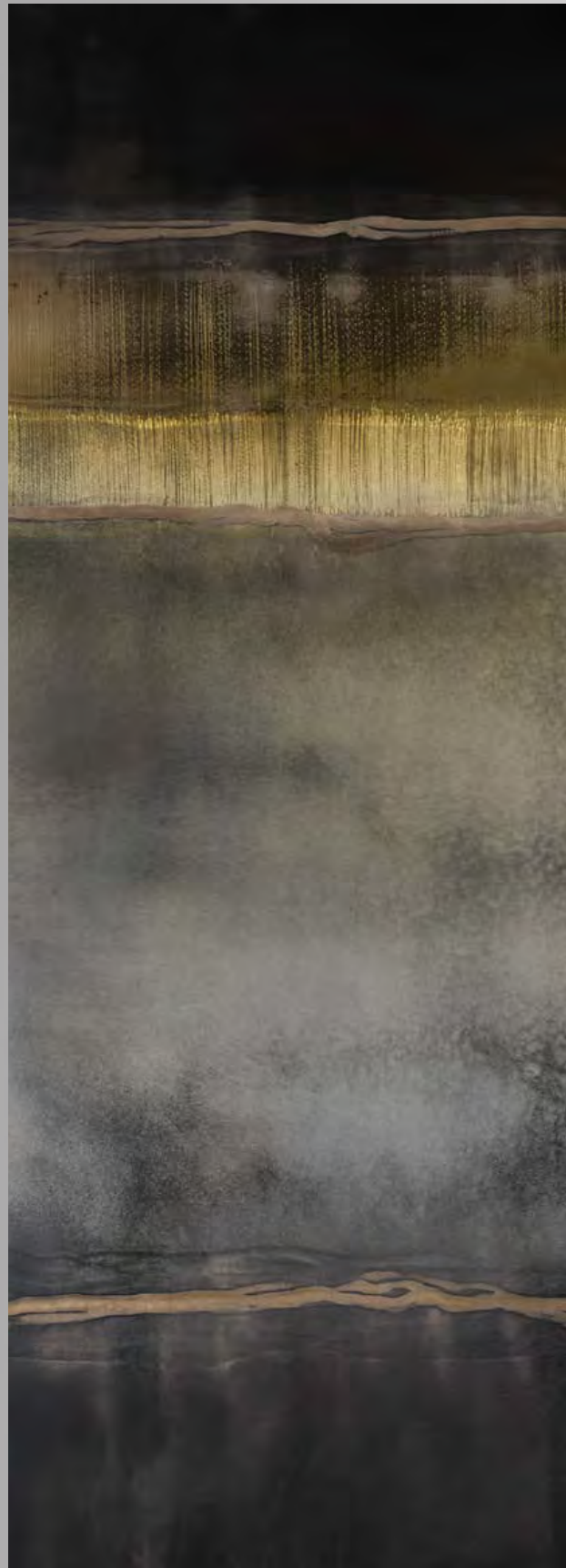


LIPARI

design Giovanni Luca Ferreri

Extra-clear acid-etched glass decorated with engravings and partially shaded golden yellow, all silvered in a heavy antique finish.

Vetro extra-chiaro acidato decorato con incisioni e sfumato parzialmente di colore giallo oro, tutto argentato con finitura antico pesante.







GIRGENTI

design Giovanni Luca Ferreri

Extra-clear glass decorated with white and khaki hues on a scratched gold leafed design, all silvered in a heavy antique finish.

Vetro extra-chiaro decorato con sfumature di colore bianco e verde militare su motivo a foglia oro graffiato, tutto argentato con finitura antico pesante.







VENDICARI

design Giovanni Luca Ferreri

Extra-clear glass decorated with black hues on gold leaf, shaded gold and silvered in a medium antique finish.

Vetro extra-chiaro decorato con pennellate di colore nero su motivo a foglia oro. Tutto sfumato oro e argentato con finitura antico pesante.







SOFFIONI

design Giovanni Luca Ferreri

Extra-clear glass engraved on the front with diamond pen and decorated on the back with puffball designs with gold leaf, white and blue, all shaded in black and silvered in a heavy antique finish.

Vetro extra-chiaro inciso davanti con penna a diamante e decorato dietro a motivo di soffioni con foglia oro e colori blu e bianco, tutto sfumato di colore nero e argentato con finitura antico pesante.





TUSCANY

design Giovanni Luca Ferreri

Extra-clear glass decorated with green, blue, turquoise and white on a gold leaf design.

Vetro extra-chiaro decorato con colorazioni verde, blu, turchese e bianco su motivo a foglia oro.







VOLTERRA

design Giovanni Luca Ferreri

Extra-clear acid-etched glass decorated with dark-blue, olive-green and white hues on gold leaf designs, all silvered in a heavy antique finish.

Vetro extra-chiaro acidato decorato con colori blu scuro, verde oliva e bianco su motivo a foglia oro, tutto argentato con finitura antico pesante.







SALENTO

design Giovanni Luca Ferreri

Extra-clear acid-etched glass decorated with white spatula technique and dark blue with golden yellow hues, all silvered in a heavy antique finish.

Vetro extra-chiaro acidato decorato con colorazioni di bianco spatolato e blu scuro, tutto sfumato di colore giallo oro e argentato con finitura antico pesante.







Melt /

Fuso

MELT

design Leo De Carlo

Baked glass in two layers with irregular edges, 10-15 mm thick. All decorated in dégradé colours partially or totally silvered on the back.

Visit the website for the whole palette.

Vetro cotto in due strati con bordi irregolari, spessore 10-15 mm. Il tutto verniciato con colori in dégradé parzialmente o totalmente argentati sul retro.

Consulta il sito per l'intera palette.

Aquamarina Gradient (Transparent Finish)



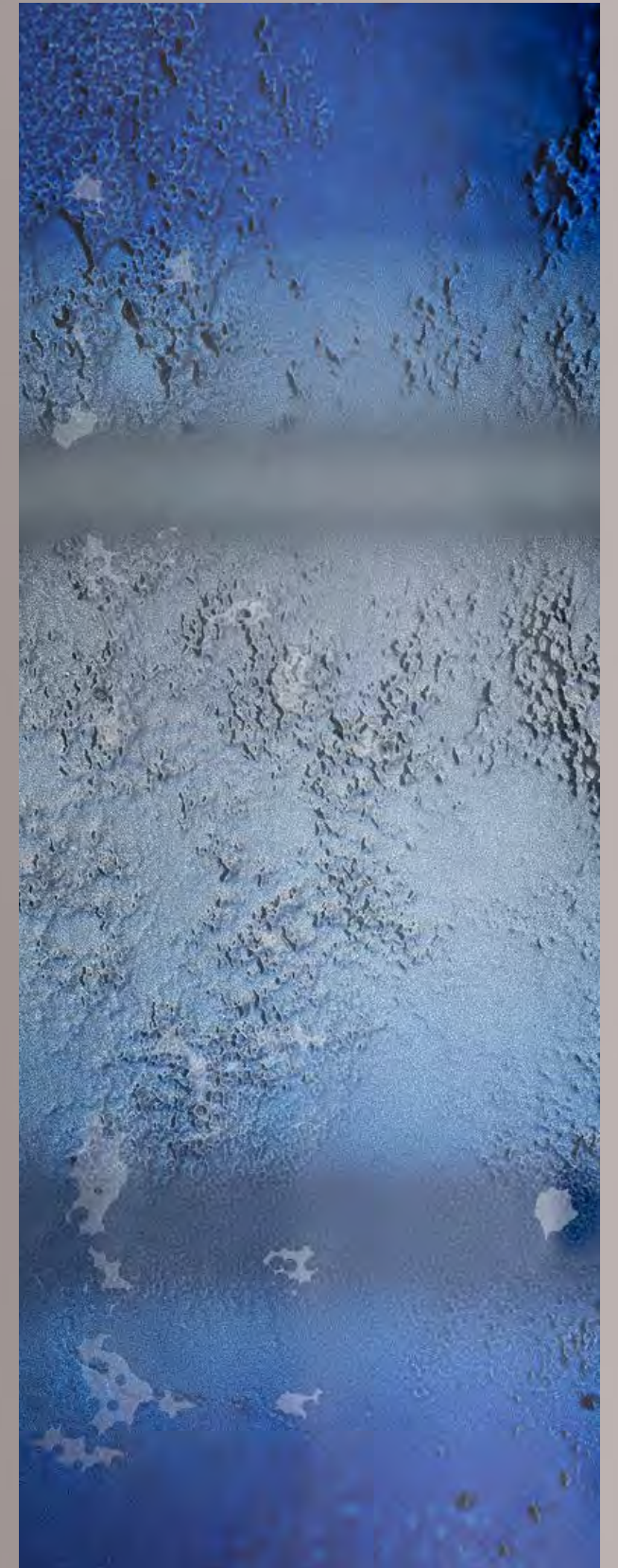
Bronze Gradient (Transparent Finish)



Midnight Blue Gradient (Not Transparent Finish)



Nightfall Gradient (Not Transparent Finish)























Eclectic Visions / Visioni Eclettiche

SUB UMBRA

design Tristan Auer

Extra-clear glass with engravings of varying width made on both sides, varnished and silvered with varying intensities of antiquing depending on the version.

Vetro extra-chiaro con incisioni di larghezza variabile effettuate su ambo i lati, verniciate e argentate con intensità diverse di anticatura a seconda della versione.

Sub Umbra Dark



Sub Umbra Light









CAIGO

design Arte Veneziana

Extra-clear acid-etched glass decorated on the back with a shaded finish ranging from non-antique to heavy antique. Front hand engraved with a diamond wheel in an abstract artistic pattern.

Vetro extra-chiaro acidato decorato sul retro con finitura sfumata da non antico ad antico pesante. Frontale inciso a mano con mola diamantata con motivo artistico astratto.







MARCO POLO

design Giovanni Luca Ferreri

Extra-clear black glass, hand-decorated with silvered diamond pen engravings inspired by Marco Polo motifs.

Vetro nero extra-chiaro decorato con incisioni a penna diamantata argentate ispirate ai motivi Marco Polo.







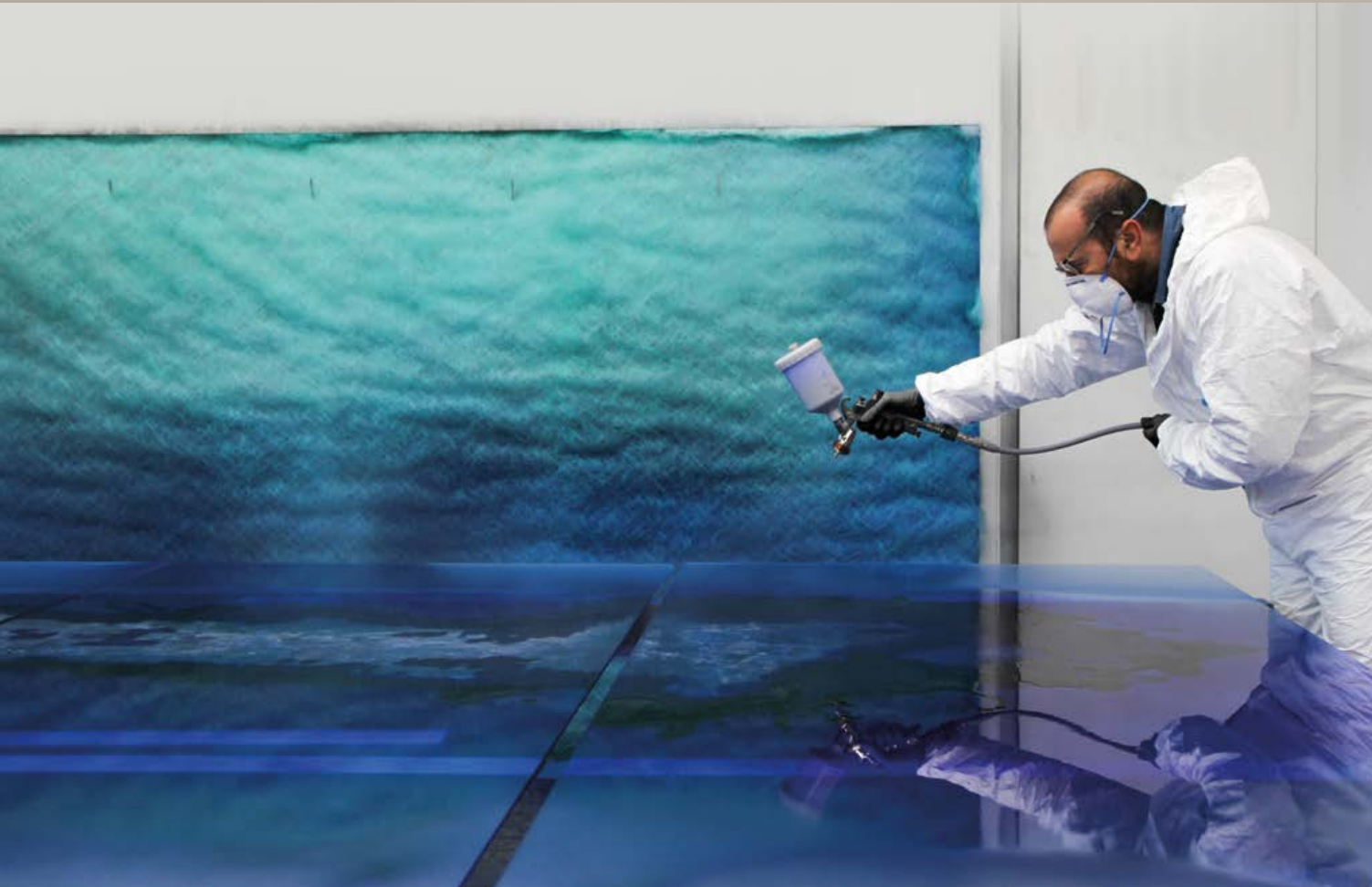
DEEP BLUE

design Giovanni Luca Ferreri

Extra-clear glass with gold leafed and scratched decor, with various light-blue and dark-blue varnish hues silvered with heavy antique mirrored finish.

Vetro extra-chiaro con decori in foglia d'oro e graffiati, con varie tonalità di vernice azzurra e blu scuro argentato a specchio anticato pesante.







STRIPES

design Bruno Borrione

Extra-clear baked glass in two layers with irregular edges, 10 mm thick. All painted with stripes front and back with different colors and partially silvered.

Vetro extra-chiaro cotto in due strati con bordi irregolari, spessore 10 mm. Il tutto verniciato a strisce fronte-retro con diversi colori e parzialmente argentato.





PARADISO

design Leo De Carlo

Extra-clear acid-etched glass engraved with a pen on the front and back and partially decorated behind with blue. All painted with gold and silvered with heavy antique finish.

Vetro extra-chiaro acidato inciso a penna sul fronte e retro e decorato parzialmente dietro con blu. Tutto verniciato con oro ed argentato con antico pesante.







EDERA

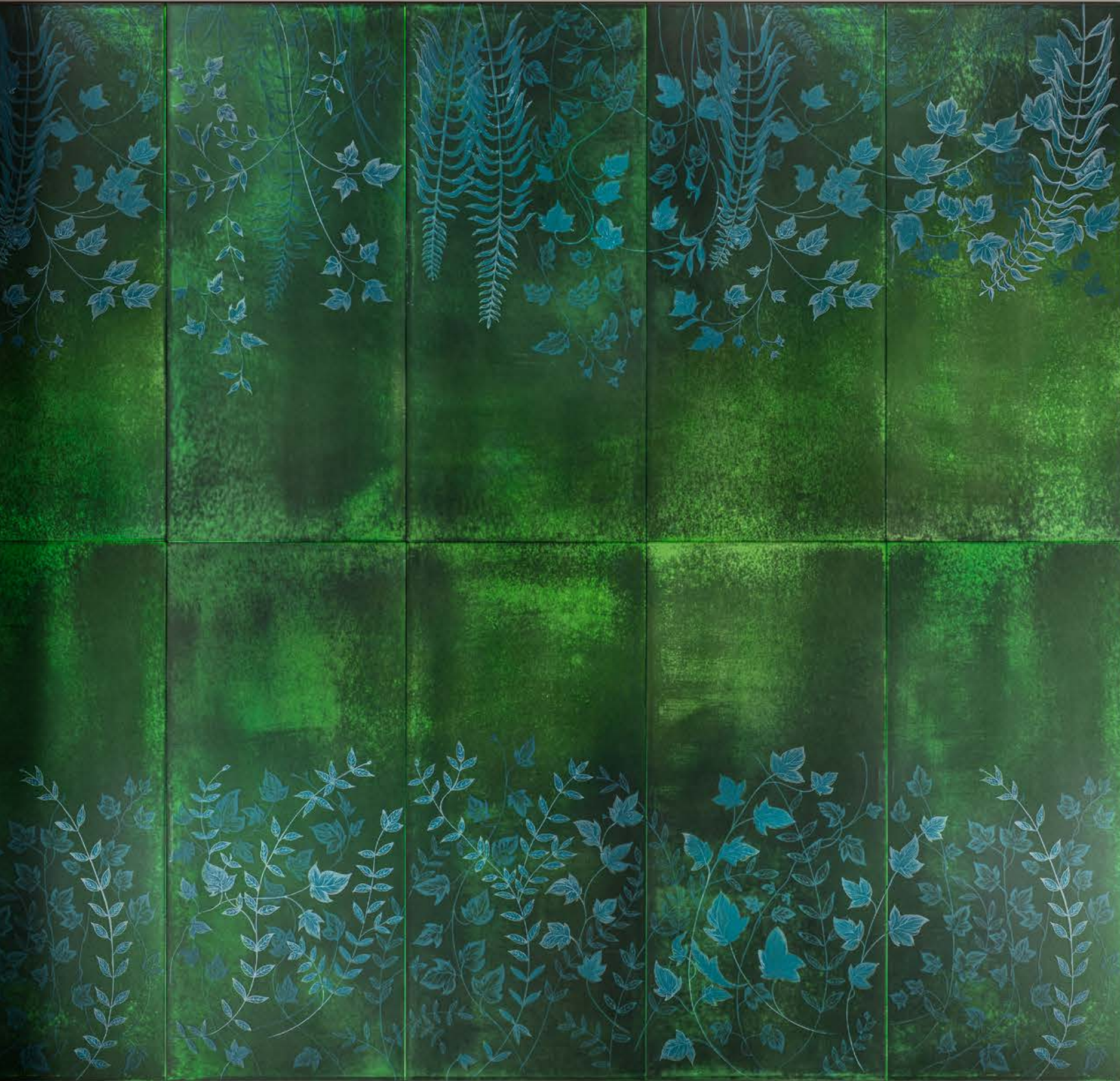
design Leo De Carlo

Extra-clear acid-etched glass engraved with a pen on the front and decorated with blue on the back. All painted with green and silvered with heavy antique.

Vetro extra-chiaro acidato inciso a penna sul fronte e decorato dietro con blu. Tutto verniciato con verde ed argentato con antico pesante.







POSIDONIA

design Leo De Carlo

Extra-clear glass engraved with a pen on the front and decorated on the back with different colors. All silvered with heavy antique finish.

Vetro extra-chiaro inciso a penna sul fronte e decorato sul retro con diversi colori. Tutto argentato con finitura antico pesante.







SHOGUN FLOWER

design Leo De Carlo

Extra-clear glass decorated with floral motifs in different colors. All finished with silver leaf on the back.

Vetro extra-chiaro decorato con motivi floreali a diversi colori. Tutto rifinito con la foglia d'argento sul retro.





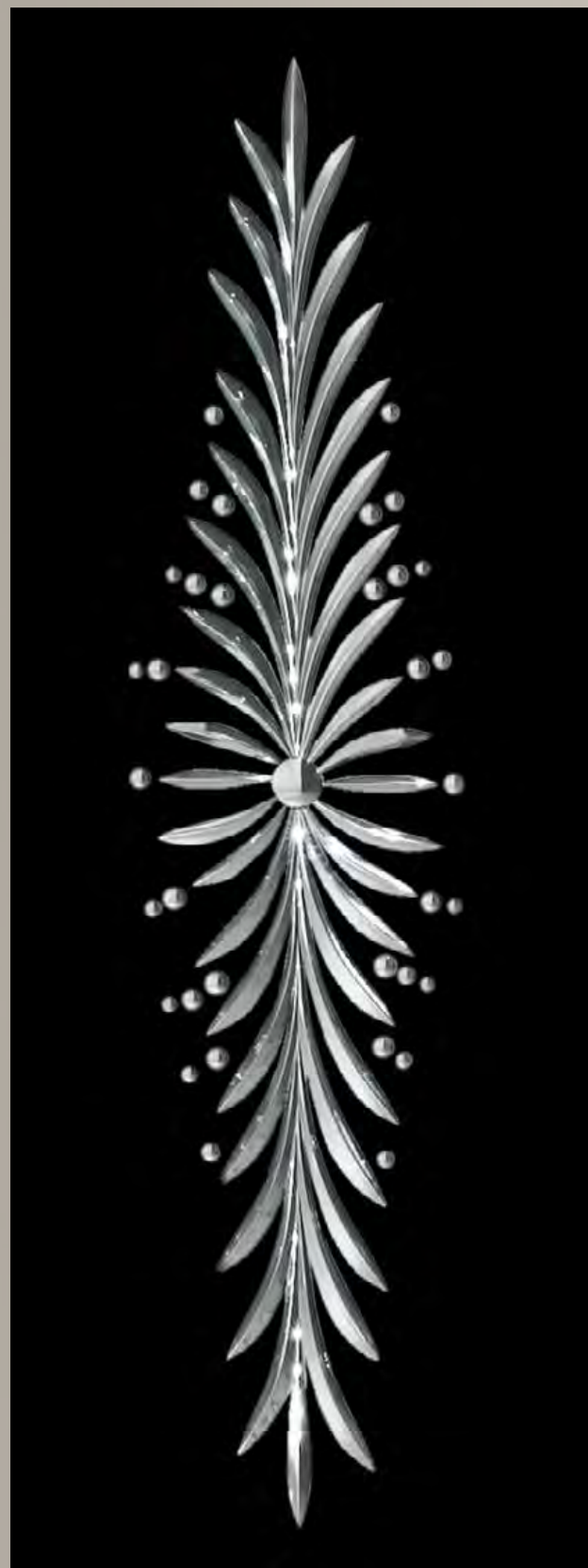


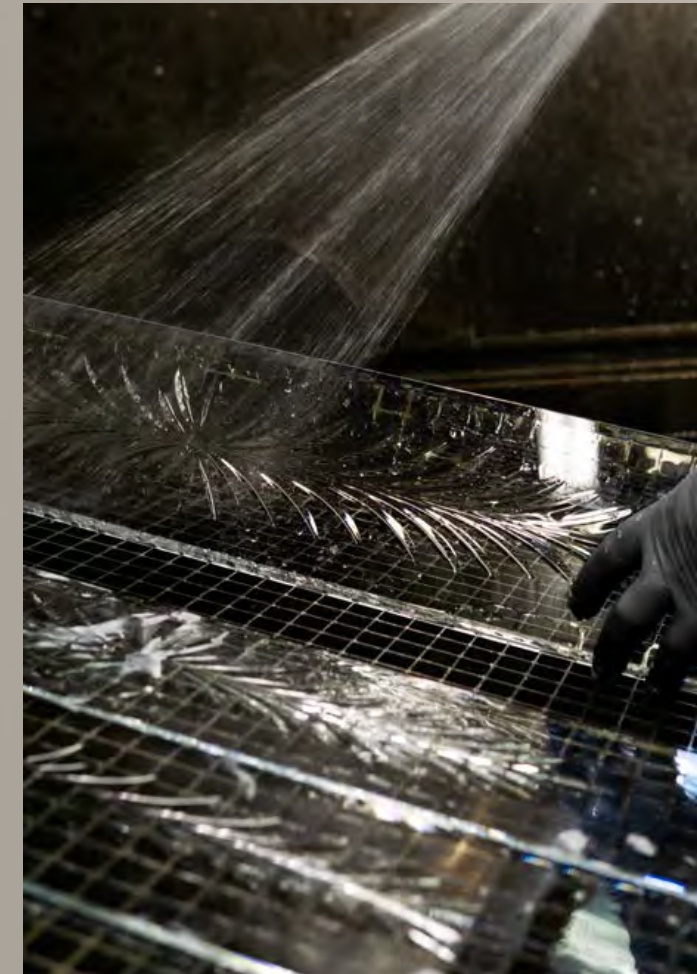
FIAMMANTE

design Leo De Carlo

Extra-clear black glass decorated with Fiammante engravings, silvered with non-antique mirror finish.

Vetro nero extra-chiaro decorato con incisioni Fiammante, argentato con finitura a specchio non anticato.





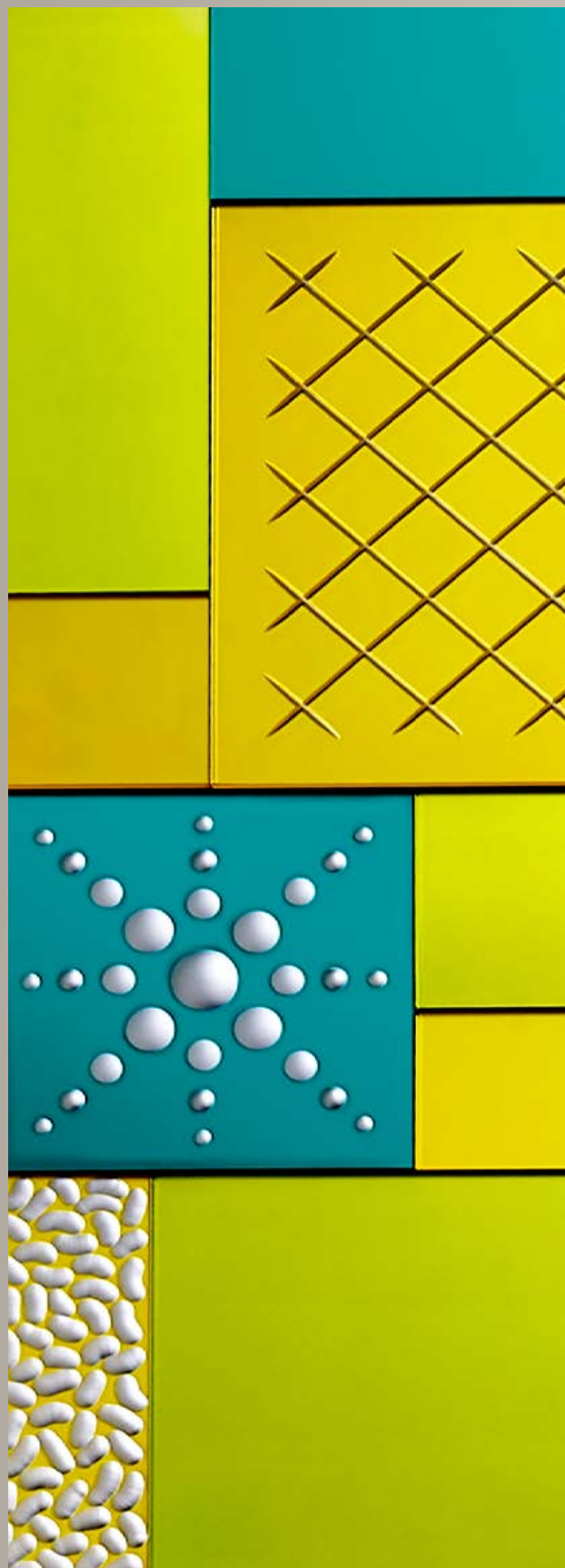


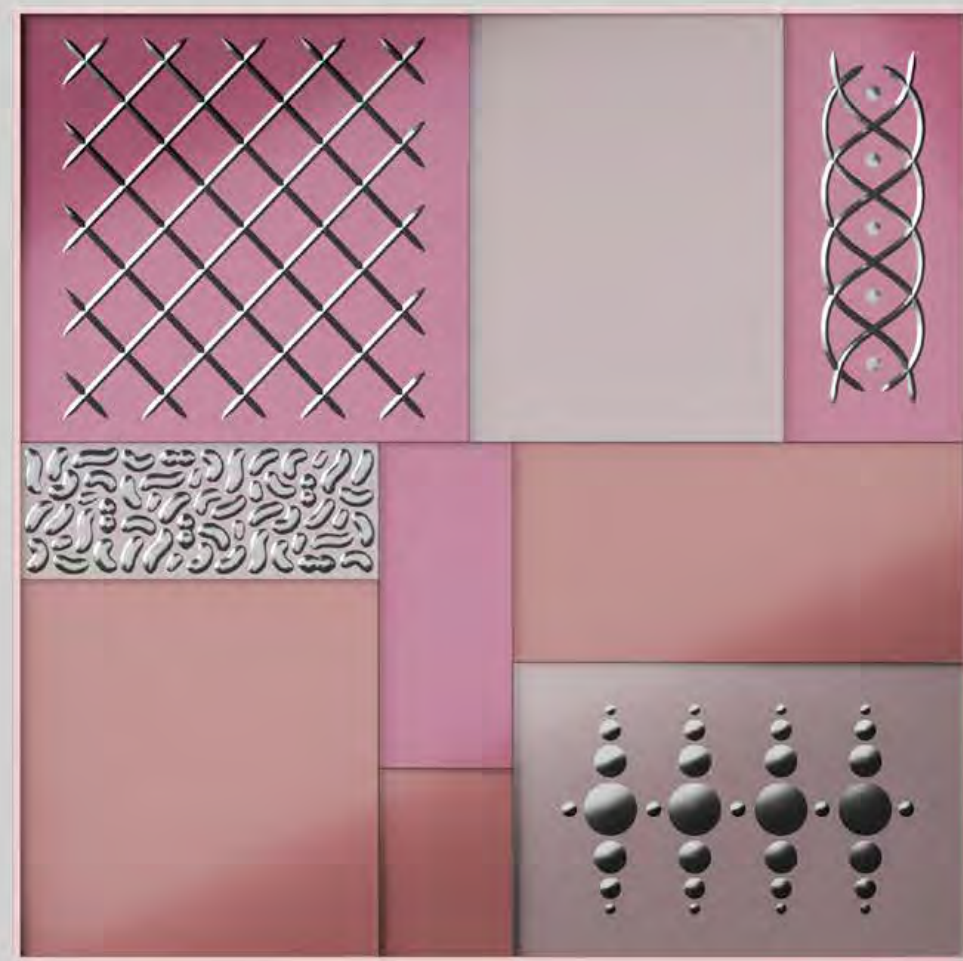
GOOD MOOD REBOOT

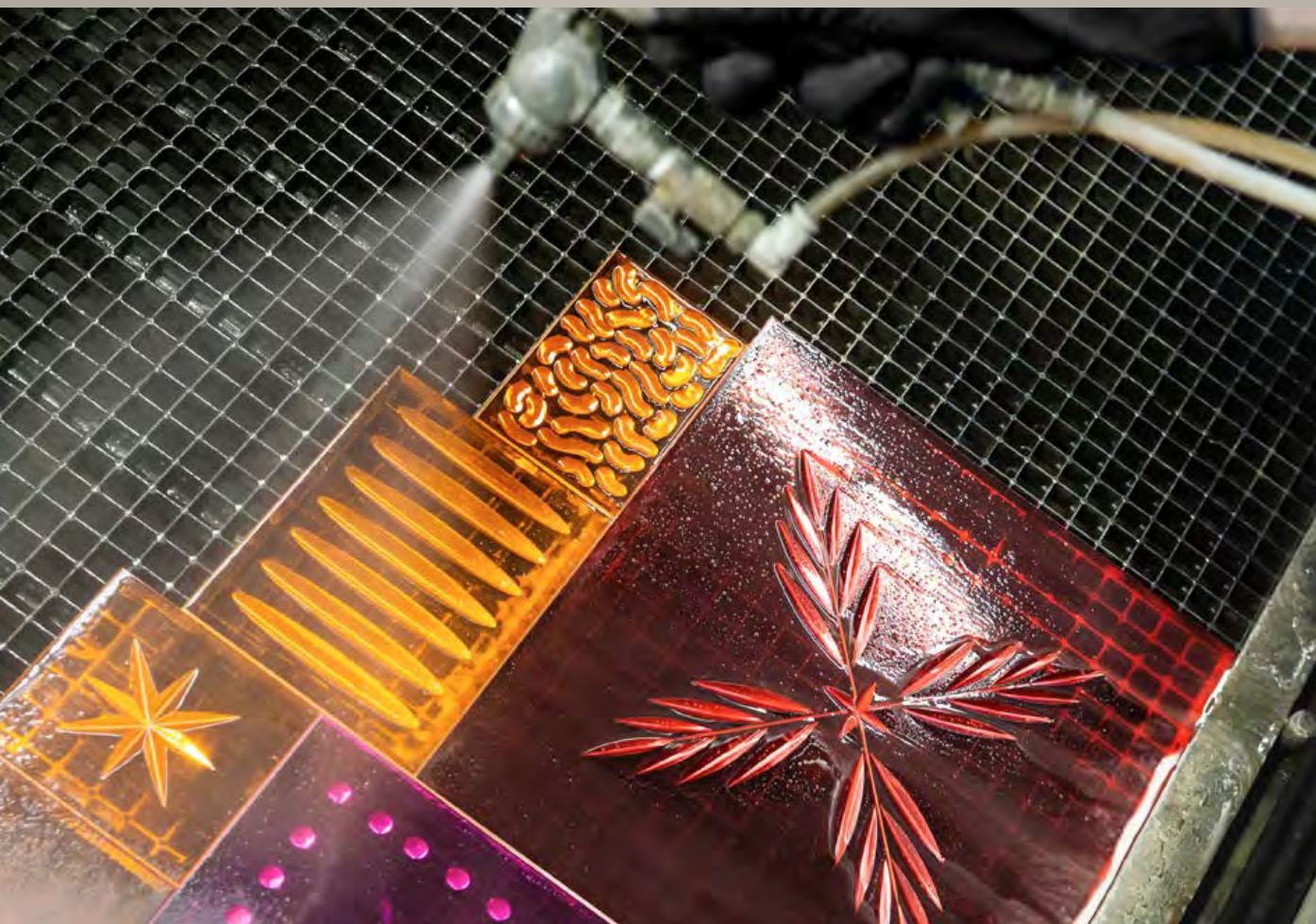
design Leo De Carlo

Extra-clear acid-etched glass painted in various colors and decorated with hand-crafted and silvered engravings.

Vetro extra-chiaro acidato verniciato con vari colori e decorato con incisioni realizzate a mano e argentate.









ORGANIC ABSTRACTION

design Tal Waldman

Multi-layered extra-clear glass panels hand-decorated in mixed technique (engravings, enamels and silver leaf) and silvered with various antique finishes.

Pannelli in vetro extra-chiaro multistrato decorato a mano con tecniche miste (incisioni, smalti e foglia d'argento) e argentato con varie finiture di antico.

Cosmos



Fragment

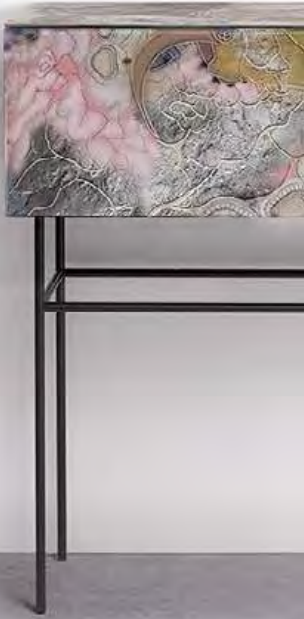


Universe



Threshold











Surfaces Library / Materioteca

Paesaggi Italiani	202
Melt Mirrored / Transparent	214
Contemporary Selection	217
Classic Selection	229



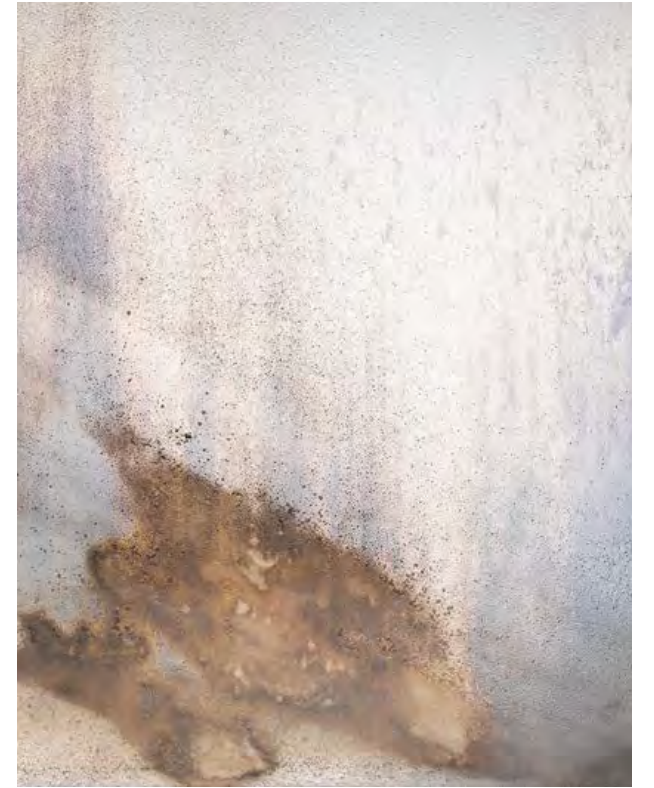
Langhe / Barbaresco



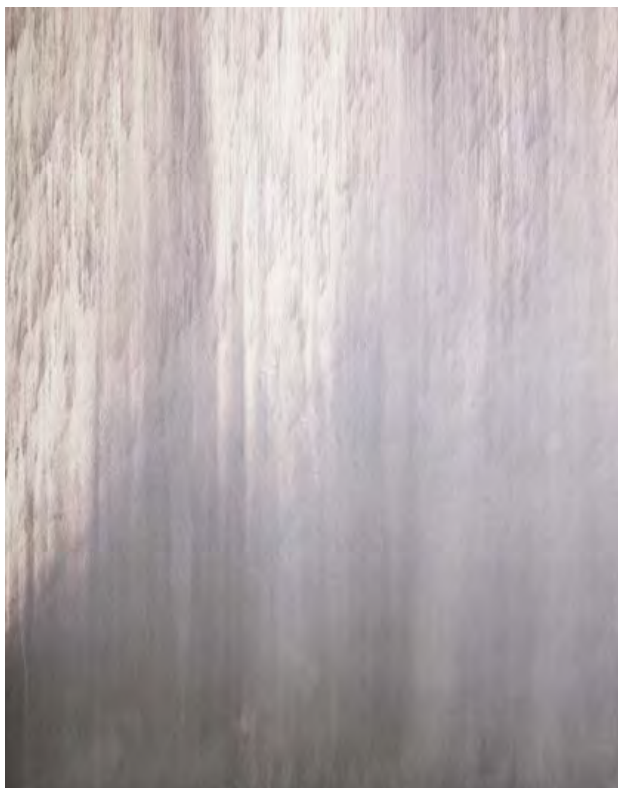
Langhe / La Morra



Cave / Fondale #01



Cave / Fondale #02



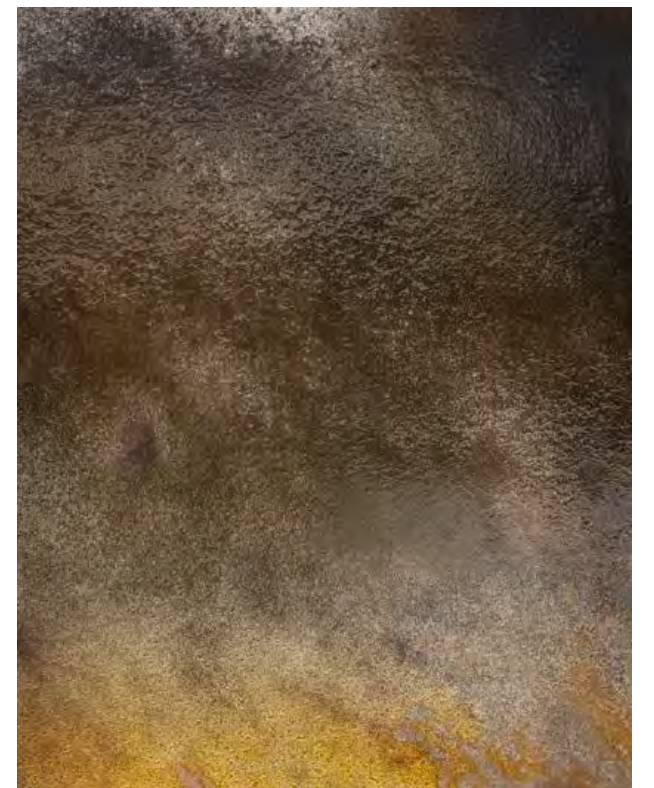
Langhe / Neive



Langhe / Roddi



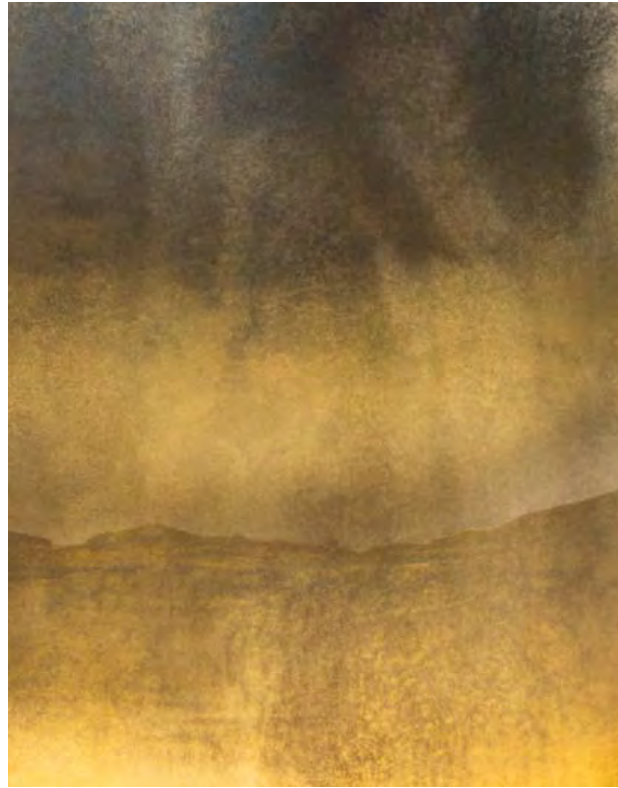
Cave / Fondale #03



Cave / Fondale #04



Lipari



Gargano



Mugello



Aquileia



Stromboli



Etna



Vulcano



Miage



Girgenti



Gran Sasso



Salento



Behind Monalisa



Vendicari



Limides



Tuscany



Massenzio



Volterra



Trieste



Girasoli



Soffioni



Laguna di Grado



Laguna di Marano



Milky Way



Storm

Italian Landscapes /
Paesaggi Italiani

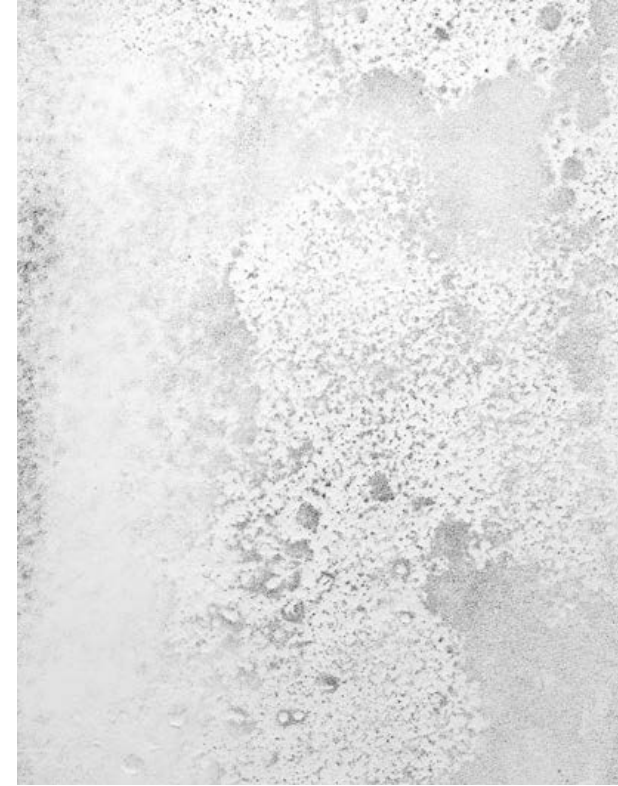
Melt Transparent /
Fuso Trasparente



Storm On The Sea



Dolomiti



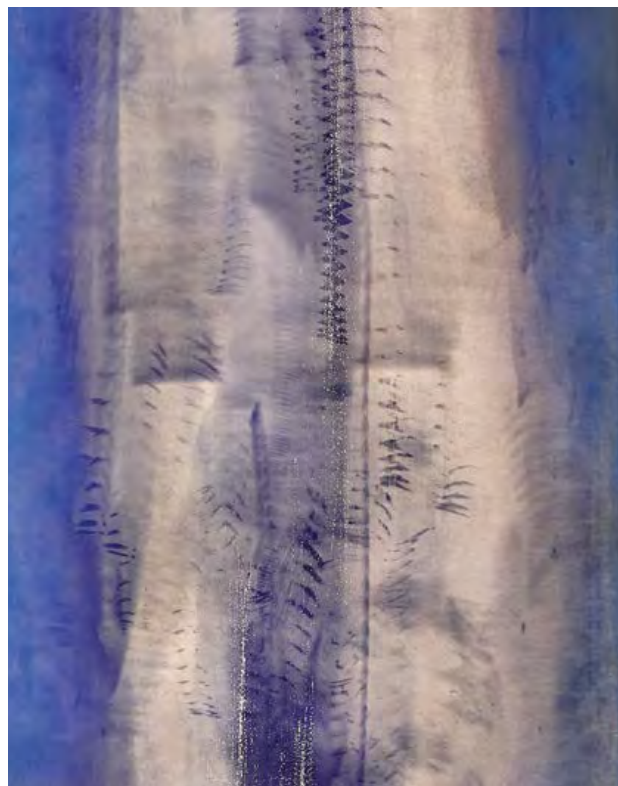
Partially Silvered



Turquoise



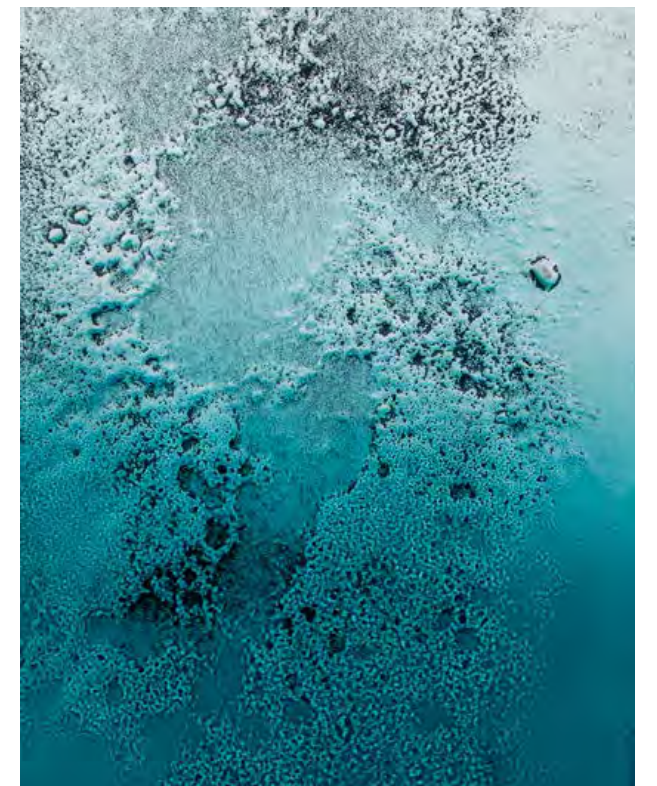
Presena



Antelao



Aquamarine Gradient



Dark Green

Melt Transparent /
Fuso Trasparente



Cobalt Blue



Midnight Blue



Turquoise



Pink-Cobalt Blue Gradient



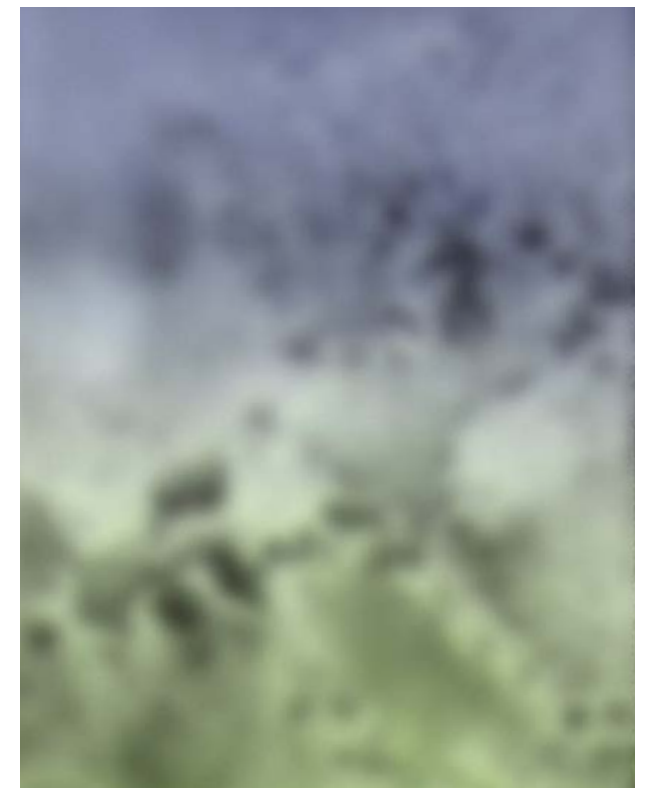
Lead Grey



Bronze

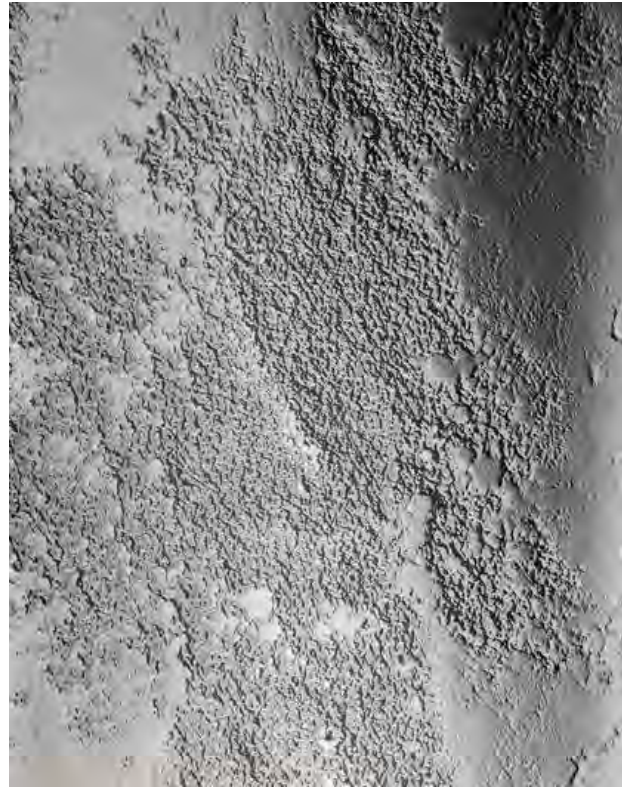


Green-Midnight Blue Gradient



*Green-Midnight Blue with matt finish

Melt Mirrored /
Fuso Specchiato



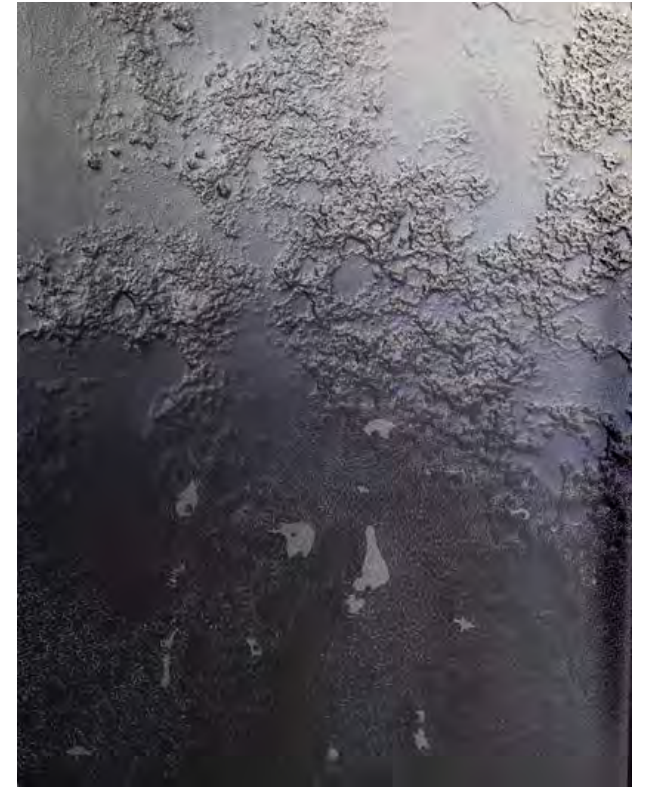
Medium antique



Turquoise Gradient



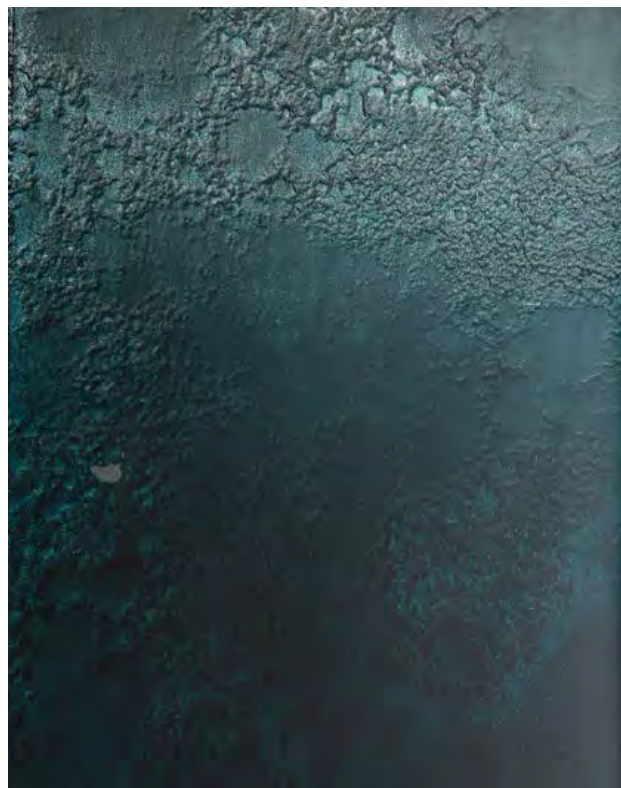
Cobalt Blue Gradient



Midnight Blue Gradient



Aquamarine Gradient



Dark Green Gradient



Bronze Gradient

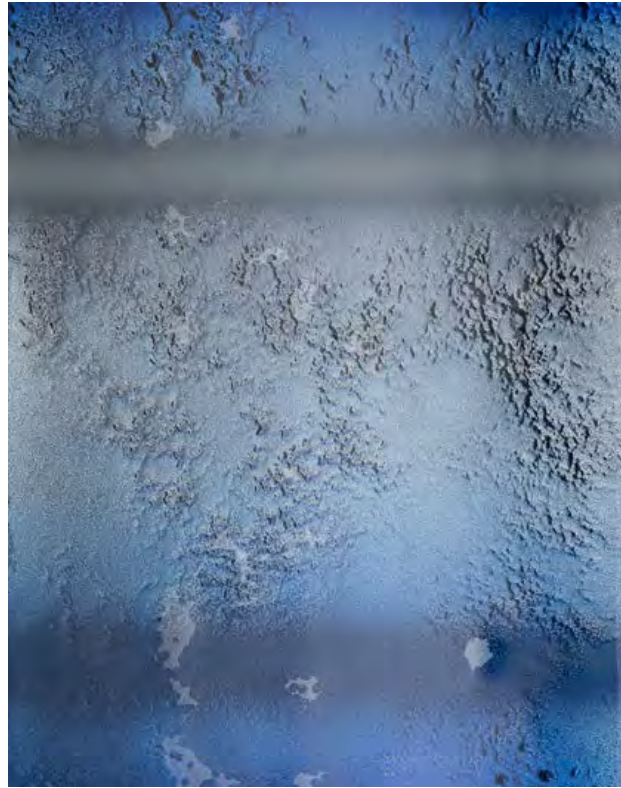


Gold Gradient

Melt Mirrored /
Fuso Specchiato



Pink-Cobalt Blue Gradient



Nightfall



Forest



Autumn

Contemporary selection /
Selezione Contemporanea



Sub Umbra Dark



Sub Umbra Light



Caigo



Millenial



Marco Polo



De Barberi



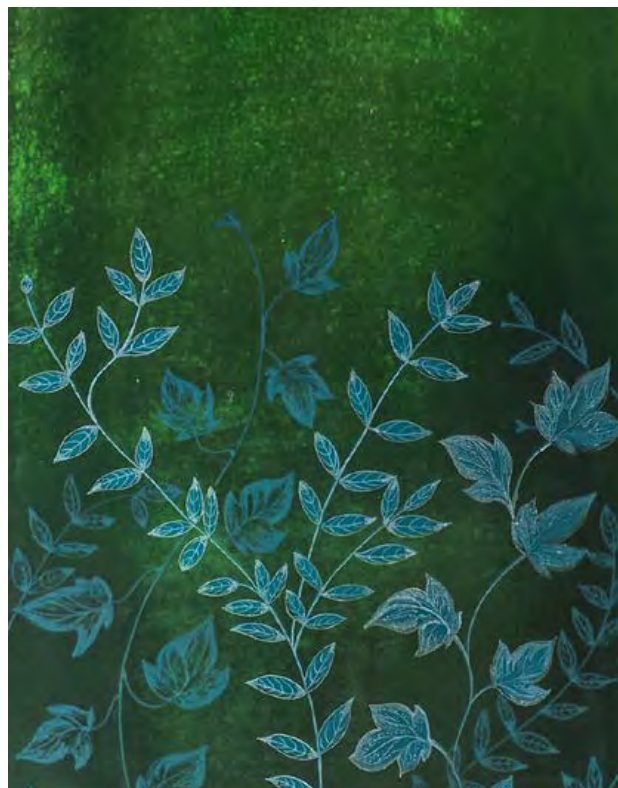
Cosmos



Fragment



Paradiso



Edera



Universe



Threshold



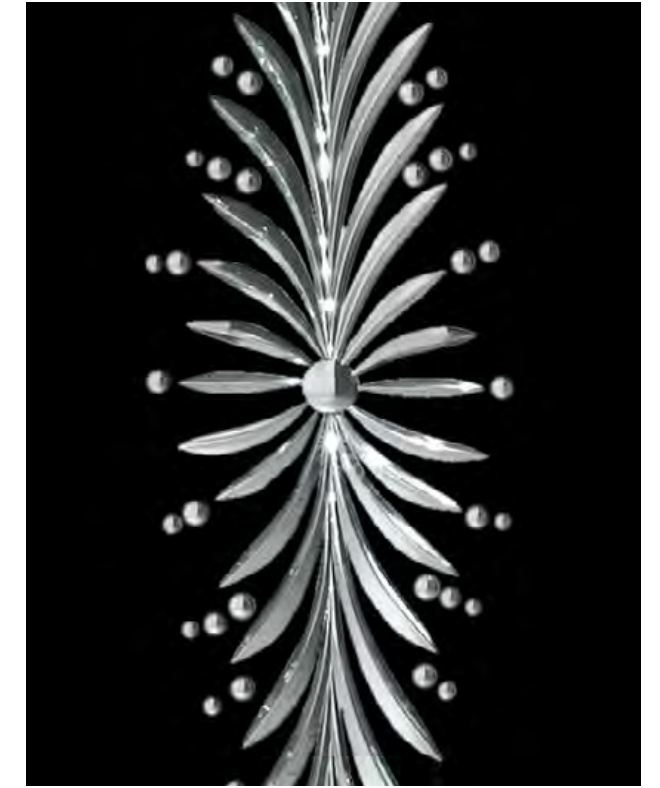
Stripes



Good Mood Reboot



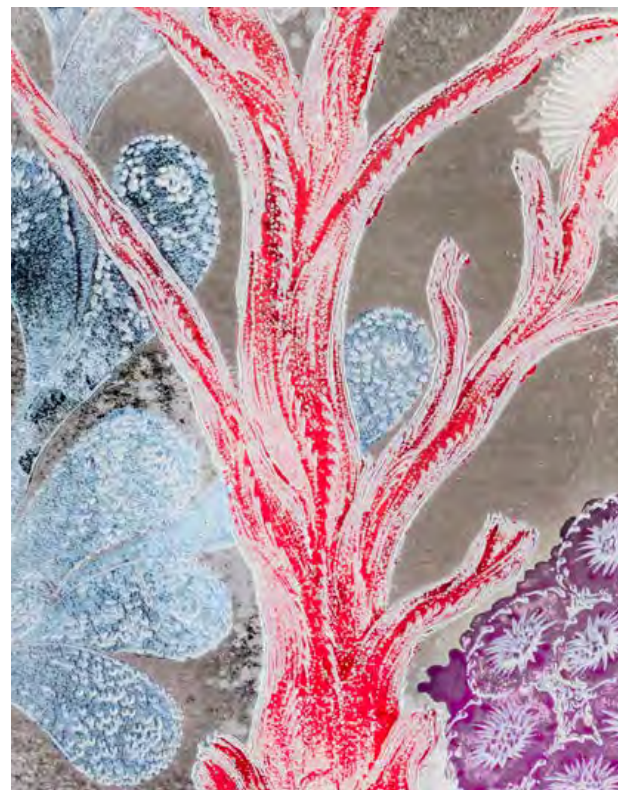
Stellata



Fiammante



Shogun Flower



Posidonia



Vattel



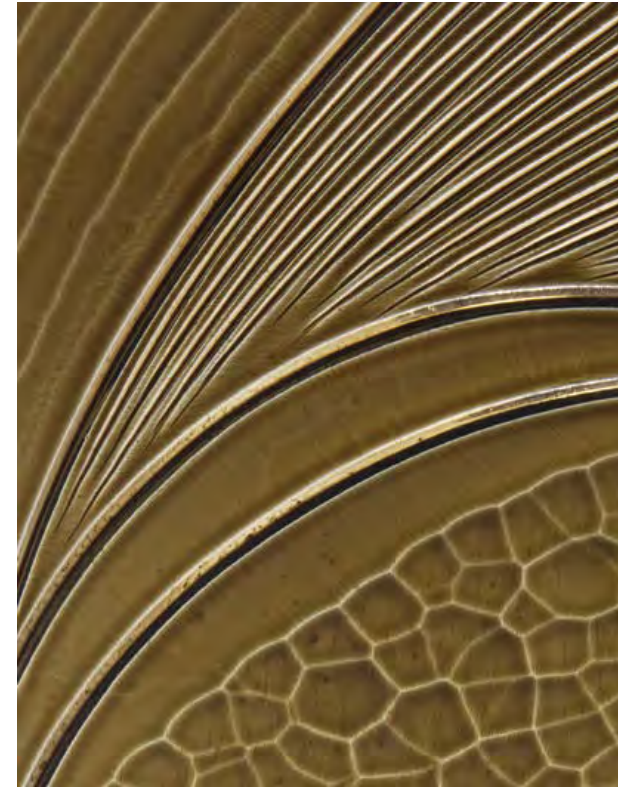
Deep Blue



Velma



Canneto



Chaliki



Leather



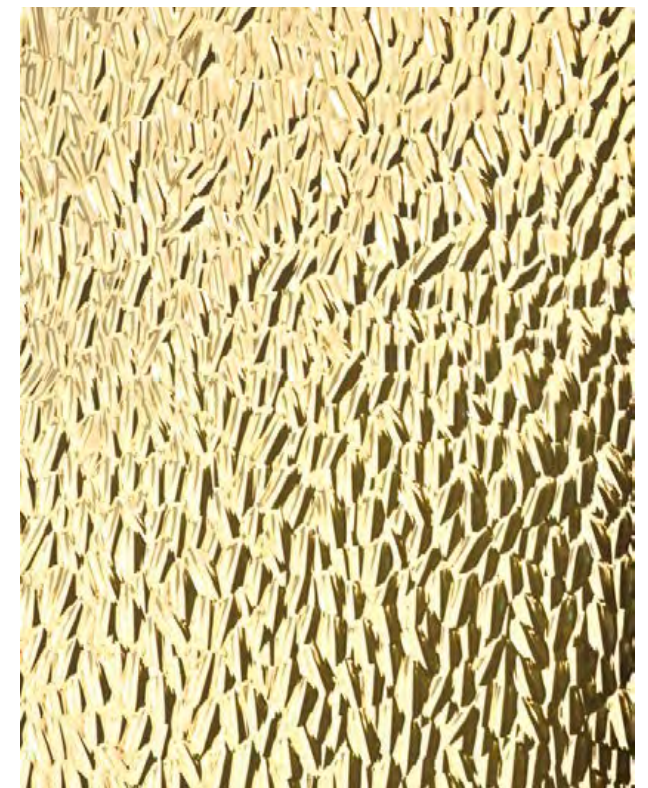
Battuto



Motus



Cloudy



Ghebo



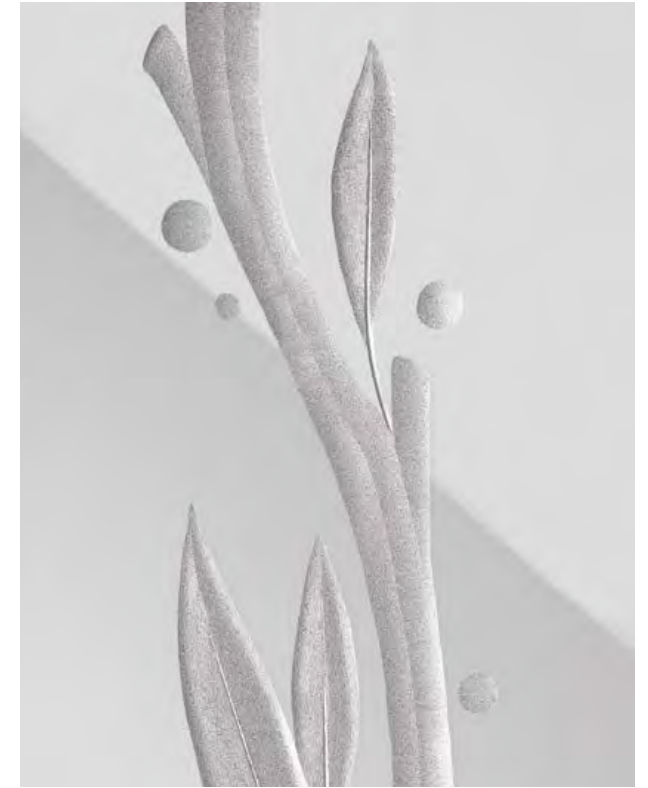
Bubble



Ponte



Bugatti



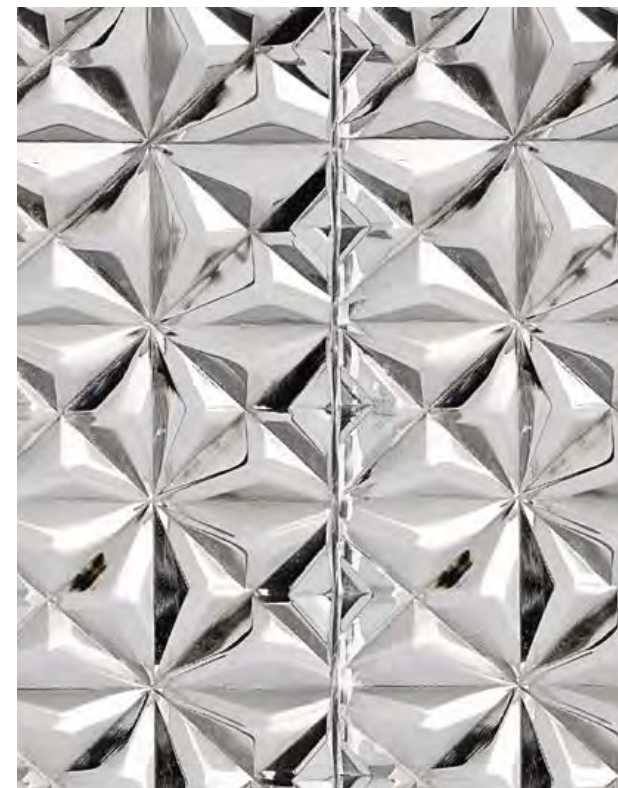
Olea



Rio



Criss Cross



Diamante



Corinzio



Littore



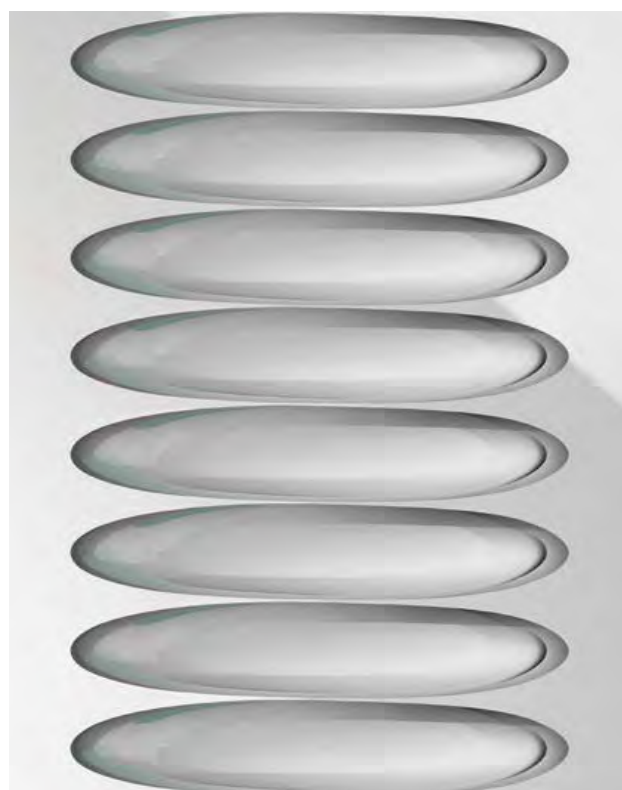
Imperium



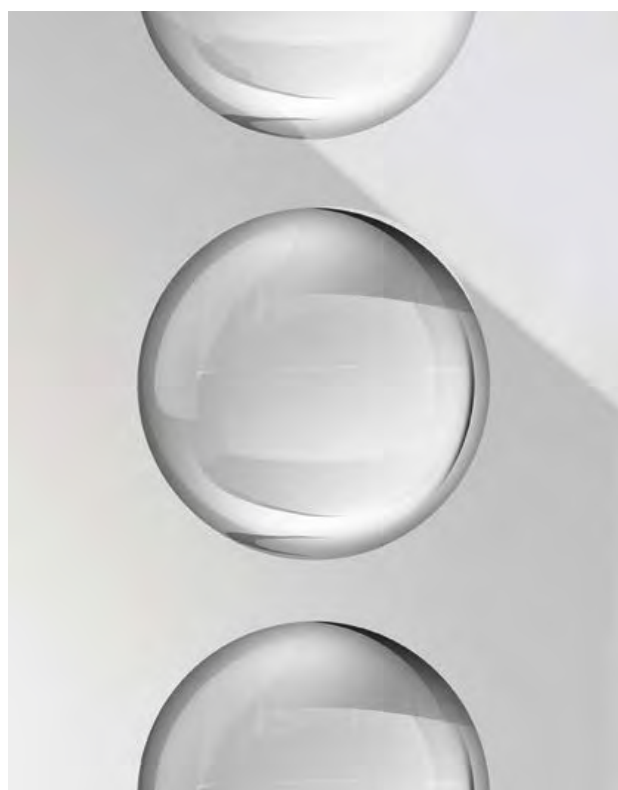
Gordio



Laurus



Oliva Francese



Bulle Fiamminga



Soft

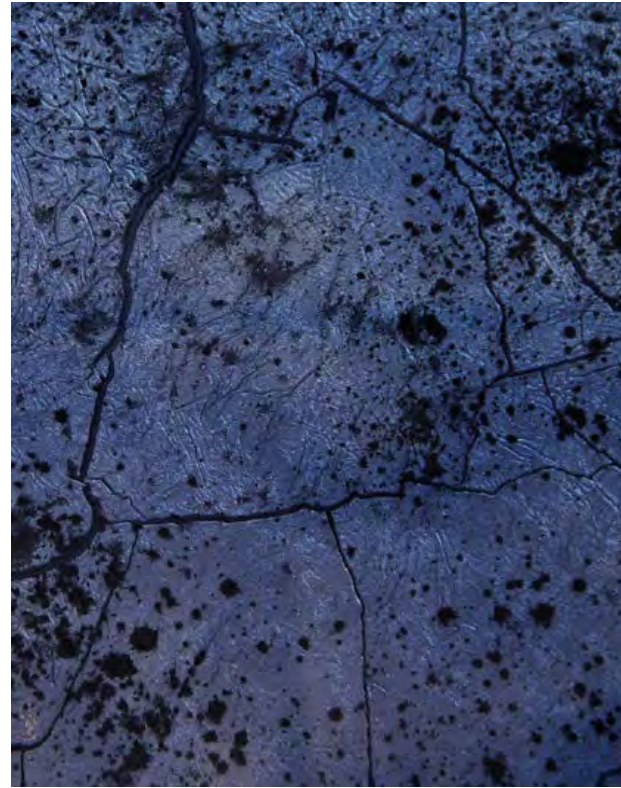


Mostrina

Contemporary selection /
Selezione Contemporanea



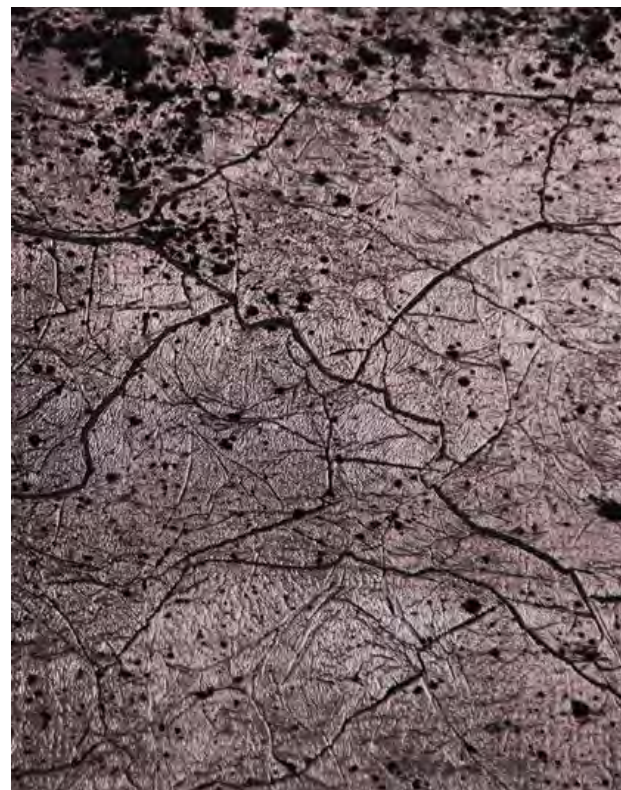
Barene Gold



Barene Blue



Barene Silver



Barene Violet

Classic selection /
Selezione Classica



Acanthus



Buranello



Bouquet



Scudo Veneziano



Convallaria



Cornucopia



Virtus



Bluma



Lucania



Sharazad



Vandelia



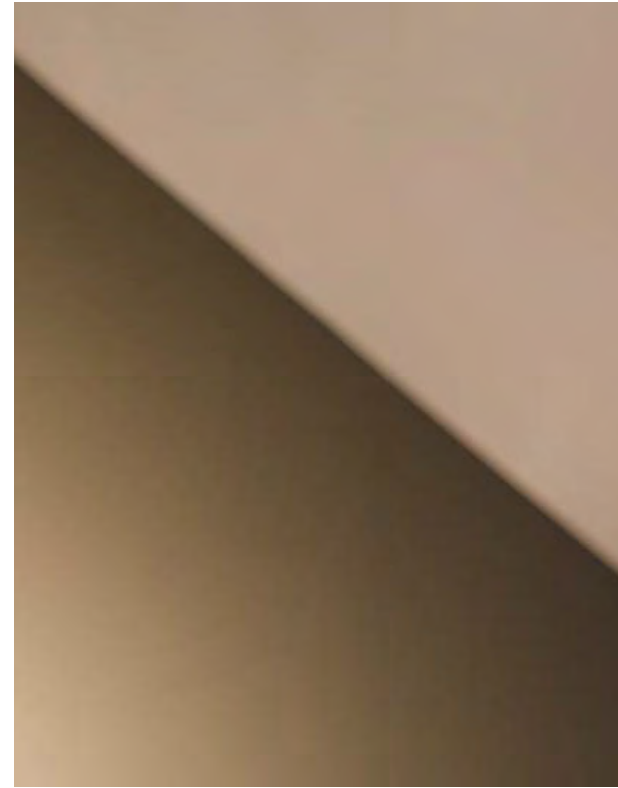
Clear Mirror



Light Antiqued Mirror



Medium Antiqued Mirror



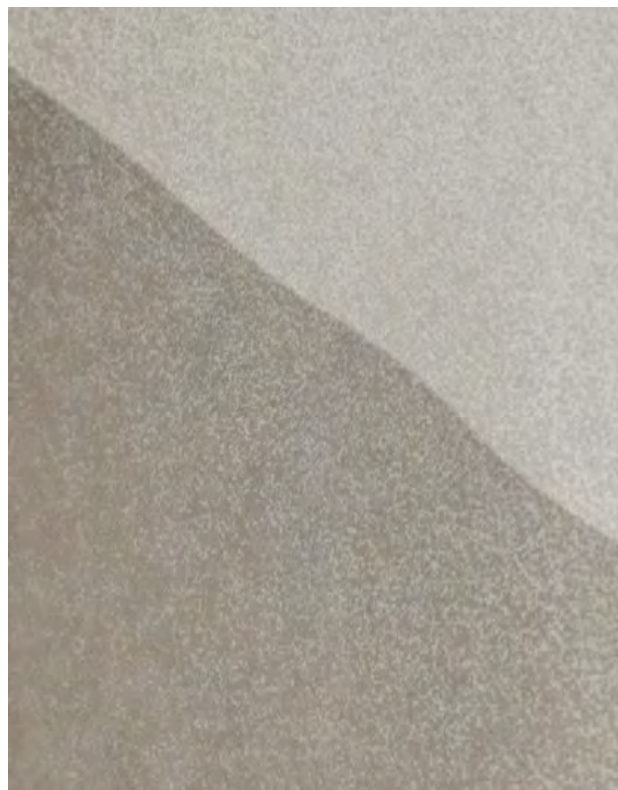
Bronze Mirror



Light Antiqued Bronze Mirror



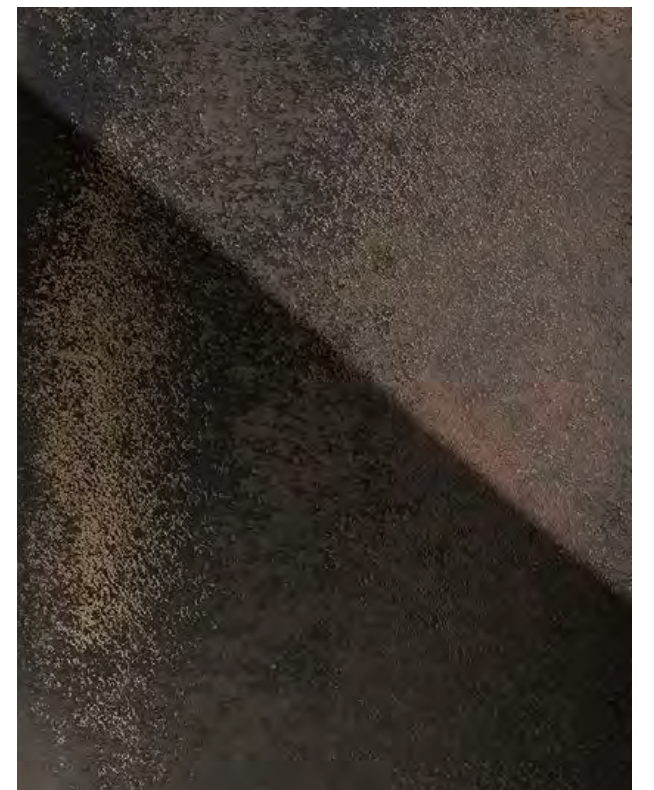
Heavy Antiqued Mirror



Handmade Light Antiqued Mirror



Medium Antiqued Bronze Mirror



Heavy Antiqued Bronze Mirror



ARTE VENEZIANA SRL
Via Cattaneo, 7
30030 Olmo di Martellago
Venezia, Italy

T. +39 041 908920
sales@arteveneziana.com
www.arteveneziana.com

Concept by
Arte Veneziana®

Renderings by **InTheMiddle**

Photos by **Studio Pointer**

pp. 43-45 **ROKA Robert Karasek**
pp. 60-61 **Simone Furiosi**
p. 117 **Kerimov Architects**

Printed in March 2026

© 2026 - All rights reserved



