



L'ORIGINE

Company Profile



"La bellezza delle cose esiste nella mente di chi le osserva."
La regola del gusto, David Hume.

"Beauty in things exists merely in the mind which contemplates them."
Of the Standard of Taste, David Hume.

L'ORIGINE

TAILOR - MADE ITALIAN ELEGANCE



L'Origine is a flexible and dynamic company founded in 1976, well-known and appreciated for its professionalism and reliability. Today, the company stands as an important partner in the **interior design** and in the interpretation of **International taste**. Its staff has always sought with determination the experimentation and the innovation, from the material selection to the processing techniques, from the study of the overall layout up to the proposal of highly exclusive finishes. Over the years, a growing group spirit and a strong internal motivation led the company to stand out in the industry for **combining ability** and competitiveness by increasing and developing a totally personal identity and experience both in terms of design and functional expression, typical of a genuine, refined and good taste in **Made in Italy Interiors**.

The production is structured both industrially, with woodworking technologies, and on a craftsman level, with versatile machinery and the use of precision techniques. Inside there are departments of carpentry and polishing supported also by specialized suppliers. The company is equipped to handle all product orders, but mainly **custom design** assignments and also **turnkey projects**. As a confirmation of the high quality and care of the production process, **the company receives in 2014 the logo 100% Made in Italy**. This reward refers to the Italian Law n.166 of 2009, which states in paragraph n.1 of Art .16: "It is understood as entirely manufactured in Italy the product or the goods classifiable as "Made in Italy" under the current legislation, and for which conceiving, design, manufacturing and packaging are made exclusively on the Italian territory."



MATERIALS

The selection of materials is carried out with scrupulous rigor and accuracy by experts. Only the best types of wood are carefully selected one by one, both in terms of perception and technical performance in order to guarantee the maximum **aesthetical and technical quality of the final** product that will be delivered to the customer. Meticulous tests are constantly run to check the physical properties of materials and the precision of executions. The **environmental sustainability** is a value to which the company gives the utmost attention during the decision-making process.

WOOD WORKING

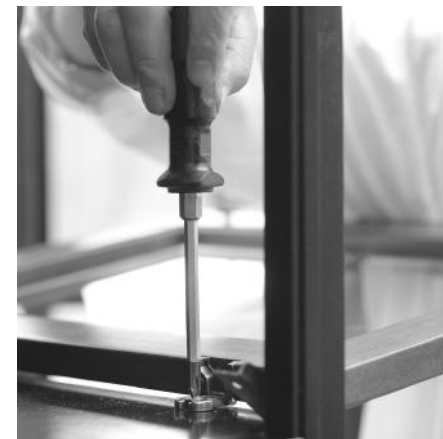
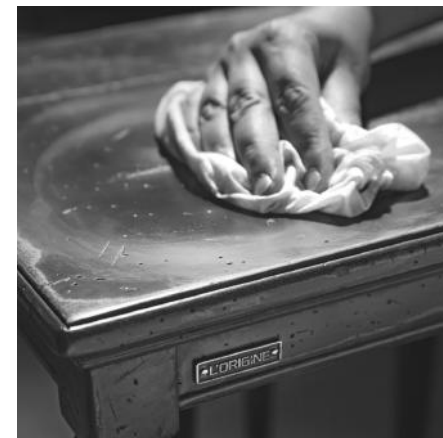
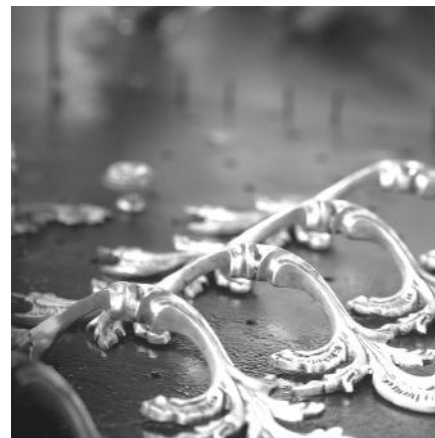
The respect of the natural drying times in order to ensure the dimensional stability of the wood, the **research of the perceptual uniformity** in color tones, naturally present in the material, the visual analysis and the **balance combination of grain designs** are considered fundamental and all-important during the working process. A particular attention is given also to the use of **non-toxic products** with low environmental impact.

FINISHES

The choice of **refined and exclusive colors** and the study of physical properties of finishing processes take place constantly under internal testing. Company is looking for the **best tactile perceptions** and the most **elegant color tones** through ongoing refinement in order to give the projects an **harmony of taste** totally unique. The **customization of finishes meets the taste of the customers**, adapting to specific needs if required. Nothing is left to chance.

TECHNOLOGY

Each project is also studied and discussed in terms of technology in a rational and innovative way. The **ergonomic study** of all components leads to constantly seek the best lighting, **visual and functional comfort** in all products. The latest technological systems are used in order to ensure the greater satisfaction in the day by day use. Particular care is placed in the aesthetic analysis of the technological components and to find the best value and the most successful integration between these and the products.



RESIDENTIAL



12
VILLA
LONDON

18
CHALET
ASPEN



24
PRIVATE HOUSE
ST. PETERSBURG



30
PENTHOUSE
SHANGHAI



36
ROOMERS
BADEN BADEN



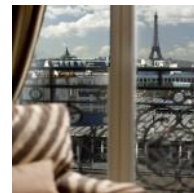
48
FANHAMS HALL
HERFORDSHIRE



42
LE 10 BIS
PARIS



56
HYATT
MADELEINE
PARIS



CONTRACT

HISTORICAL VILLA
LONDON







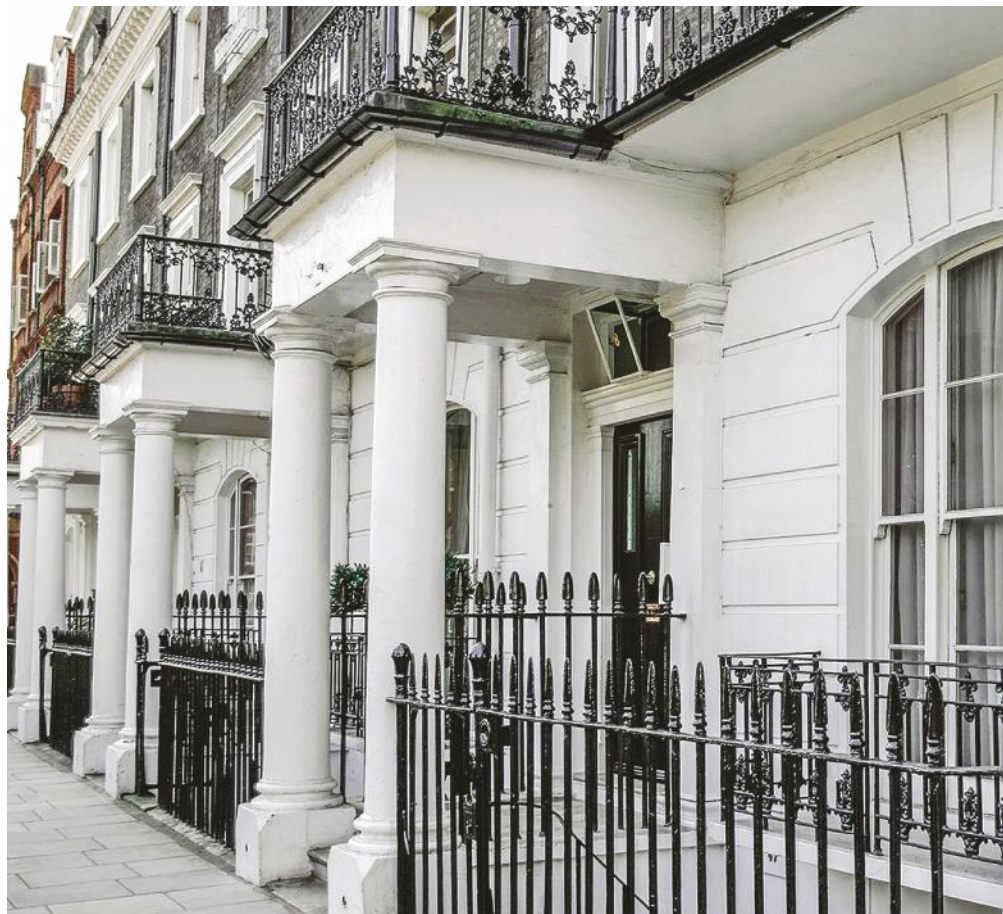
CHALET
ASPEN







PRIVATE HOUSE
ST. PETERSBURG







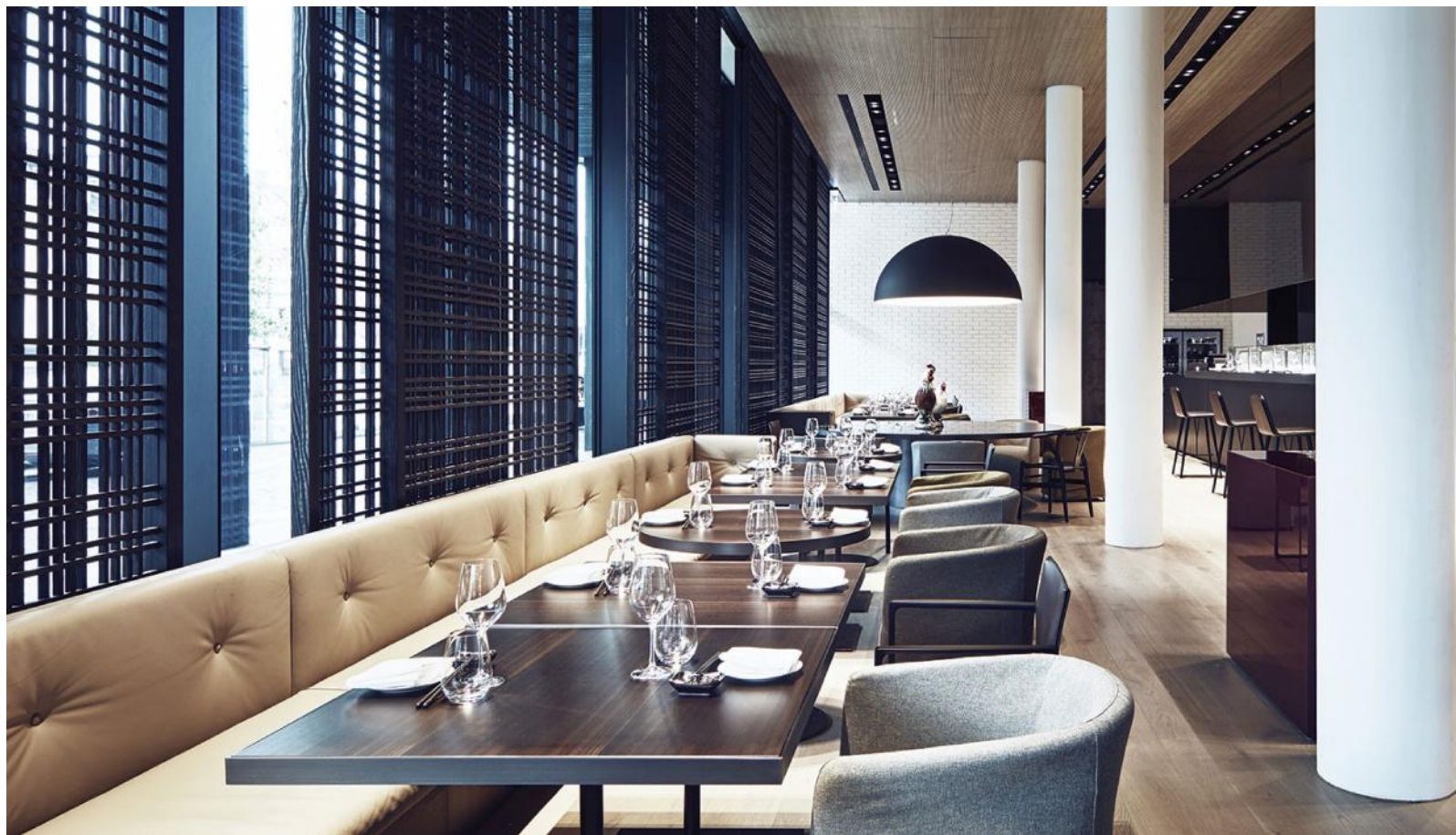
PENTHOUSE
SHANGHAI







ROOMERS HOTEL
BADEN BADEN

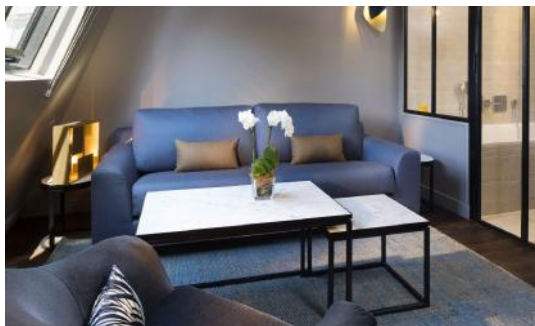






**HOTEL LE 10 BIS
PARIS**







**PENNYHILL PARK HOTEL
AND SPA
BAGSHO UK**









HYATT MADELEINE
HOTEL
PARIS









REFERENCES:

Roomers Baden Baden
Lange Str. 100
76530 Baden-Baden, Germany
www.roomers-badenbaden.com

Hyatt Paris Madeleine
24 Boulevard Malesherbes,
75008 Paris, France
www.parismadeleine.hyatthotels.hyatt.com

Le 10 BIS
10bis Rue du Débarcadère
75017 Paris, France
www.le10bishotel-paris.com

Pennyhill Park Hotel & The Spa
London Road, Bagshot, Surrey,
GU19 5EU, England, UK
www.pennyhillpark.co.uk

Maison Aimeé Vibert
2 Chome-2-1
Nihonbashimurumachi,
Chuo, Tokyo, Japan
www.aimeevibert.com

South Lodge Hotel
Brighton Road,
Nr. Horsham,
West Sussex, RH13 6PS
www.southlodgehotel.co.uk

Manor House Hotel and Golf Club
Castle Combe, Nr. Bath,
Wiltshire, SN14 7HR
www.manorhouse.co.uk

Villa Sofia Boutique Hotel
Lenin's Quay 31,
Crimea, Yalta
www.villa-sofia.com.ua

Hotel Palacio Garvey
Tornería, 24
Jerez de la Fra (Cádiz)
www.hotelpalaciogarvey.com

Fanhams Hall Hotel
Fanhams Hall Road Ware,
Hertfordshire SG12 7PZ
www.ehvenus.com



L'ORIGINE

Company Profile