

VEBLÉN

collection
2016



VEBLÉN

collection
2016





La storia di VEBLÉN nasce lontana nel tempo, una cultura di design partita dall'Italia, le cui radici, legate all'eleganza, al gusto per il bello, all'artigianalità, hanno influenzato il gusto dell'arredamento, stabilendo regole nuove ed entrando a far parte dell'immaginario del jet-set internazionale.

Con il cristallo, materiale tra i più antichi nella storia dell'uomo, da sempre sinonimo di agiatezza e stile per chi lo possiede, a partire dalle aristocratiche famiglie egizie ritratte nei geroglifici con i loro monili in vetro, FIAM Italia conquista le abitazioni più famose del mondo, diventando terreno fertile per le idee dei designer più prestigiosi e brand riconosciuto da un pubblico particolarmente attento e raffinato.

VEBLÉN parte dalla storia scritta dalla famiglia Livi sul vetro e cristallo, dal know how raggiunto sull'esclusività delle forme e si fa, ora, interprete del desiderio di chi voglia arricchire la propria dimora con arredi preziosi che comunichino eleganza con maggiore enfasi.

VEBLÉN trova sede nella prestigiosa cornice di Villa Miralfiore, dimora quattrocentesca, riportata all'antico splendore dalla famiglia Livi, dove tra stucchi, affreschi e decorazioni prende vita il fascino di VEBLÉN.

Proprio da questo luogo, ricco di cultura, arte e del buon vivere, nascono il simbolo ed il nome della VEBLÉN: l'ermellino, un animale emblema di aristocratica purezza e regalità, è stato scoperto durante il restauro della Villa; il nome è stato ispirato dalle misteriose leggende che la circondano.

Chi ne sceglie i prodotti, si appropria di frammenti di tradizioni e saperi senza tempo.



Villa Miralfiore Anni '50 - Foto archivio Miralfiore
Villa Miralfiore in the 1950s - Shots from Miralfiore archive

The history of VEBLÉN has origins far away in time, a design culture that was born in Italy, whose roots, connected to elegance, taste for beauty and craftsmanship, have influenced the taste for furniture, establishing new rules and becoming part of the idealistic international jet-set.

With crystal, one of the most ancient materials in human history which has always been synonym of wealth and style for the owner, starting from the aristocratic Egyptian families portrayed in hieroglyphs with their glass trinkets,

FIAM Italia has conquered the most famous homes of the world, becoming fertile ground for the ideas of the most prestigious designers and brands recognized by a particularly attentive and refined audience.

VEBLÉN has its starting point in the history written by the Livi family on glass and crystal, in the know-how gained on the exclusivity of shapes, and is now an interpreter of the desire of those who want to enrich their lives with precious furnishings that convey elegance with greater emphasis.

VEBLÉN is established in the prestigious setting of Villa Miralfiore, a fifteenth-century residence, restored to its former glory by the Livi family, where - among stuccos, frescos and decorations - the charm of Veblén comes to life.

It is from this place, full of culture, art and good living, that the symbol and name of Veblén originate: the ermine, an animal that symbolizes aristocratic purity and regality, was discovered during the restoration of the Villa; the name was inspired by the mysterious legends that surround it.

Those who choose its products, receive fragments of timeless traditions and knowledge.



Pasha

specchio - mirror

Specchio da parete costituito da cornice in vetro fuso a gran fuoco da 6 mm retroargentato con decoro a rilievo. Disponibile nelle finiture fumè o bronzo. Specchio piano da 5 mm disponibile nelle finiture neutro, fumè o bronzo. Telaio posteriore in metallo verniciato. Possibilità di appendamento in orizzontale o verticale.

Wall mirror consisting of a 6 mm fused glass frame back-silvered with relief decorations. Available in smoked or bronze finish. 5 mm flat mirror available in neutral, smoked or bronze finish. Rear frame made of painted metal. It can be hung horizontally or vertically.





Pasha
specchio - mirror

Dimensioni (cm) L. P. H.
Dimensions (cm) L. W. H.

ellittico / elliptical
221 x 5 x 82
87" x 2" x 32 5/16"



Pasha
specchio - mirror

Dimensioni (cm) L. P.H.
Dimensions (cm) L. W. H.

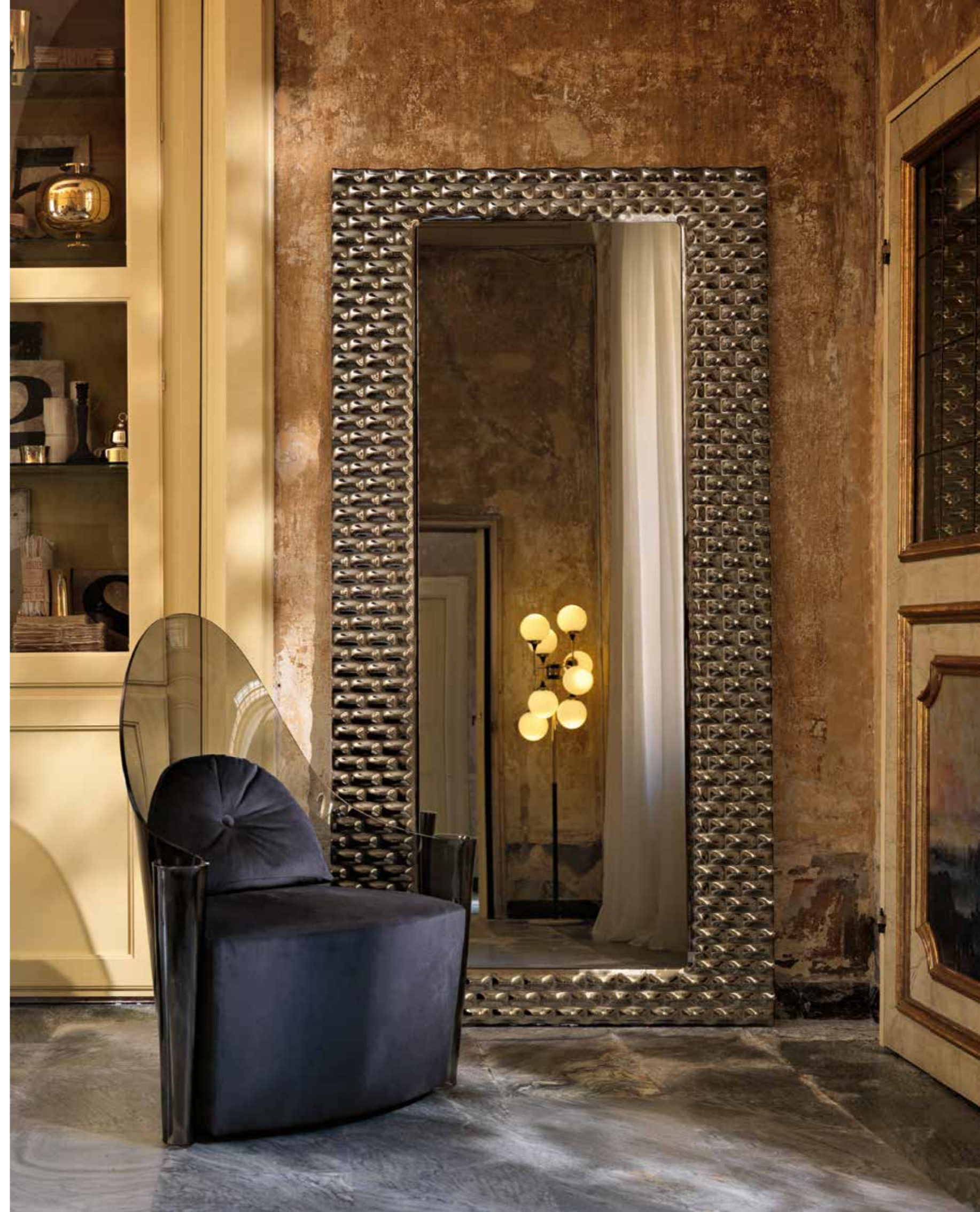
tondo / round
Ø 130 x 5
Ø 51 3/16" x 2"



Pasha
specchio - mirror

Dimensioni (cm) L. P. H.
Dimensions (cm) L. W. H.

rettangolare / rectangular
222 x 5 x 113
87 3/8 x 2" x 44 1/2"





Ponte Vecchio

specchio - mirror

Specchio da parete costituito da cornice in vetro fumè da 6 mm fuso a gran fuoco, sabbato e retroargentato. Specchio piano da 5 mm disponibile nelle finiture neutro o fumè. Telaio posteriore in metallo verniciato. Possibilità di appendimento in orizzontale o verticale.

Dimensioni (cm) L. P.H.
Dimensions (cm) L. W. H.

200 x 7 x 110
78 3/4" x 2 3/4" x 43 5/16"

Wall mirror consisting of 6 mm fused smoked glass, sanded and back-silvered. 5 mm flat mirror available in neutral or smoked finish. Rear frame made of painted metal. It can be hung horizontally or vertically.





Ponte Vecchio
specchio - mirror





Ponte Vecchio

specchio - mirror

Dimensioni (cm) L. P. H.
Dimensions (cm) L. W. H.

160 x 7 x 95
62" x 2 3/4" x 37 3/8"



Hermitage

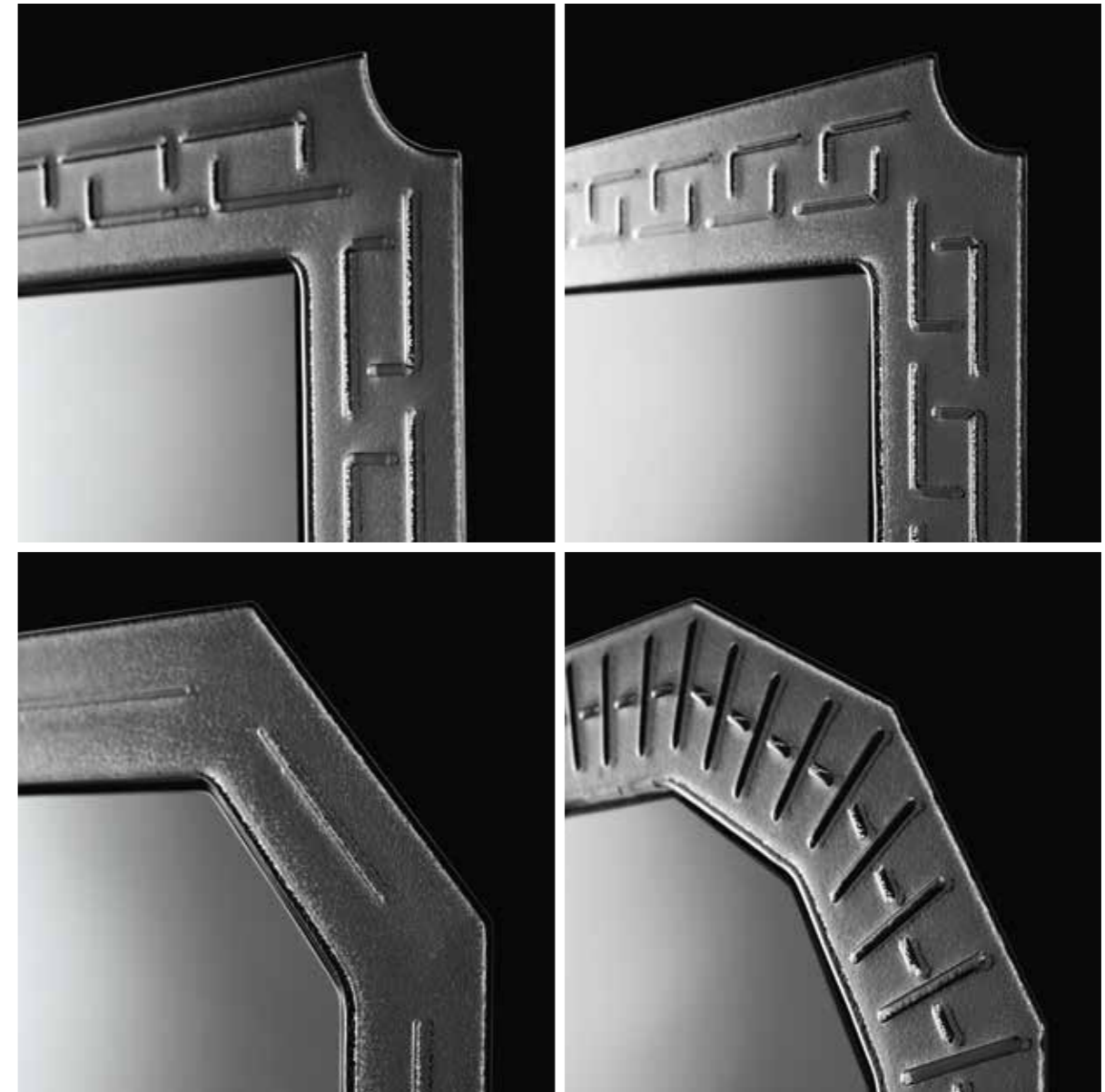
specchio - mirror

Specchio da parete costituito da cornice in vetro fumé o bronzo da 6 mm fuso a gran fuoco e retroargentato con decoro a rilievo; specchio piano fumé o bronzo da 5mm. Telaio posteriore in metallo.

Wall mirror consisting of a 6 mm fused smoked or bronze glass frame back-silvered with relief decorations; 5 mm smoked or bronze flat mirror. Rear frame made of metal.

Hermitage
specchio - mirror





Hermitage
specchio - mirror

Dimensioni (cm) L. P. H.
Dimensions (cm) L. W. H.

mod. A 61 x 2 x 41 24" x 13/16" x 16 1/8"	mod. B 59 x 2 x 59 23 1/4" x 13/16" x 23 1/4"	mod. C 61 x 2 x 41 24" x 13/16" x 16 1/8"	mod. D 51 x 2 x 51 20" x 13/16" x 20"
---	---	---	---



Louis
tavolo - table





Louis
tavolo - table

Tavolo composto da quattro gambe in vetro extralight fuso, finitura "Rosa Veblén" trasparente. Piano in legno laccato nero lucido, con aperture centrali coperte da elementi in vetro extralight da 8 mm fuso, finitura "Rosa Veblén".

Table consisting of four legs in extralight fused glass, transparent "Rosa Veblén" finish. Top in black gloss lacquered wood, with central openings covered by 8 mm extralight fused glass elements, "Rosa Veblén" finish.



Louis
tavolo - table

Dimensioni (cm) L. P. H.
Dimensions (cm) L. W. H.

rettangolare / rectangular
240 x 115 x 75
94 1/2" x 45 1/4" x 29 1/2"

quadrato / square
150 x 150 x 75
59" x 59" x 29 1/2"



Louis
tavolo - table





Louis
console

Console composta da due gambe
in vetro extralight fuso, finitura
"Rosa Veblén". Piano in legno
laccato nero lucido.

Console consisting of two legs
in extralight fused glass,
"Rosa Veblén" finish. Top in black
gloss lacquered wood.

Dimensioni (cm) L. P.H.
Dimensions (cm) L. W. H.

180 x 40 x 75
70 7/8" x 15 3/4" x 29 1/2"



Cocò
tavolo - table

Dimensioni (cm) L. P.H.
Dimensions (cm) L. W. H.

tondo / round
Ø 158 x 74
Ø 62 3/16" x 29 1/8"

rettangolare / ovale
rectangular / oval
360 x 120 x 74
141 3/4" x 47 1/4" x 29 1/8"



Cocò
tavolo - table







Lady B
mobile contenitore - container cabinet

Mobile contenitore composto da struttura, top e gambe in legno laccato nero lucido; ante e frontali in vetro Nero95 curvato. Profili delle ante in metallo verniciato nero opaco.

Container cabinet consisting of structure, top and legs in black gloss lacquered wood; doors and front in curved black Nero95 glass. Profiles of the doors in opaque black painted metal.



Lady B
mobile contenitore - container cabinet

Dimensioni (cm) L. P.H.
Dimensions (cm) L. W. H.
200 x 53 x 75
78 3/4" x 20 7/8" x 29 1/2"



Notre Dame

vetrina - showcase

Vetrina in vetro curvato da 6 mm con due ripiani fissi in vetro da 8 mm. Top e base in legno di frassino verniciato nero a poro aperto. Profili in legno verniciato nero a poro aperto. Anta con serratura. Corpo vetrina e ripiani disponibili in vetro fumè o bronzo. Corpo vetrina disponibile in vetro liscio o inciso. Corpo illuminante (optional) posizionabile anche sotto il top.

Showcase in 6 mm curved glass with two fixed 8 mm glass shelves. Top and base made of open pore ash wood painted black. Profiles made of open pore wood painted black. Door with lock. Structure and shelves available in smoked or bronze glass. Showcase structure available in smooth or engraved glass. The optional lights can also be placed under the top.





Notre Dame

vitrina - showcase

Dimensioni (cm) L. P.H.
Dimensions (cm) L. W. H.

140 x 50 x 130
55 1/8" x 19 11/16" x 51 3/16"





Vetro fumè fuso retroargentato
Fused back-silvered smoked glass



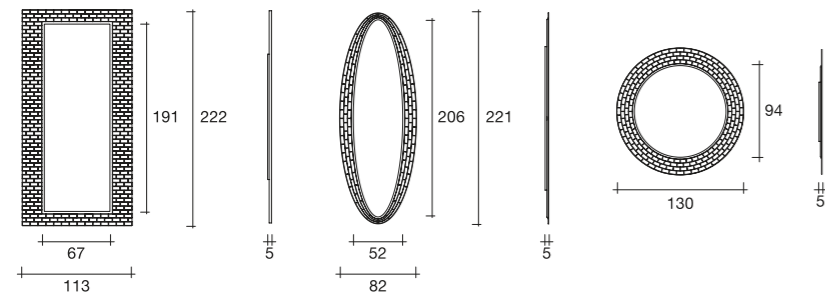
Vetro bronzo fuso retroargentato
Fused back-silvered bronze glass



Vetro fumè sabbato retroargentato
Sanded and back-silvered smoked glass



Pasha



Specchio da parete costituito da cornice in vetro fuso a gran fuoco da 6 mm retroargentato con decoro a rilievo. Disponibile nelle finiture fumè o bronzo. Specchio piano da 5mm disponibile nelle finiture neutro, fumè o bronzo. Telaio posteriore in metallo verniciato. Possibilità di appendimento in orizzontale o verticale.

Wall mirror consisting of a 6 mm fused glass frame back-silvered in relief decorations. Available with smoked or bronze finish. 5 mm flat mirror available in neutral, smoked or bronze finish. Rear frame made of painted metal. It can be hung horizontally or vertically.

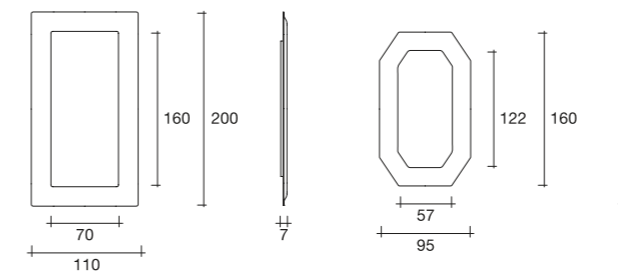
Dimensioni (cm) L. P.H.
Dimensions (cm) L. W. H.

rettangolare / rectangular
222 x 5 x 113
87 3/8" x 2" x 44 1/2"

ellittico / elliptical
221 x 5 x 82
87" x 2" x 32 5/16"

tondo / round
Ø 130 x 5
Ø 51 3/16" x 2"

Ponte Vecchio



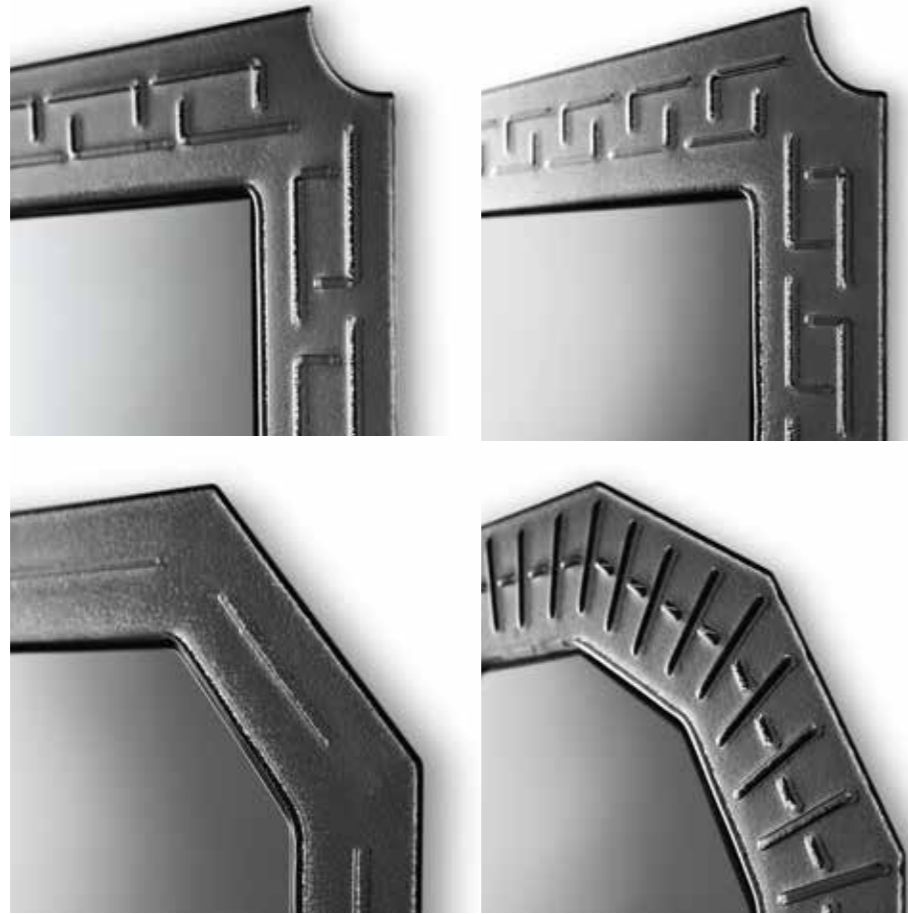
Specchio da parete costituito da cornice in vetro fumè da 6 mm fuso a gran fuoco, sabbato e retroargentato. Specchio piano da 5 mm disponibile nelle finiture neutro o fumè. Telaio posteriore in metallo verniciato. Possibilità di appendimento in orizzontale o verticale.

Wall mirror consisting of 6 mm fused smoked glass, sanded and back-silvered. 5 mm flat mirror available in neutral or smoked finish. Rear frame made of painted metal. It can be hung horizontally or vertically.

Dimensioni (cm) L. P.H.
Dimensions (cm) L. W. H.

rettangolare / rectangular
200 x 7 x 110
78 3/4" x 2 3/4" x 43 5/16"

ottagonale / octagonal
160 x 7 x 95
62" x 2 3/4" x 37 3/8"



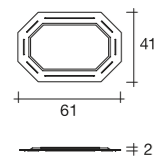
Vetro fumè fuso retroargentato, con decori a rilievo
Fused back-silvered smoked glass, with relief decorations

Vetro bronzo fuso retroargentato con decori a rilievo
Fused back-silvered bronze glass, with relief decorations

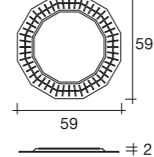


Hermitage

mod. A



mod. B



Specchio da parete costituito da cornice in vetro fumé o bronzo da 6 mm fuso a gran fuoco e retroargentato con decoro a rilievo; specchio piano fumé o bronzo da 5mm. Telaio posteriore in metallo.

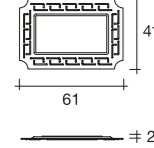
Wall mirror consisting of a 6 mm fused smoked or bronze glass frame back-silvered with relief decorations; 5 mm smoked or bronze flat mirror. Rear frame made of metal.

Dimensioni (cm) L. P. H.
Dimensions (cm) L. W. H.

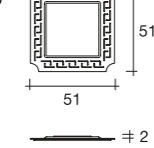
mod. A
61 x 2 x 41
24" x 13/16" x 16 1/8"

mod. C
61 x 2 x 41
24" x 13/16" x 16 1/8"

mod. C



mod. D

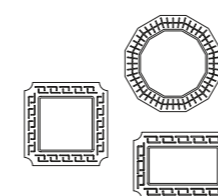


mod. B
59 x 2 x 59
23 1/4" x 13/16" x 23 1/4"

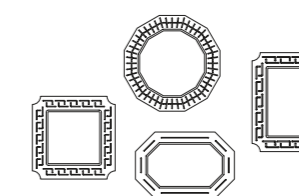
mod. D
51 x 2 x 51
20" x 13/16" x 20"

Hermitage composizioni / compositions

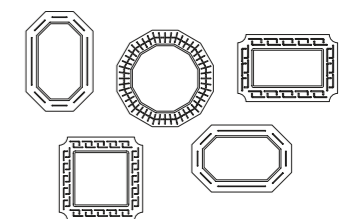
comp. 3.1



comp. 4.1

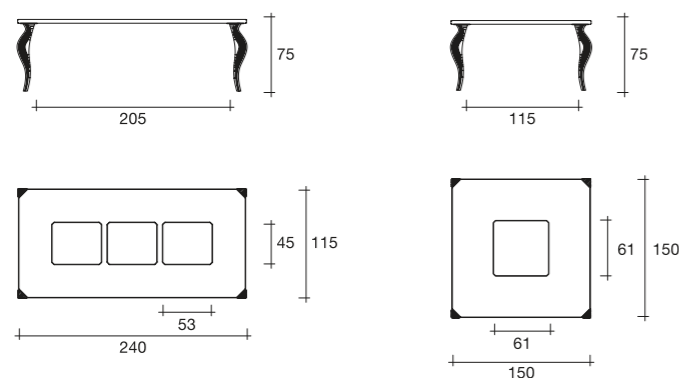


comp. 5.1





Louis



Tavolo composto da quattro gambe in vetro extralight fuso, finitura "Rosa Veblén" trasparente. Piano in legno laccato nero lucido, con aperture centrali coperte da elementi in vetro extralight da 8 mm fuso, finitura "Rosa Veblén".

Table consisting of four legs in extralight fused glass, transparent "Rosa Veblén" finish. Top in black gloss lacquered wood, with central openings covered by 8 mm extralight fused glass elements, "Rosa Veblén" finish.

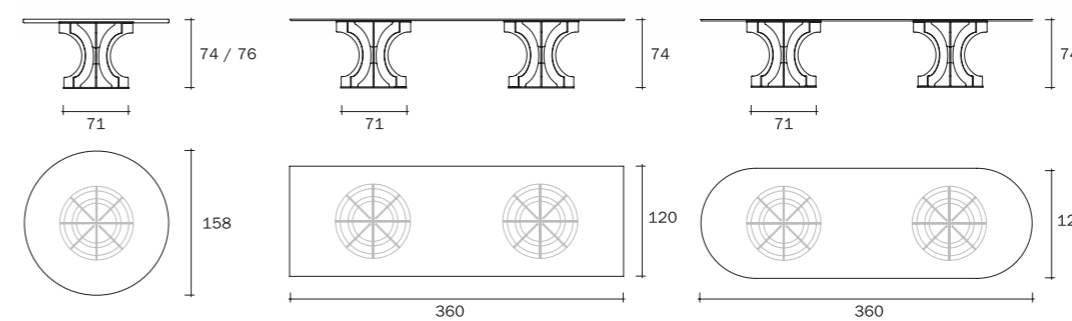
Dimensioni (cm) L. P. H.
Dimensions (cm) L. W. H.

rettangolare / rectangular
240 x 115 x 75
94 1/2" x 45 1/4" x 29 1/2"

quadrato / square
150 x 150 x 75
59" x 59" x 29 1/2"



Cocò



Tavolo con piano in vetro fumè o in legno impiallacciato frassino verniciato nero a poro aperto. Base composta da elementi in vetro fumè da 12 mm temperato, sagomati e disposti a raggiera.

Table with top in smoked glass or in open pore, black painted wood veneered ash. Base made of 12 mm tempered smoked glass, shaped and arranged in spokes.

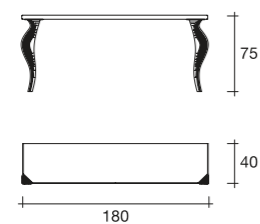
Dimensioni (cm) L. P. H.
Dimensions (cm) L. W. H.

tondo / round
Ø 158 x 74
Ø 62 3/16" x 29 1/8"

rettangolare / rectangular
ovale / oval
360 x 120 x 74
141 3/4" x 47 1/4" x 29 1/8"



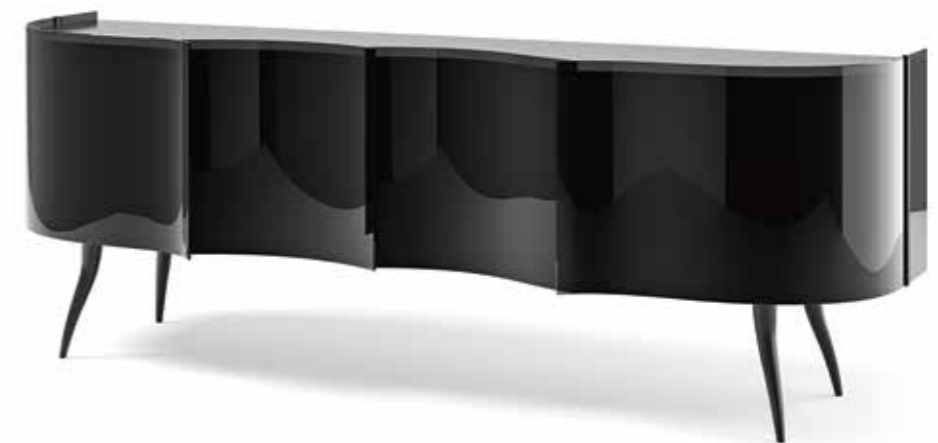
Louise console



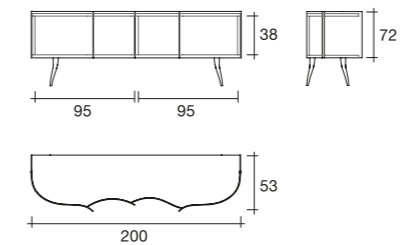
Consolle composta da due gambe in vetro extralight fuso, finitura "Rosa Veblén". Piano in legno laccato nero lucido.

Console consisting of two legs in extralight fused glass, "Rosa Veblén" finish. Top in black gloss lacquered wood.

Dimensioni (cm) L. P. H.
Dimensions (cm) L. W. H.
180 x 40 x 75
70 7/8" x 15 3/4" x 29 1/2"



Lady B



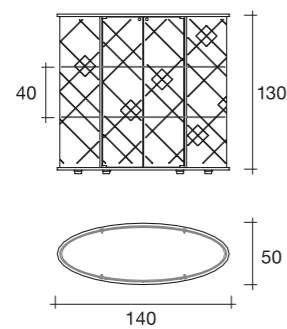
Mobile contenitore composto da struttura, top e gambe in legno laccato nero lucido; ante e frontali in vetro Nero95 curvato. Profili delle ante in metallo verniciato nero opaco.

Container cabinet consisting of structure, top and legs in black gloss lacquered wood; doors and front in curved black Nero95 glass. Profiles of the doors in opaque black painted metal.

Dimensioni (cm) L. P. H.
Dimensions (cm) L. W. H.
200 x 53 x 75
78 3/4" x 20 7/8" x 29 1/2"



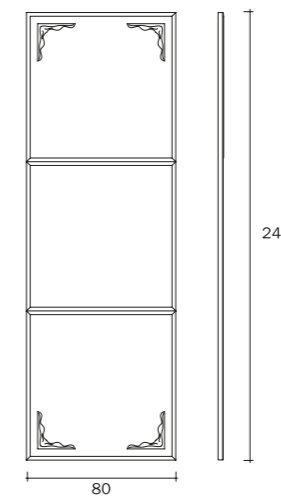
Notre Dame



Vetrina in vetro curvato da 6 mm con due ripiani fissi in vetro da 8 mm. Top e base in legno di frassino verniciato nero a poro aperto. Profili in legno verniciato nero a poro aperto. Anta con serratura. Corpo vetrina e ripiani disponibili in vetro fumè o bronzo. Corpo vetrina disponibile in vetro liscio o inciso. Corpo illuminante (optional) posizionabile anche sotto il top.

Dimensioni (cm) L. P.H.
Dimensions (cm) L. W. H.
140 x 50 x 130
55 1/8" x 19 11/16" x 51 3/16"

Showcase in 6 mm curved glass with two fixed 8 mm glass shelves. Top and base made of open pore ash wood painted black. Profiles made of open pore wood painted black. Door with lock. Structure and shelves available in smoked or bronze glass. Showcase structure available in smooth or engraved glass. The optional lights can also be placed under the top.



Versailles

Boiserie composta da 3 moduli quadrati a specchio in vetro fumè o bronzo da 5 mm molato, arricchiti da fregi angolari in resina. Struttura in fibra di legno ed alluminio.

Dimensioni (cm) L. P.H.
Dimensions (cm) L. W. H.
80 x 3 x 240
31 1/2" x 1 13/16" x 94 1/2"

Panelling consisting of 3 square mirror modules made of 5 mm bevelled smoked or bronze glass, decorated with angular resin decorations. Structure made of wood fibre and aluminium.

Composizione di tre
Composition of three
240 x 3 x 240
94 1/2" x 1 13/16" x 94 1/2"



Tessuti / Fabrics

Viggo CS - Velluto / Velvet



2_Perla
Pearl

4_Tortora
Dove-Grey

6_Fango
Mud

22_Nero
Black

23_Smoke
Smoke

Honey Moon - Velluto / Velvet



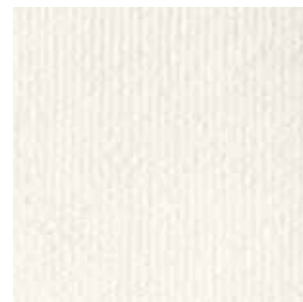
1_Gesso
Chalk

11_Marmotta
Marmot

17_Polvere
Dust

19_Grigio
Grey

130_Tortora
Dove-Grey



200_Bianco
White



205_Fumo
Smoke

Si precisa che le tonalità dei colori qui riprodotti potrebbero non corrispondere fedelmente a quelle reali, per motivi dipendenti dai limiti connessi alle tecniche di stampa su carta. Per una reale valutazione, fare riferimento al campionario finiture. Please note that the colour shades reproduced here may not correspond exactly to the actual shade due to the limits in printing on paper. For a true evaluation, refer to the finish samples.

Pelli / Leathers

Nubuk - Nabuk / Nabuk



2114_Testa di moro
Brown

2115_Tortora
Dove-Grey

2116_Castagna
Chestnut

2117_Fumo
Smoke

2118_Sabbia
Sand

Zaffiro - Pelle / Leather



1112_Smoke
Smoke

1135_Grigio perla
Pearl grey

1141_Nero
Black

1181_Sabbia
Sand

1187_Testa di moro
Brown



1634_Ghiaccio
Ice



1660_Fango
Mud

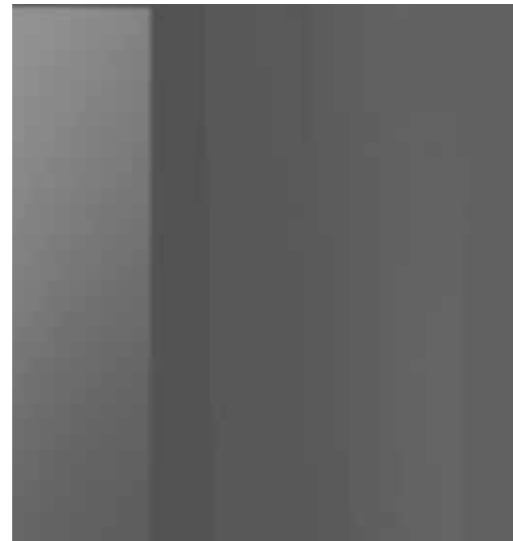
Si precisa che le tonalità dei colori qui riprodotti potrebbero non corrispondere fedelmente a quelle reali, per motivi dipendenti dai limiti connessi alle tecniche di stampa su carta. Per una reale valutazione, fare riferimento al campionario finiture. Please note that the colour shades reproduced here may not correspond exactly to the actual shade due to the limits in printing on paper. For a true evaluation, refer to the finish samples.



Vetri / Glass



Vetro fumè
Smoked glass



Vetro fumè retroargentato
Back-silvered smoked glass



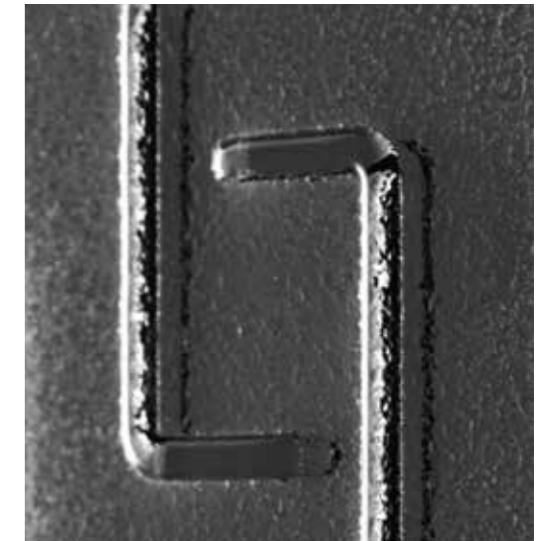
Vetro fumè sabbiato retroargentato
Sanded and back-silvered smoked glass



Vetro fumè fuso retroargentato
Fused back-silvered smoked glass



Vetro Nero 95 fuso
Fused Black 95 glass



Vetro fumè fuso retroargentato, con decori a rilievo
Fused back-silvered smoked glass, with relief decorations



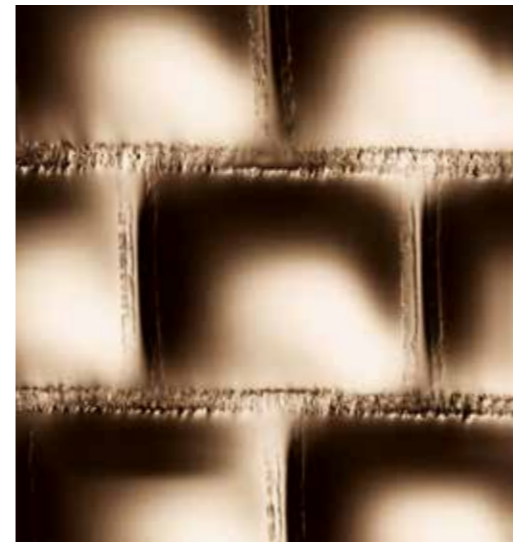
Vetro extralight smaltato a gran fuoco "Rosa Veblén"
Fused extralight glass, "Rosa Veblén" finish



Vetro bronzo
Bronze glass



Vetro bronzo retroargentato
Back-silvered bronze glass



Vetro bronzo fuso retroargentato
Fused back-silvered bronze glass



Frassino verniciato nero a poro aperto
Ash wood black open pore laquered

Legno / Wood

Si precisa che le tonalità dei colori qui riprodotti potrebbero non corrispondere fedelmente a quelle reali, per motivi dipendenti dai limiti connessi alle tecniche di stampa su carta. Per una reale valutazione, fare riferimento al campionario finiture. Please note that the colour shades reproduced here may not correspond exactly to the actual shade due to the limits in printing on paper. For a true evaluation, refer to the finish samples.

Si precisa che le tonalità dei colori qui riprodotti potrebbero non corrispondere fedelmente a quelle reali, per motivi dipendenti dai limiti connessi alle tecniche di stampa su carta. Per una reale valutazione, fare riferimento al campionario finiture. Please note that the colour shades reproduced here may not correspond exactly to the actual shade due to the limits in printing on paper. For a true evaluation, refer to the finish samples.

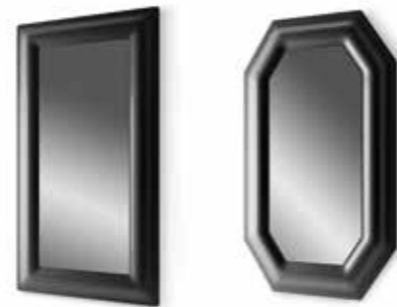


Sommario / Summary

Specchi
Mirrors



Lasha _ 2-9

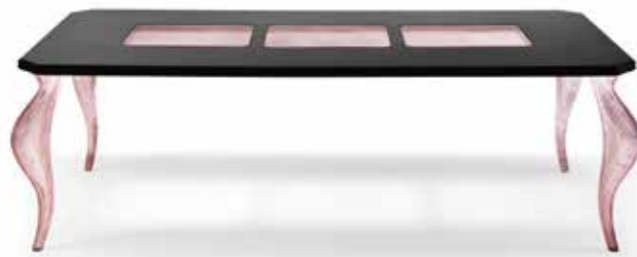


Ponte Vecchio _ 10-15



Hermitage _ 16-21

Tavoli
Tables



Louise _ 22-29



Cocò _ 30-33

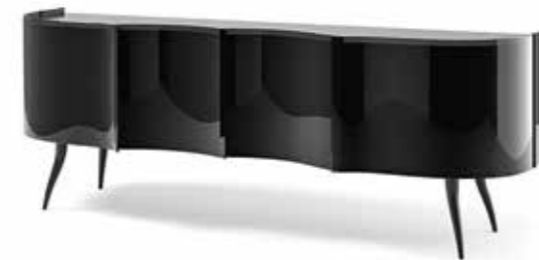


Consolle
Console



Louise _ 34-35

Mobili
contenitori
Container
cabinets



Lady B _ 36-41

Vetrine
Showcases



Notre Dame _ 42-45

Boiserie
Boiserie



Versailles _ 36-37

art direction
Marzia e Leo Dainelli

graphic design and layout
Acanto Comunicazione

photography and postproduction
Studio Leon

rendering images
Acanto Comunicazione

coordination and logistics
Daniele Livi

selections
Olimpia visual plan

print and packaging
Grapho 5

credits
INCIPIT
STILNOVO
MM LAMPADARI
SAMBONET
REBHIRT
BAXTER

September 2016



Villa Miralfiore: particolare dal Salone delle feste,
medaglione con l'impresa dell'ermellino.

Villa Miralfiore: detail of Ballroom,
shield with the ermine deed.



Luxury Edition by Fiam Italia

Fiam Italia - Via Ancona 1/b - 61010 Tavullia (PU), Italia
Tel. 0039 0721 20051 - Fax: 0039 0721 202432

www.veblen.eu info@veblen.eu facebook.com/Veblén



Luxury Edition by Fiam Italia

www.veblen.eu